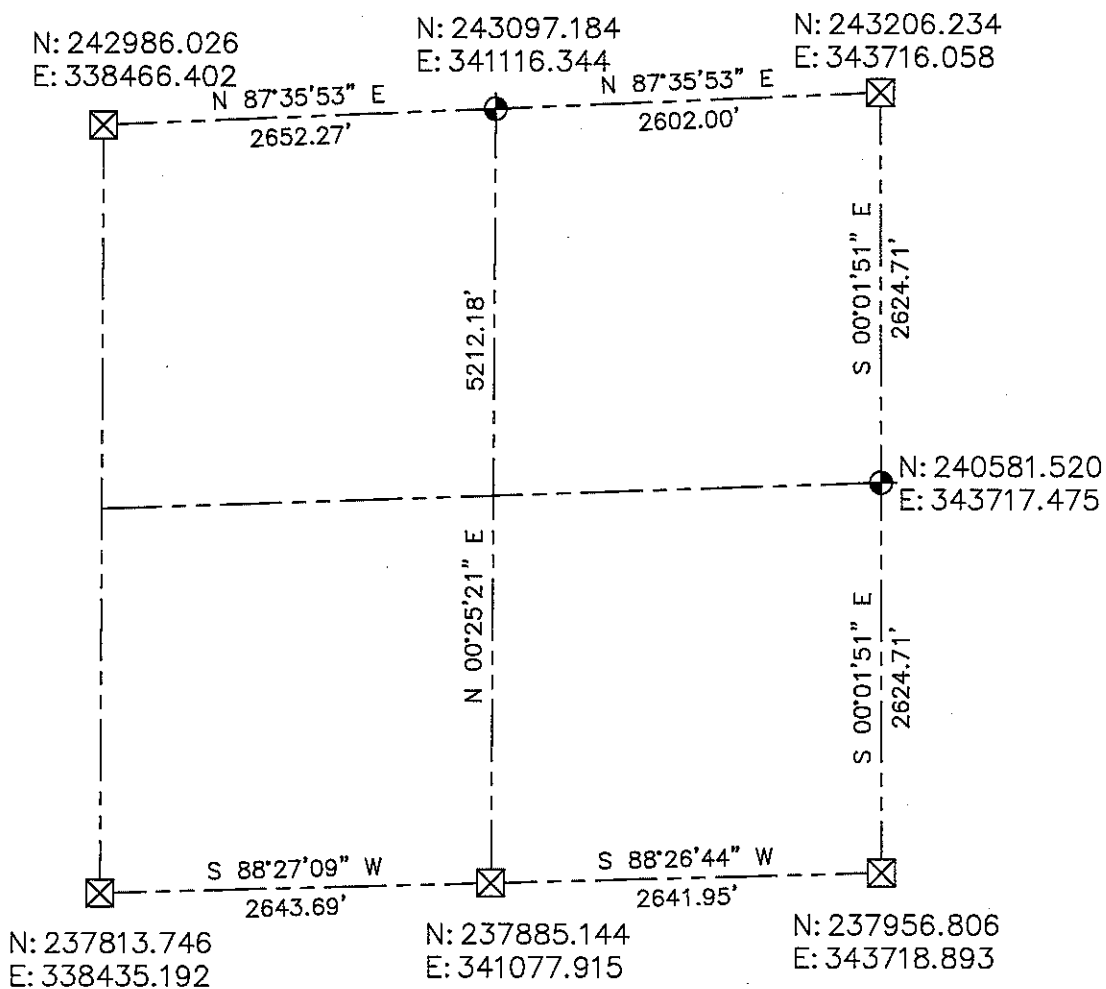


**LINCOLN COUNTY SECTION SUMMARY
SECTION 20
TOWNSHIP 35 NORTH RANGE 5 EAST
TOWN OF WILSON**



BEARINGS AND COORDINATES ARE BASED ON THE LINCOLN COUNTY COORDINATE SYSTEM

CERTIFIED CORRECT:



DARREN B. KRZANOWSKI RLS 2663
 REGISTERED LAND SURVEYOR
 DATED THIS 10TH DAY OF APRIL 2012

LEGEND

- ⊠ = 6in. X 6in. GRANITE STONE
- ⊙ = LINCOLN CO. CAST BERNTSEN ALUMINUM MONUMENT

RECEIVED BY LINCOLN COUNTY
 SURVEYOR THIS 15TH DAY
 OF June 20 12
Tom Walsh
 COUNTY SURVEYOR

CENTRAL STAKING INC
 2523 POST ROAD
 STEVENS POINT, WI 54481
 OFFICE 715-345-6904 FAX 715-345-7728