



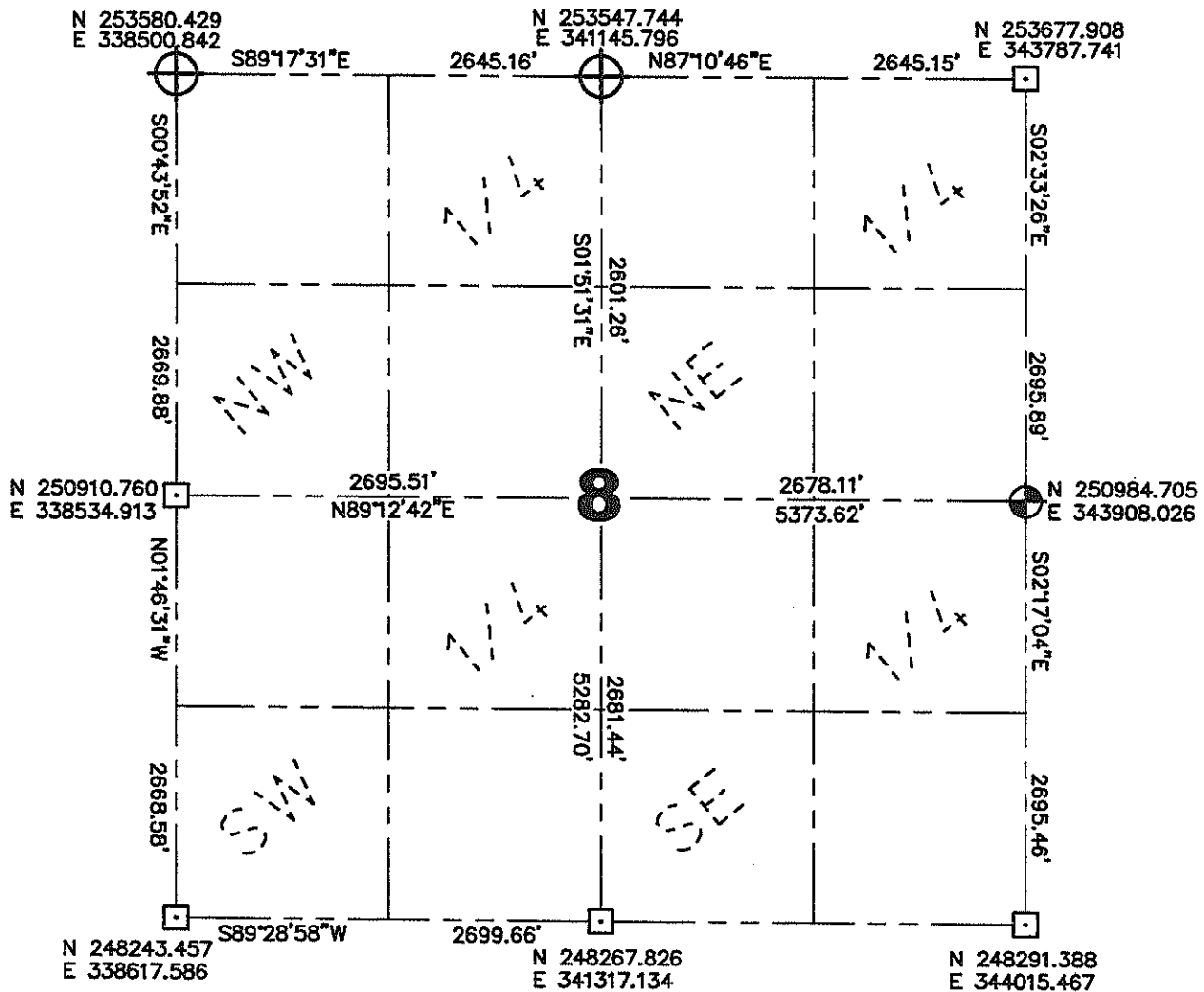


LINCOLN COUNTY SECTION SUMMARY

Legend

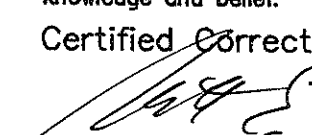
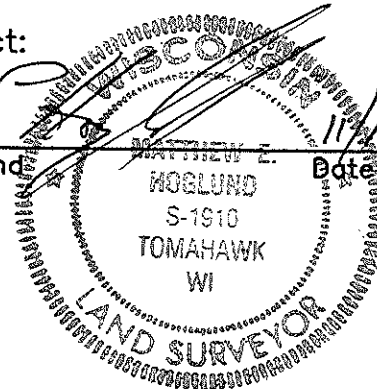
-  Set 7/8" x 30" Iron Rebar Weighing 2.04 lbs/lin ft.
-  Set Lincoln County Berntsen Monument
-  Found Lincoln County Berntsen Monument
-  Found 6" by 6" Granite Stone

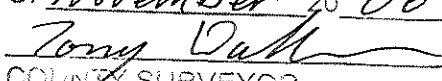
8 — **35N** — **5E**
 Section Township Range
Wilson
 Town



Coordinates and bearings are referenced to the Lincoln County Coordinate System as developed by the Wisconsin Department of Transportation and were determined by GPS observations on control points as supplied by Lincoln County Land Information Office or by manual survey methods, to the best of my knowledge and belief.

Certified Correct:


 Matthew E. Hoglund
 Date: 11/10/2008


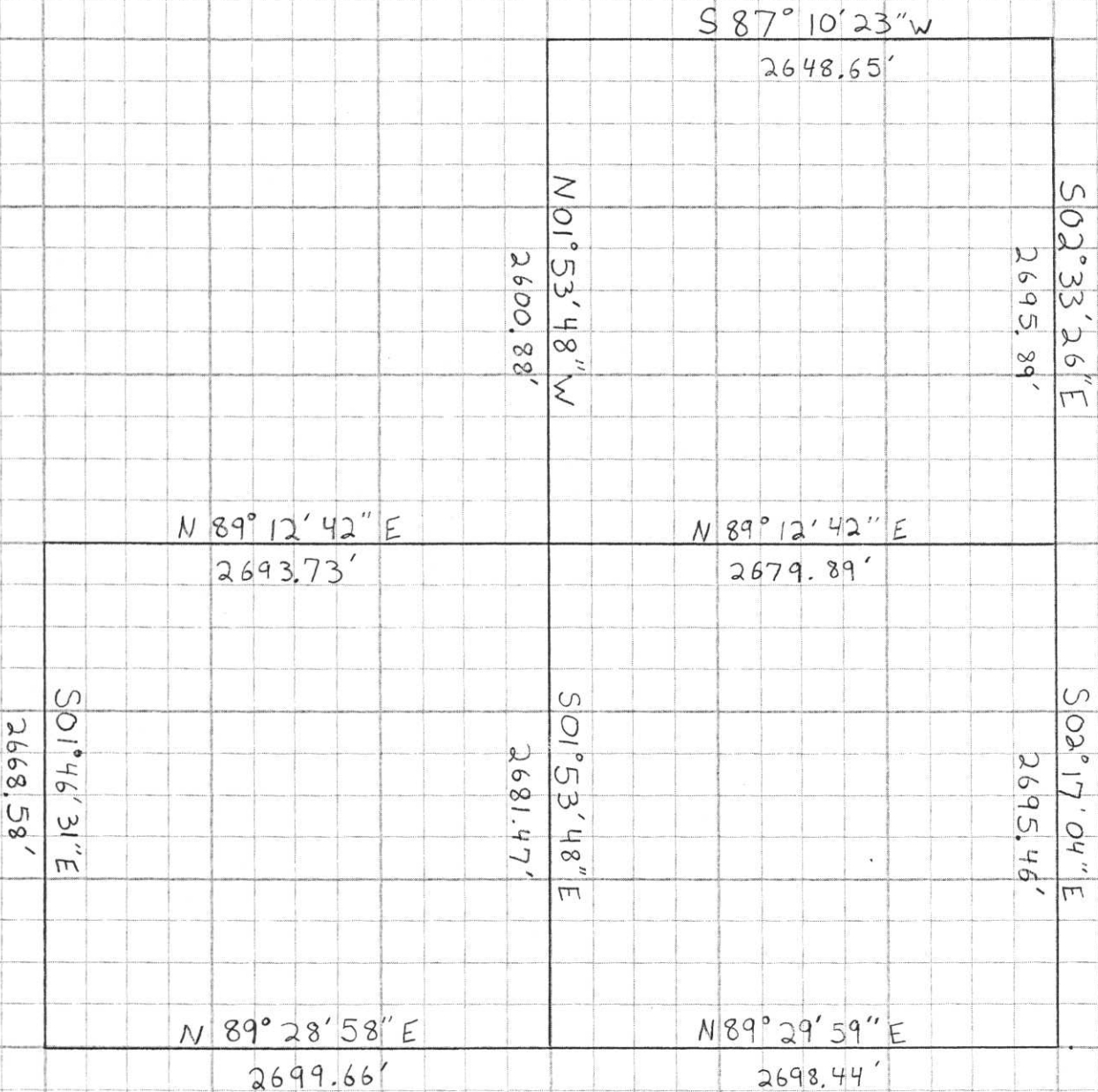
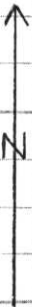
RECEIVED BY LINCOLN COUNTY
 SURVEYOR THIS 10TH DAY
 OF November 20 08

 COUNTY SURVEYOR

Sec. 8



SECTION 8 T. 35N. - R5E.

NOT TO
SCALE



RECEIVED AT LINCOLN COUNTY
COURTHOUSE THIS 25TH DAY
OF October 20 01
Tom Dahn
LAND INFORMATION OFFICE

E, I - 59