





# LINCOLN COUNTY SECTION SUMMARY

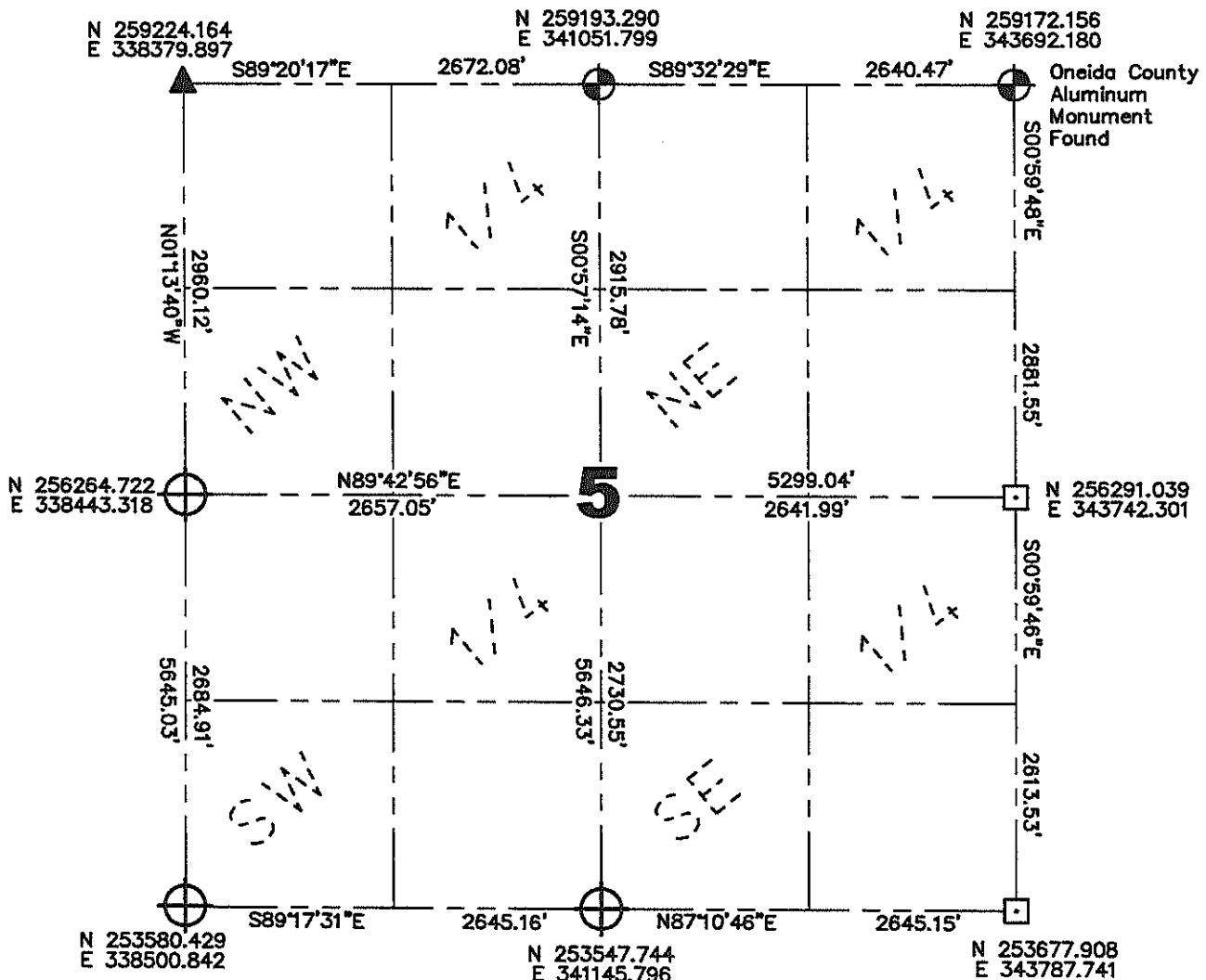
## Legend

-  Found P.K. Nail
-  Set Lincoln County Berntsen Monument
-  Found Lincoln County Berntsen Monument (unless otherwise noted)
-  Found 6" by 6" Granite Stone

**5** — **35N** — **5E**  
 Section Township Range  
**Wilson**  
 Town



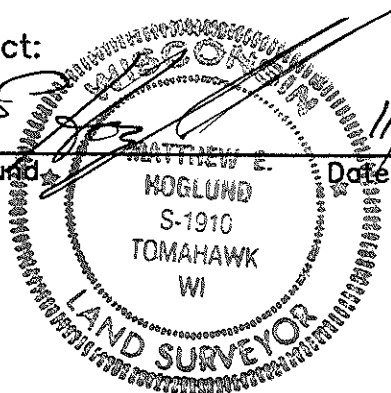
Proj. 766



Coordinates and bearings are referenced to the Lincoln County Coordinate System as developed by the Wisconsin Department of Transportation and were determined by GPS observations on control points as supplied by Lincoln County Land Information Office or by manual survey methods, to the best of my knowledge and belief.

Certified Correct:

Matthew E. Heglund

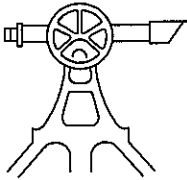


Date

11/10/2008

RECEIVED BY LINCOLN COUNTY SURVEYOR THIS 10<sup>TH</sup> DAY OF November 20 08  
*Tony Dahl*  
 COUNTY SURVEYOR

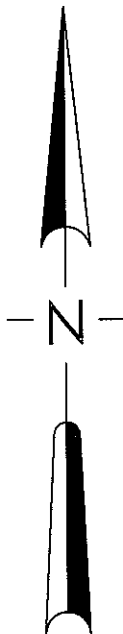
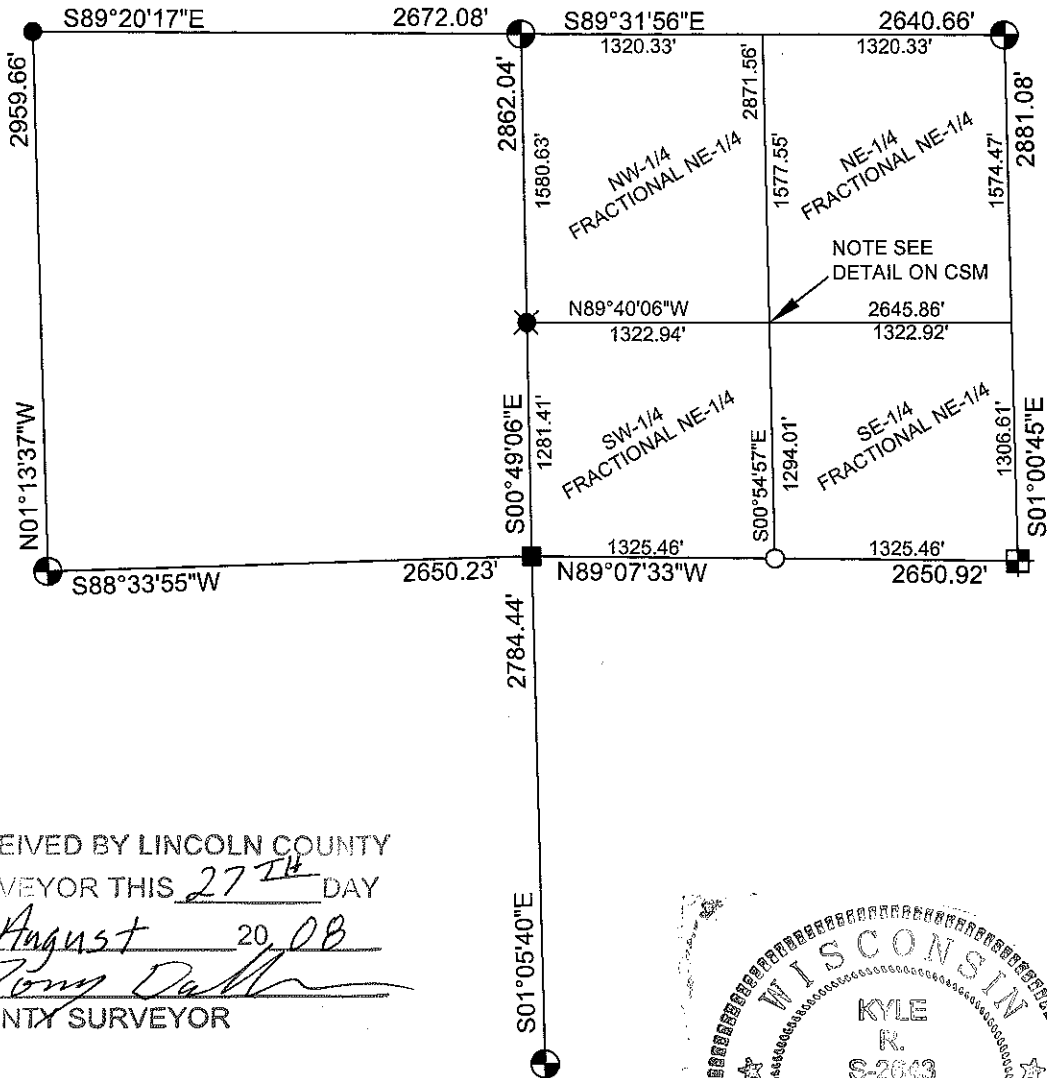
Sec. 5



# Lincoln County

## SECTION SUMMARY

5	35N	5E
Section	Township	Range
WILSON		
Town		



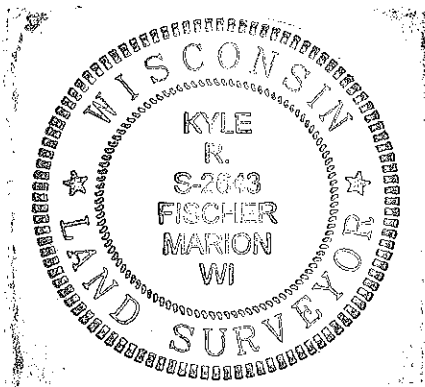
RECEIVED BY LINCOLN COUNTY  
 SURVEYOR THIS 27<sup>TH</sup> DAY  
 OF August 2008  
*Tony Dalko*  
 COUNTY SURVEYOR

NOTE:  
 BEARINGS ARE ASSUMED AND REFERENCE TO THE WEST LINE  
 OF THE FRACTIONAL NORTHEAST 1/4 ASSUMED TO BEAR  
 SOUTH 00°49'06" EAST.

SEAL

### LEGEND

- ⊕ - BERNSTEN MONUMENT
- - FOUND MAG NAIL
- ⊞ - FOUND GRANITE STONE
- - SURVEY MARKING PIN SET
- ⊗ - FOUND 1" O.D. IRON PIPE
- - 3/4" x 24" REBAR WEIGHING 2.05 LBS/LIN. FT. SET



CERTIFIED CORRECT:  
*Kyle R. Fischer*  
 Registered Land Surveyor  
 DATE: August 26<sup>TH</sup>, 2008

Sec. 5



**BECHER-HOPPE ASSOCIATES INC.**

ENGINEERS ARCHITECTS SCIENTISTS

330 Fourth Street • P.O. Box 8000 • Wausau, WI 54402-8000  
Tel 715-845-8000 • Fax 715-845-8008 • www.bhassoc.com

Project CTH 'CC' ROAD ALIGNMENT SURVEY

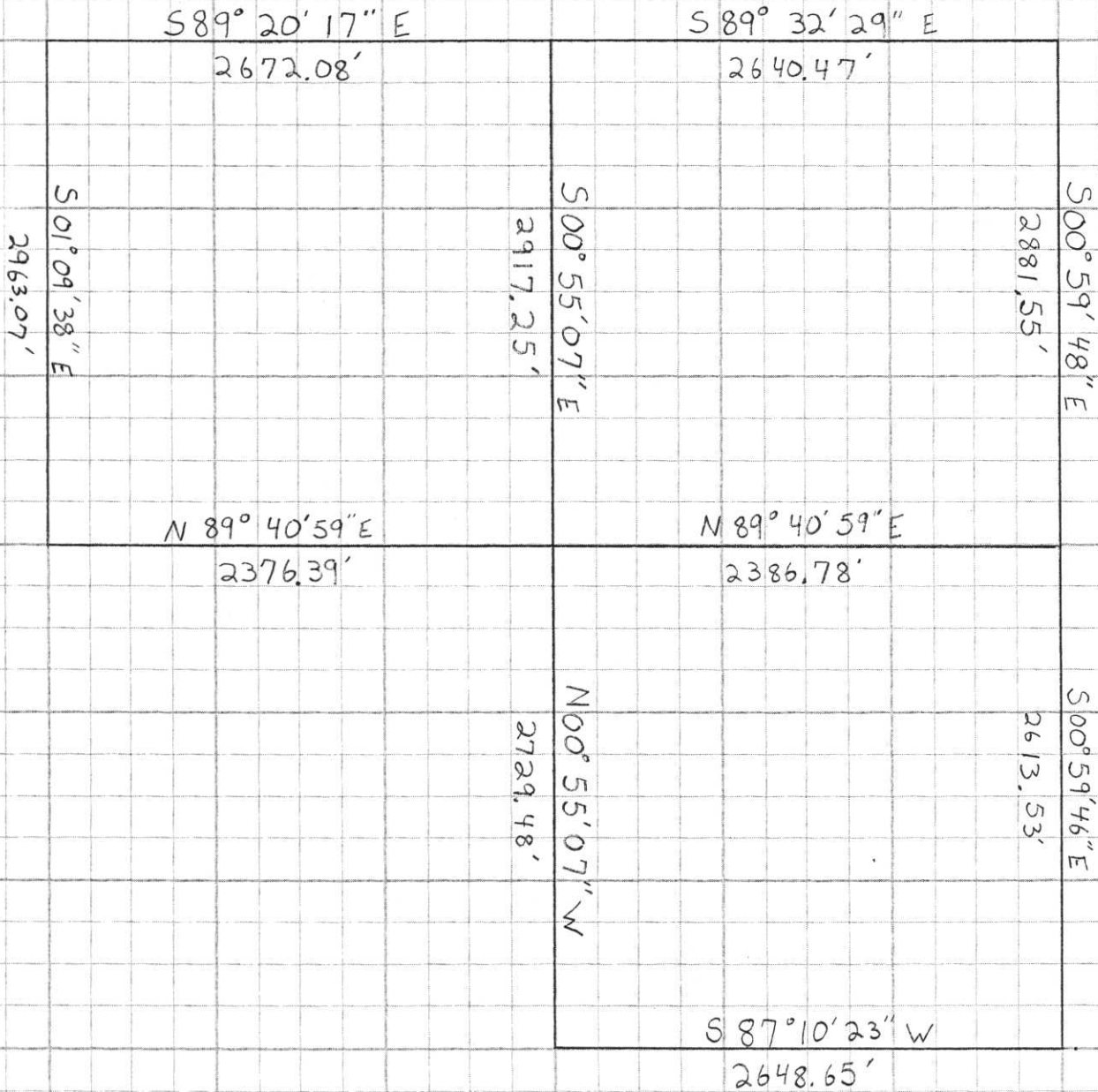
SECTION SUMMARY Job No. 99033

Date 9-11-01 By AJP

Page 1 of 3

NOT TO  
SCALE

SECTION 5 T. 35N. - R. 5E.



RECEIVED AT LINCOLN COUNTY  
 COURTHOUSE THIS 25<sup>TH</sup> DAY  
 OF October, 2001  
Tommy Dethlefsen  
 LAND INFORMATION OFFICE

A, E - 59