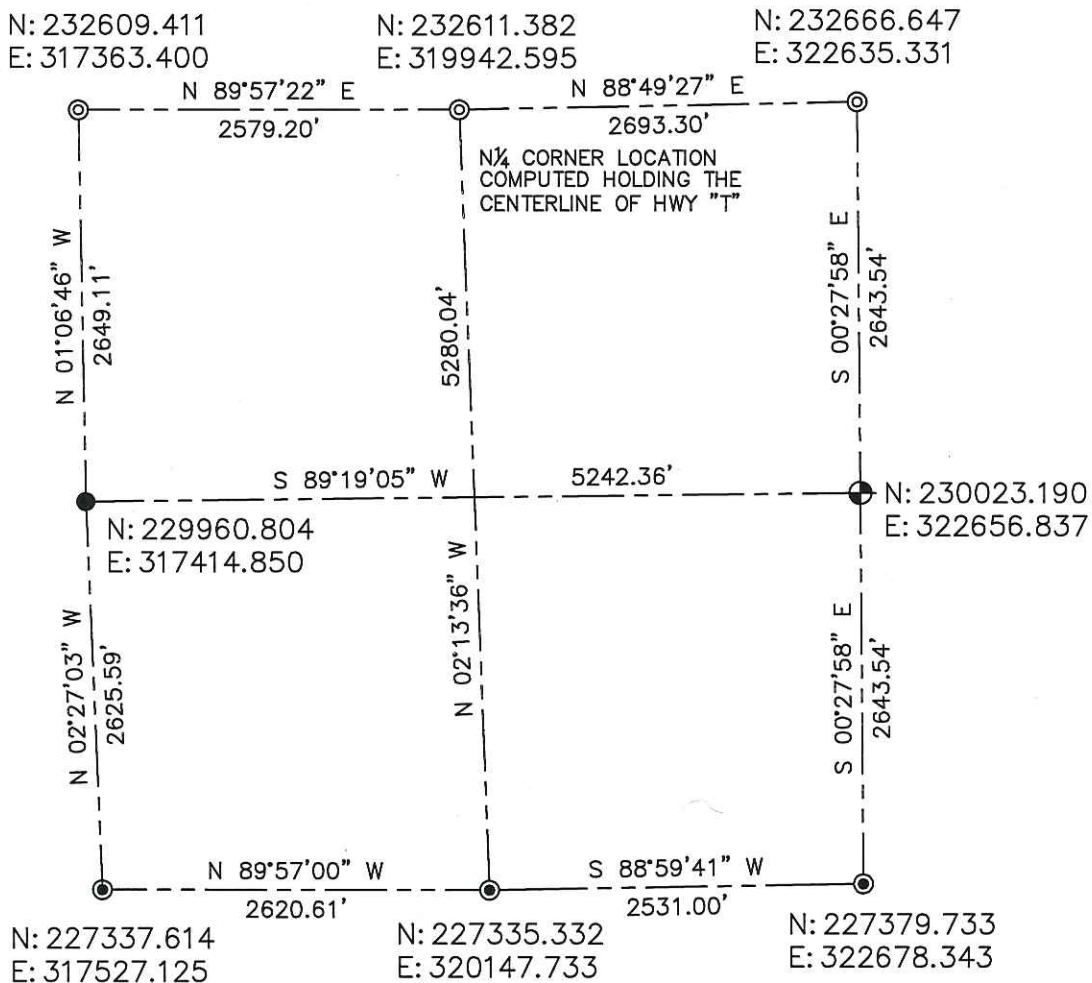


**LINCOLN COUNTY SECTION SUMMARY
SECTION 34
TOWNSHIP 35 NORTH RANGE 4 EAST
TOWN OF SOMO**



BEARINGS AND COORDINATES ARE BASED ON THE LINCOLN COUNTY COORDINATE SYSTEM

RECEIVED BY LINCOLN COUNTY
SURVEYOR THIS 17TH DAY
OF December 20, 12
Tom Dull
COUNTY SURVEYOR

CERTIFIED CORRECT:



Darren B. Krzanowski
DARREN B. KRZANOWSKI RLS 2663
REGISTERED LAND SURVEYOR
DATED THIS 12TH DAY OF DECEMBER 2012

LEGEND

- ⊕ = LINCOLN COUNTY CAST ALUMINUM MONUMENT
- = Found
- ⊙ = COMPUTED POINT
- ⦿ = COORDINATES BY OTHERS
- = 5' LINCOLN COUNTY DRIVE-ABLE MONUMENT SET

CENTRAL STAKING INC
2523 POST ROAD
STEVENS POINT, WI 54481
OFFICE 715-345-6904 FAX 715-345-7728