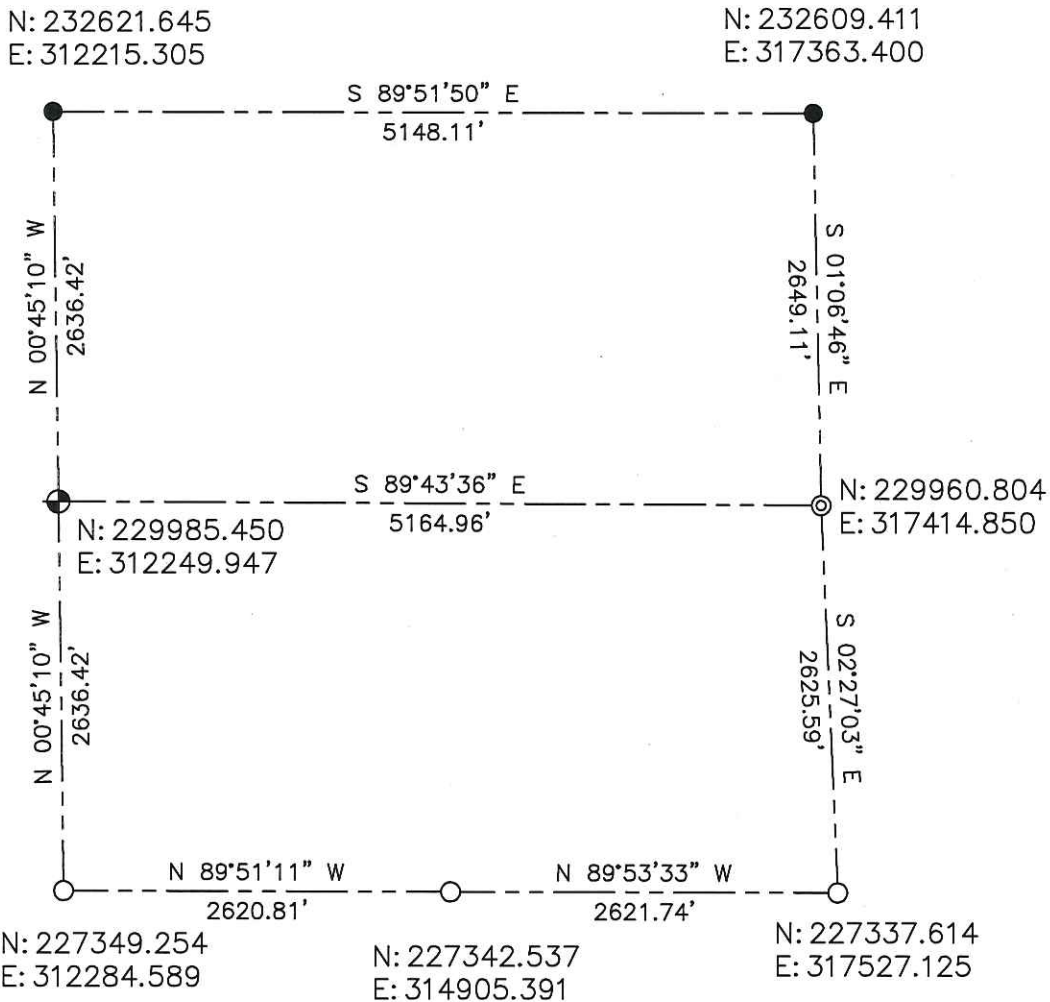


**LINCOLN COUNTY SECTION SUMMARY  
SECTION 33  
TOWNSHIP 35 NORTH RANGE 4 EAST  
TOWN OF SOMO**



BEARINGS AND COORDINATES ARE BASED ON THE LINCOLN COUNTY COORDINATE SYSTEM

**LEGEND**

- ⊕ = LINCOLN CO. CAST ALUMINUM MONUMENT
- = COMPUTED POINT
- = COORDINATES BY OTHERS
- ⊙ = 5' LINCOLN CO. ALUMINUM DRIVE-ABLE MONUMENT

CERTIFIED CORRECT:



*Darren B. Krzanowski*  
 DARREN B. KRZANOWSKI RLS 2663  
 REGISTERED LAND SURVEYOR  
 DATED THIS 14TH DAY OF DECEMBER, 2012

RECEIVED BY LINCOLN COUNTY  
 SURVEYOR THIS 17<sup>TH</sup> DAY  
 OF December, 20 12  
*Tom Dalko*  
 COUNTY SURVEYOR

**CENTRAL STAKING INC**  
 2523 POST ROAD  
 STEVENS POINT, WI 54481  
 OFFICE 715-345-6904 FAX 715-345-7728

**Sec. 33**