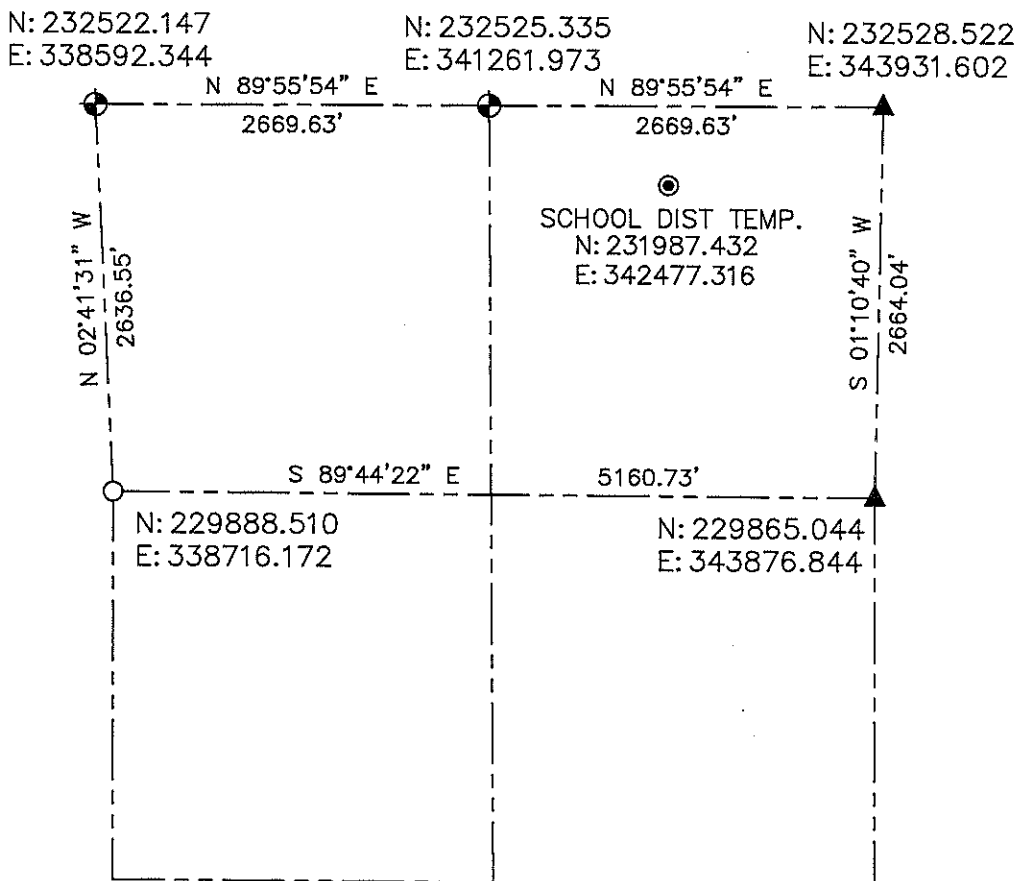



**LINCOLN COUNTY SECTION SUMMARY  
SECTION 32  
TOWNSHIP 35 NORTH RANGE 5 EAST  
TOWN OF WILSON**



BEARINGS AND COORDINATES ARE BASED ON THE LINCOLN COUNTY COORDINATE SYSTEM

CERTIFIED CORRECT:

  
 DARREN B. KRZANOWSKI RLS 2663  
 REGISTERED LAND SURVEYOR  
 DATED THIS 8TH DAY OF FEBRUARY, 2012

**LEGEND**

- ⊕ = LINCOLN CO. ALUMINUM CAST MONUMENT SET
- = 1 1/4in. OD IRON PIPE
- ⊙ = REBAR WITH ALUMINUM CAP
- ▲ = LOCATION PER COUNTY SURVEY RECORDS

RECEIVED BY LINCOLN COUNTY SURVEYOR THIS 10<sup>TH</sup> DAY

OF February 2012

  
 COUNTY SURVEYOR  
 SHEET 1 OF 1

**CENTRAL STAKING INC**  
 2523 POST ROAD  
 STEVENS POINT, WI 54481  
 OFFICE 715-345-6904 FAX 715-345-7728

Sec-32