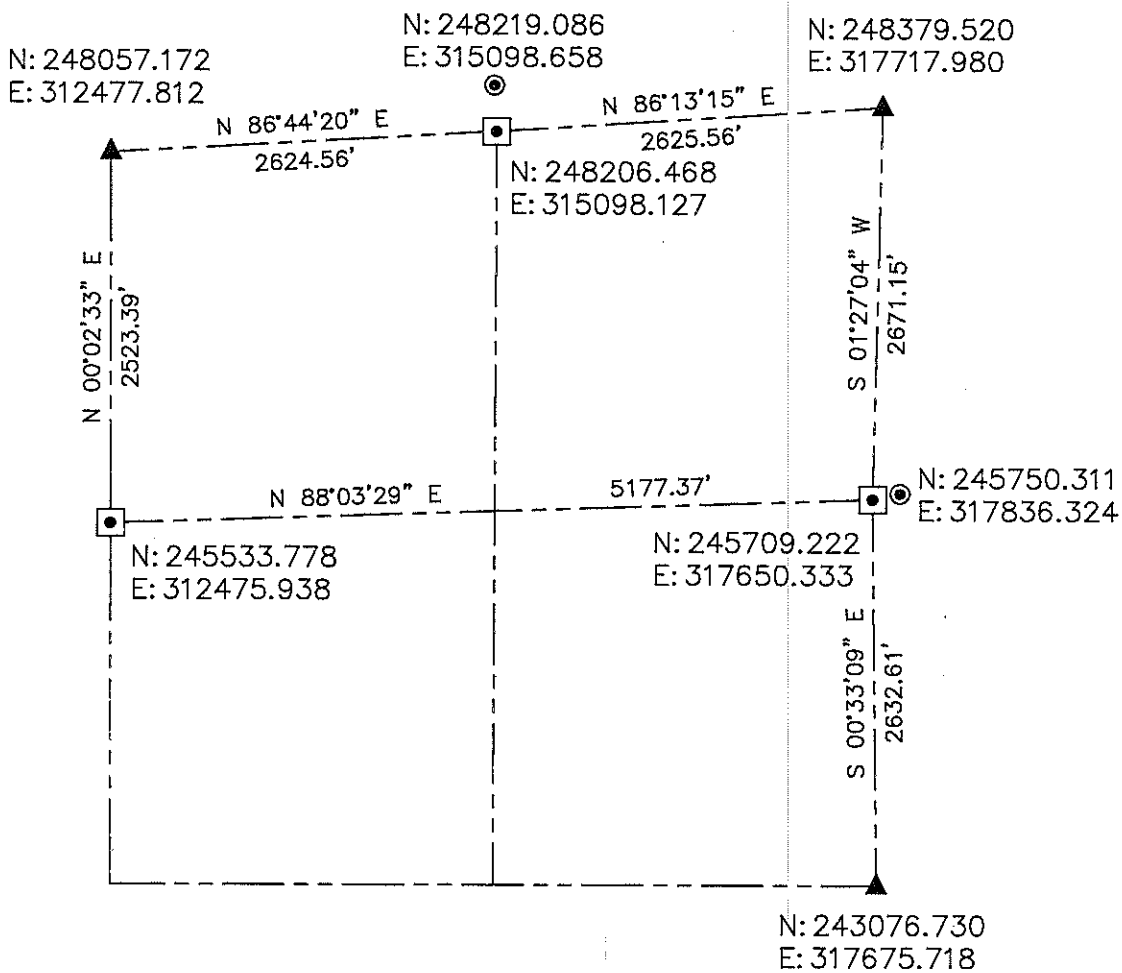


**LINCOLN COUNTY SECTION SUMMARY
SECTION 16
TOWNSHIP 35 NORTH RANGE 4 EAST
TOWN OF SOMO**



BEARINGS AND COORDINATES ARE BASED ON THE LINCOLN COUNTY COORDINATE SYSTEM

RECEIVED BY LINCOLN COUNTY
SURVEYOR THIS 17TH DAY
OF April 20 12
Tom Dall
COUNTY SURVEYOR

CERTIFIED CORRECT:



DARREN B. KRZANOWSKI RLS 2663
REGISTERED LAND SURVEYOR
DATED THIS 16TH DAY OF APRIL 2012

LEGEND

- ⊙ = 2in. IRON PIPE W/BRASS CAP
- ◻ = IRON PIPE WITH PLATE
- ▲ = CORNER LOCATION PER COUNTY SURVEY RECORDS

CENTRAL STAKING INC

2523 POST ROAD
STEVENS POINT, WI 54481
OFFICE 715-345-6904 FAX 715-345-7728