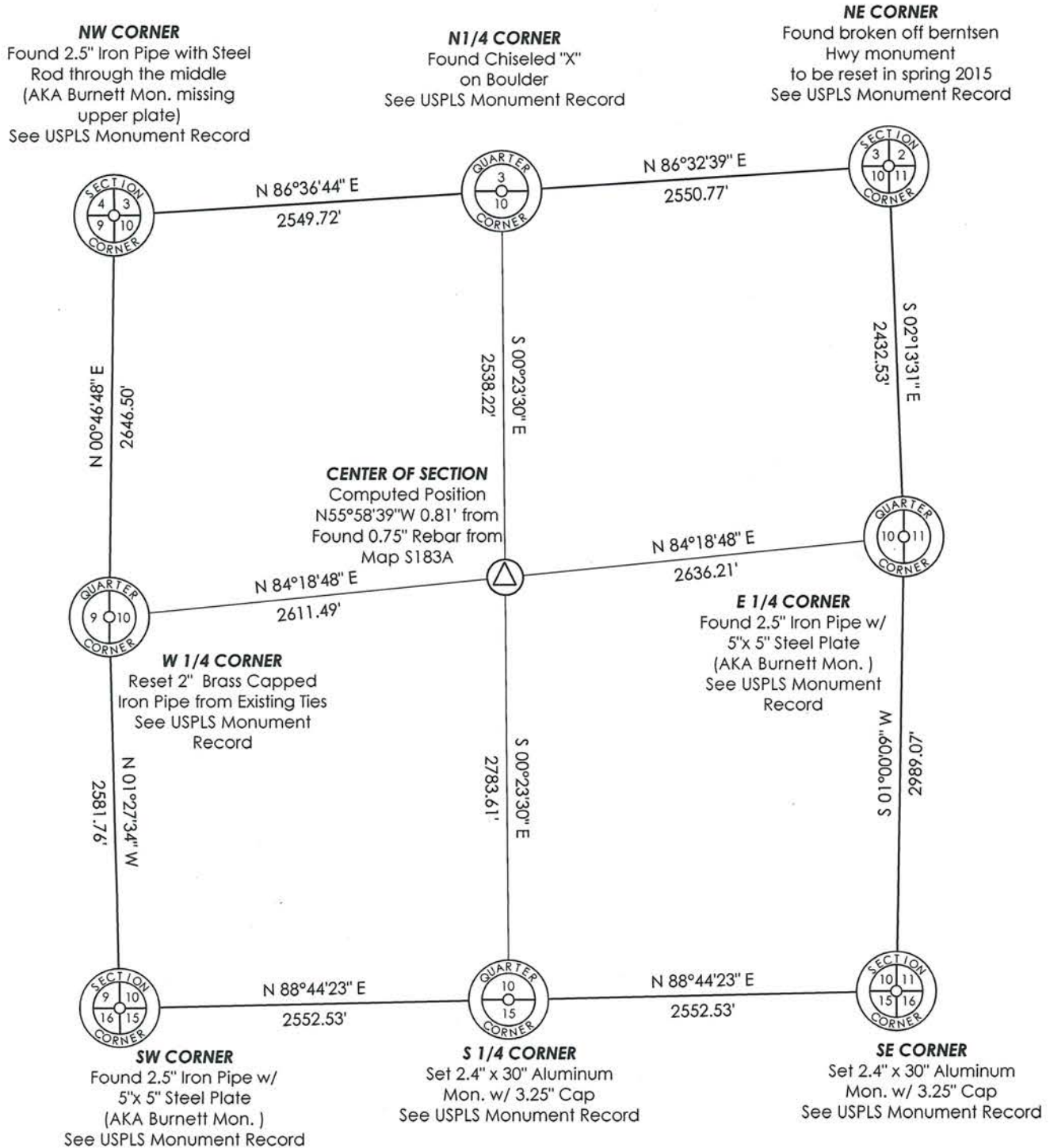


# U.S. PUBLIC LAND SURVEY SECTION SUMMARY

SECTION 10, TOWNSHIP 35 NORTH, RANGE 4 EAST,  
TOWN OF SOMO, LINCOLN COUNTY, WISCONSIN



**Note:** South 1/4 Corner of Section 10 was previously established by single proportion using the location of the Southwest corner and an incorrect location of the Southeast Corner on Map S183A filed in the Lincoln County Surveyor's Office dated May 10, 2001. The location of the South 1/4 Corner for this survey was established by single proportion using correct corner locations and section was broken down accordingly. See USPLS monument records filed in conjunction with this section summary.

Bearings Lincoln County Grid



Scale: 1"=1000'

RECEIVED BY LINCOLN COUNTY  
SURVEYOR THIS 26<sup>TH</sup> DAY  
OF December 20 14  
*Terry Dall*  
COUNTY SURVEYOR



I, Chad A. Besaw, Registered Land Surveyor No. S-3029, hereby certify that the corner locations on this record were determined by me or under my direction and control and that this U.S. Public Land Survey Section Summary is correct and complete to the best of my knowledge and belief.

*Chad A. Besaw* 12-26-14  
Chad A. Besaw, RLS No. S-3029  
STEIGERWALDT LAND SURVEYING, LLC

Sec. 10