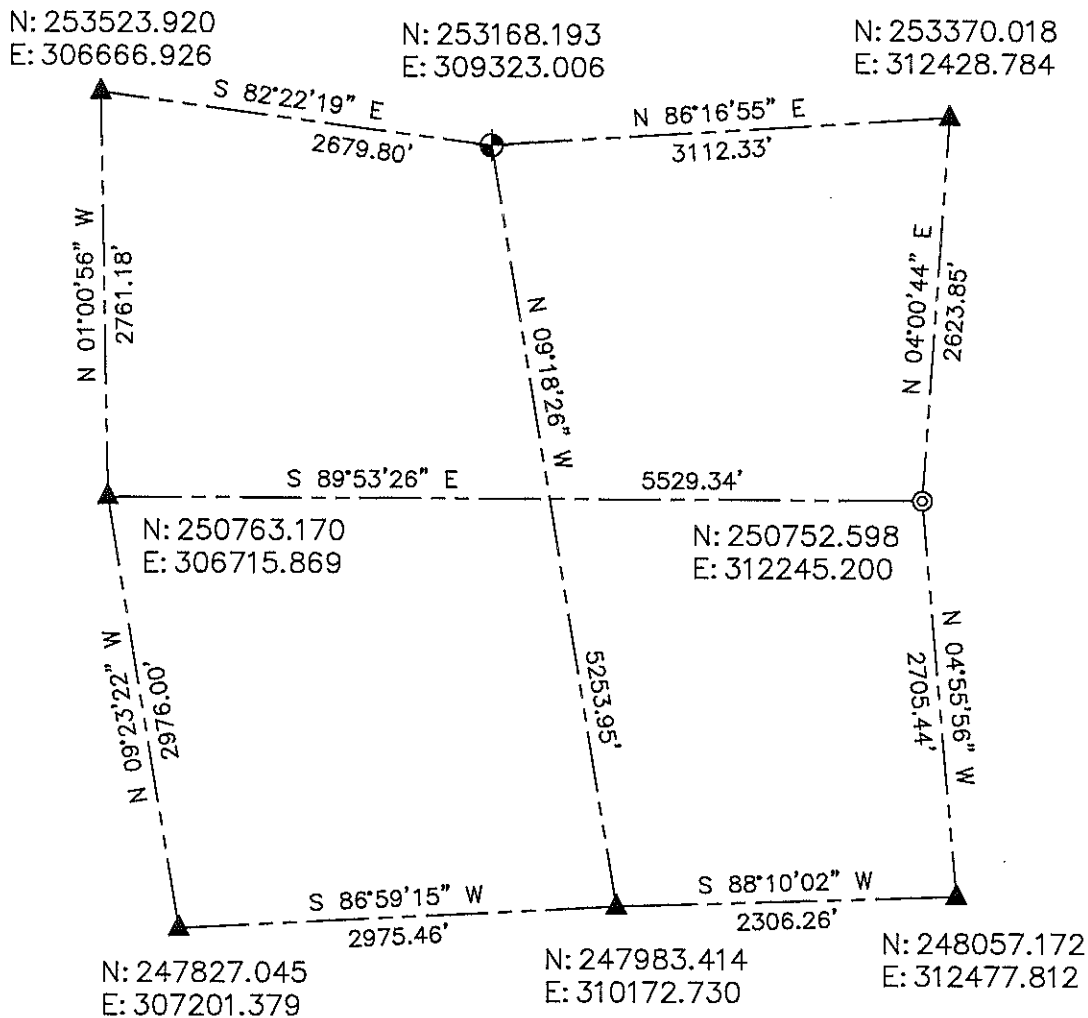


**LINCOLN COUNTY SECTION SUMMARY
SECTION 8
TOWNSHIP 35 NORTH RANGE 4 EAST
TOWN OF SOMO**



BEARINGS AND COORDINATES ARE BASED ON THE LINCOLN COUNTY COORDINATE SYSTEM

RECEIVED BY LINCOLN COUNTY
SURVEYOR THIS 30TH DAY
OF March 20 12
Tony Dahl
COUNTY SURVEYOR

CERTIFIED CORRECT:



DARREN B. KRZANOWSKI RLS 2663
REGISTERED LAND SURVEYOR
DATED THIS 28TH DAY OF MARCH 2012

LEGEND

- ⬤ = LINCOLN CO. ALUMINUM DRIVE-ABLE MONUMENT
- ▲ = CORNER LOCATION PER LINCOLN CO. SURVEY RECORDS
- ⊙ = LINCOLN CO. CAST ALUMINUM BERTSEN MONUMENT SET

CENTRAL STAKING INC
2523 POST ROAD
STEVENS POINT, WI 54481
OFFICE 715-345-6904 FAX 715-345-7728