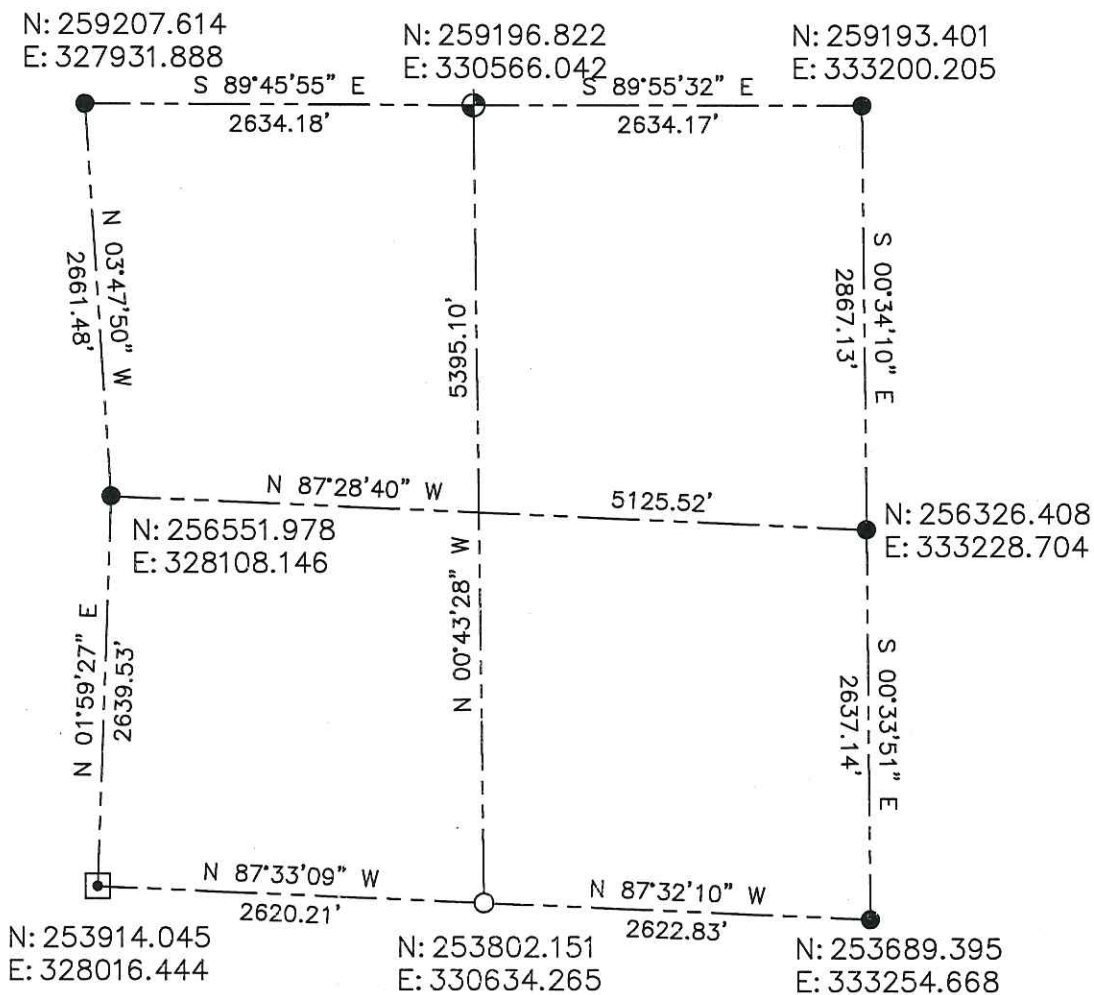


**LINCOLN COUNTY SECTION SUMMARY
SECTION 1
TOWNSHIP 35 NORTH RANGE 4 EAST
TOWN OF SOMO**



BEARINGS AND COORDINATES ARE BASED ON THE LINCOLN COUNTY COORDINATE SYSTEM

RECEIVED BY LINCOLN COUNTY
SURVEYOR THIS 17th DAY
OF December 20 12
Tom Dahl
COUNTY SURVEYOR

CERTIFIED CORRECT:



DARREN B. KRZANOWSKI RLS 2663
REGISTERED LAND SURVEYOR
DATED THIS 14TH DAY OF DECEMBER, 2012

LEGEND

- ⊕ = SURVEY MARKER PIN
- = COORDINATES BY OTHERS
- = 4in. IRON PIPE
- ◻ = 5in. x 5in. IRON PLATE

CENTRAL STAKING INC

2523 POST ROAD
STEVENS POINT, WI 54481
OFFICE 715-345-6904 FAX 715-345-7728

Sec. 1