

LINCOLN COUNTY SECTION SUMMARY

LEGEND

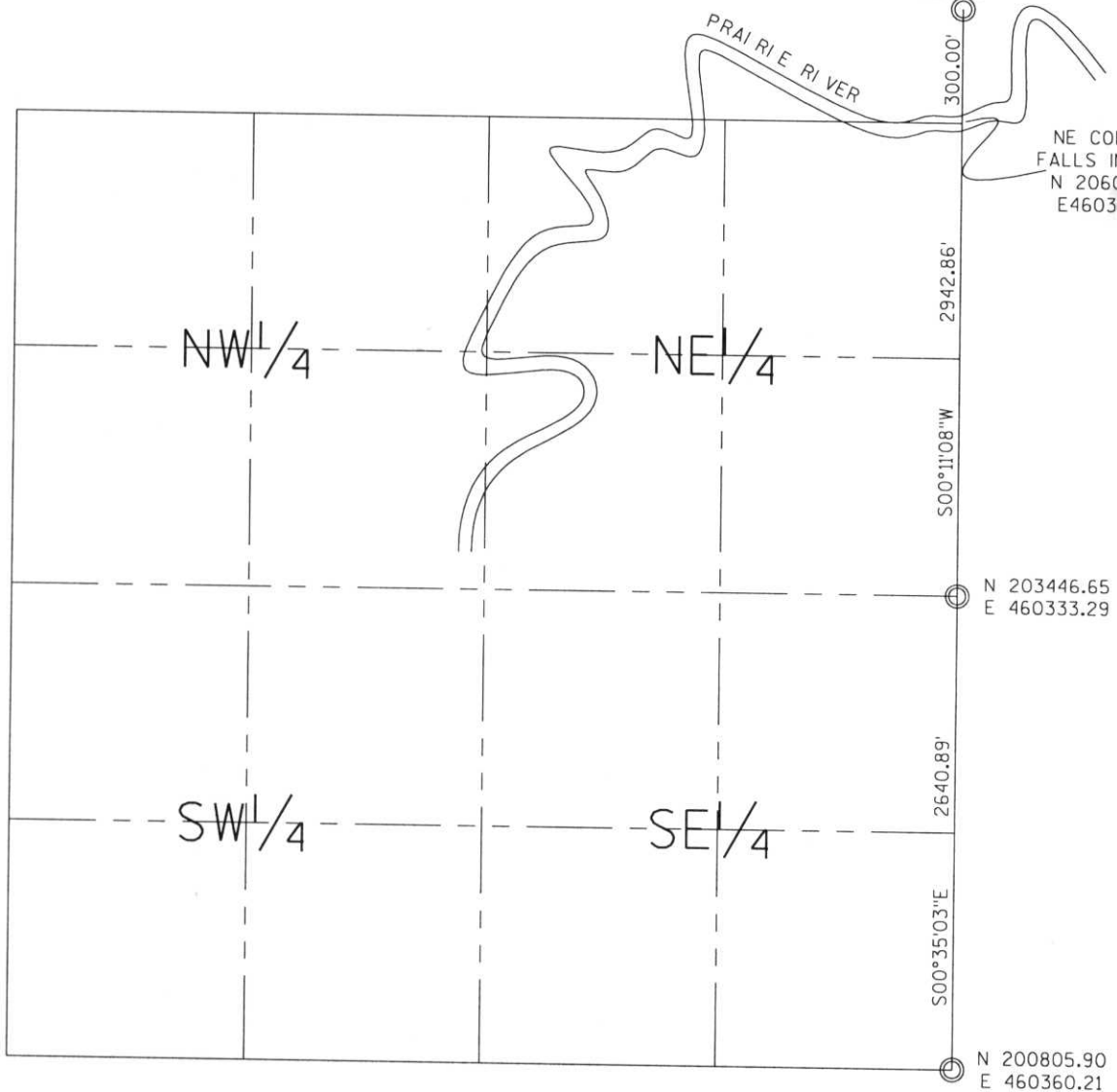
SECTION SUMMARY 25 SECTION 34N TOWNSHIP 8E RANGE
HARRISON TOWN

- FOUND GRANITE MONUMENT
- FOUND LINCOLN COUNTY MONUMENT
- SET LINCOLN COUNTY MONUMENT
- FOUND LANGLADE COUNTY MONUMENT



WITNESS CORNER
 N 206389.49
 E 460323.83

NE CORNER
 FALLS IN RIVER
 N 206089.49
 E 460324.79



N 203446.65
 E 460333.29

2640.89'
 S00°35'03\"/>

N 200805.90
 E 460360.21

RECEIVED AT LINCOLN COUNTY
 COURTHOUSE THIS 29th DAY
 OF December 20 03
Jeffrey L. Demuth
 LAND INFORMATION OFFICE

NOTES:
 COORDINATES AND BEARINGS ARE REFERENCED TO THE LINCOLN COUNTY
 COORDINATE SYSTEM AS DEVELOPED BY THE WISCONSIN DEPARTMENT
 OF TRANSPORTATION AND WERE DETERMINED BY GPS OBSERVATIONS ON
 CONTROL POINTS AS SUPPLIED BY THE COUNTY SURVEYOR.



CERTIFIED CORRECT:

Jeffrey L. Demuth 12/22/03
 Signature Date

Index No. 90-21,25