

LINCOLN COUNTY SECTION SUMMARY

LEGEND

- FOUND GRANITE MONUMENT
- FOUND LINCOLN COUNTY MONUMENT
- SET LINCOLN COUNTY MONUMENT
- FOUND LANGLADE COUNTY MONUMENT

SECTION SUMMARY 24 SECTION 34N TOWNSHIP 8E RANGE
HARRISON
 TOWN

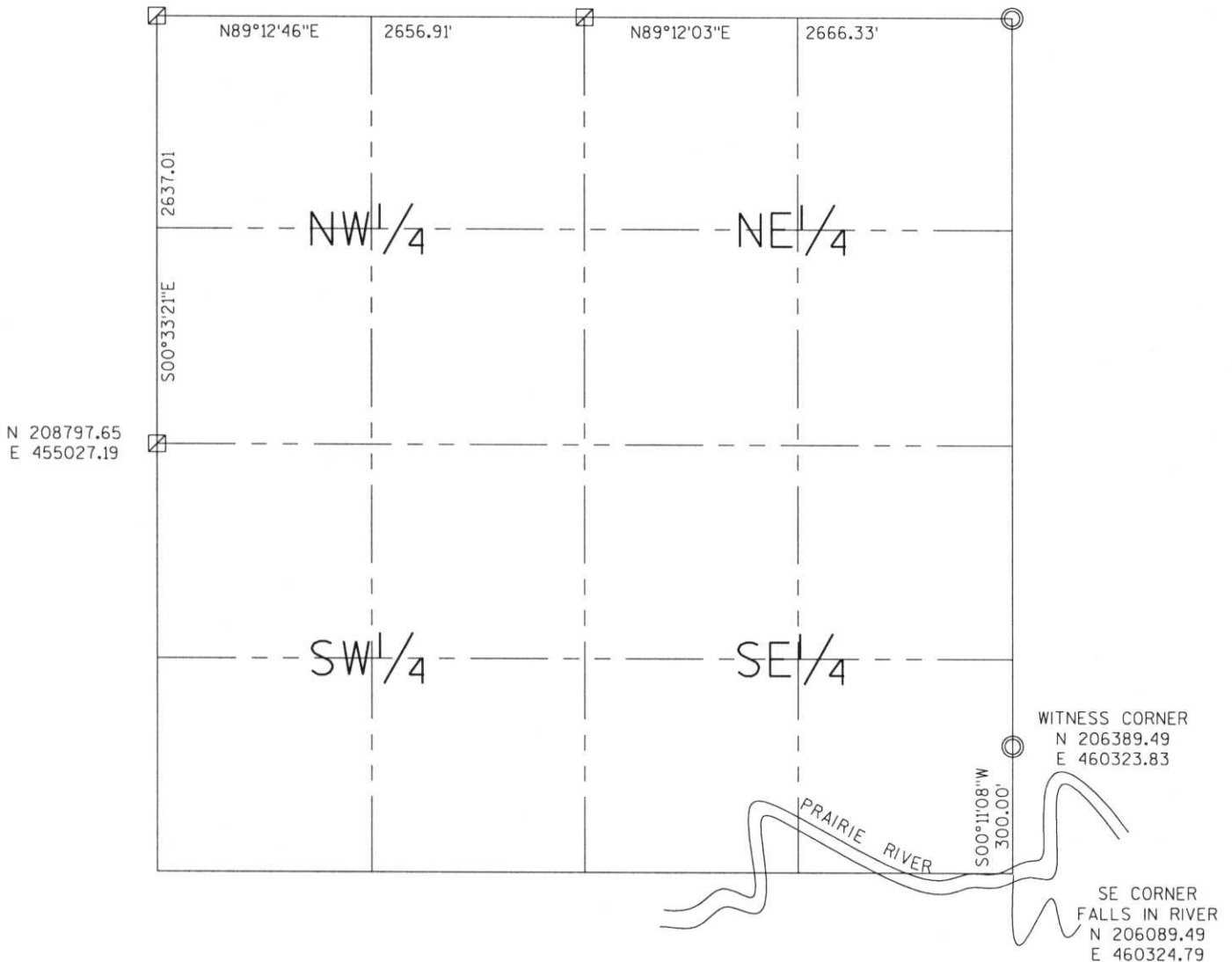
RECEIVED AT LINCOLN COUNTY
 COURTHOUSE THIS 29th DAY
 OF December 20 03
John A. Reardon
 LAND INFORMATION OFFICE



N 211434.54
 E 455001.61

N 211471.04
 E 457658.27

N 211508.23
 E 460324.34



NOTES:
 COORDINATES AND BEARINGS ARE REFERENCED TO THE LINCOLN COUNTY
 COORDINATE SYSTEM AS DEVELOPED BY THE WISCONSIN DEPARTMENT
 OF TRANSPORTATION AND WERE DETERMINED BY GPS OBSERVATIONS ON
 CONTROL POINTS AS SUPPLIED BY THE COUNTY SURVEYOR.



CERTIFIED CORRECT:

Jeffrey L. Demuth
 Signature Date 12/22/03

Index No. M.R. - 2125