

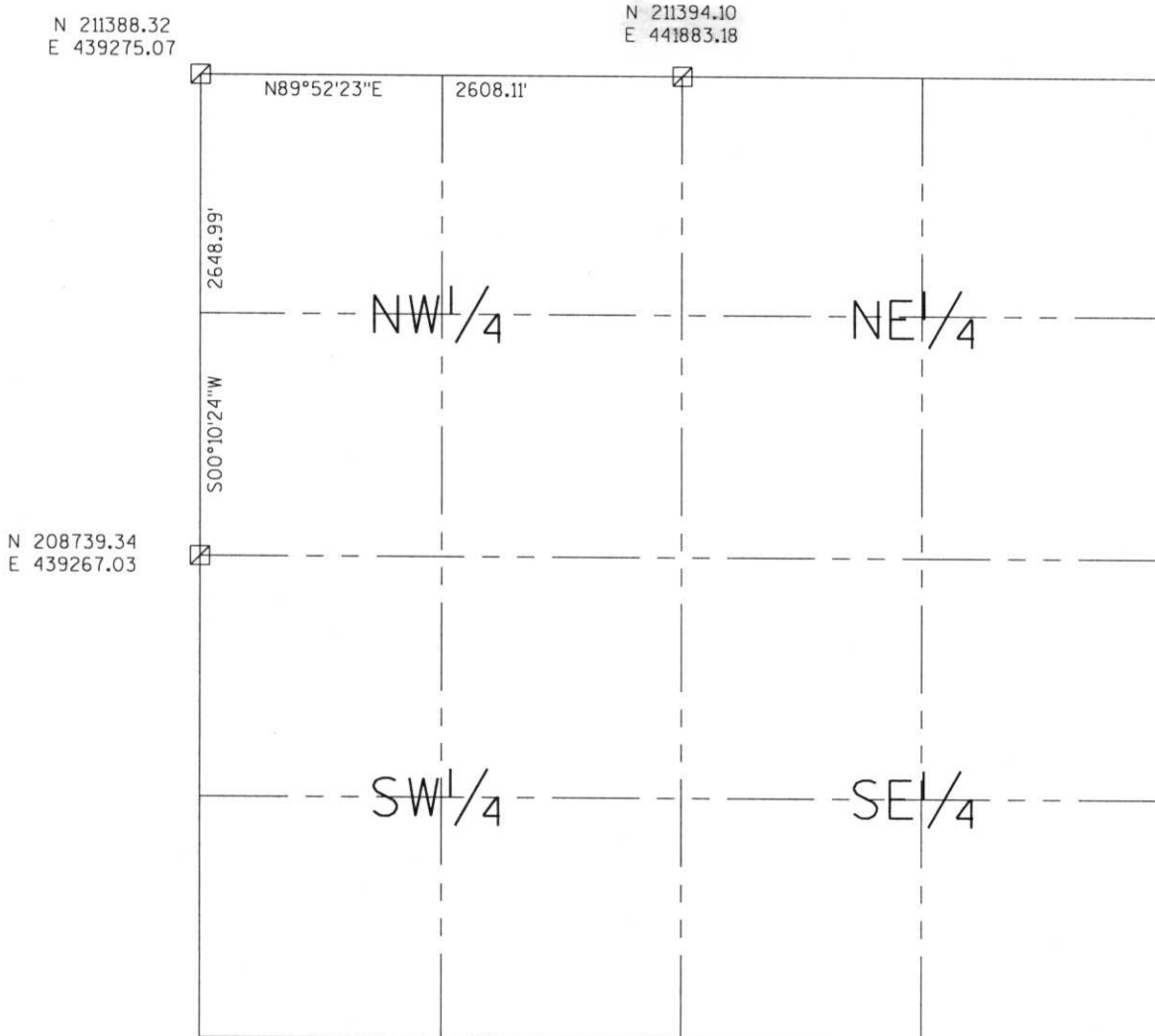
LINCOLN COUNTY SECTION SUMMARY

LEGEND

- FOUND GRANITE MONUMENT
- FOUND LINCOLN COUNTY MONUMENT
- SET LINCOLN COUNTY MONUMENT
- FOUND LANGLADE COUNTY MONUMENT

SECTION SUMMARY 21 34N 8E
SECTION TOWNSHIP RANGE
HARRISON
TOWN

**RECEIVED AT LINCOLN COUNTY
 COURTHOUSE THIS 29th DAY
 OF December 20 03
Tanya A. Raunusa
LAND INFORMATION OFFICE**



NOTES:
 COORDINATES AND BEARINGS ARE REFERENCED TO THE LINCOLN COUNTY
 COORDINATE SYSTEM AS DEVELOPED BY THE WISCONSIN DEPARTMENT
 OF TRANSPORTATION AND WERE DETERMINED BY GPS OBSERVATIONS ON
 CONTROL POINTS AS SUPPLIED BY THE COUNTY SURVEYOR.



CERTIFIED CORRECT:

Jeffrey L. Demuth 12/22/03
 Signature Date

Index No. **MA-913**

LINCOLN COUNTY SECTION SUMMARY

LEGEND

- ☐ FOUND GRANITE MONUMENT
- ⊕ FOUND LINCOLN COUNTY MONUMENT
- ⊗ SET LINCOLN COUNTY MONUMENT
- ⊙ FOUND LANGLADE COUNTY MONUMENT

SECTION SUMMARY

21
SECTION

34N
TOWNSHIP

8E
RANGE

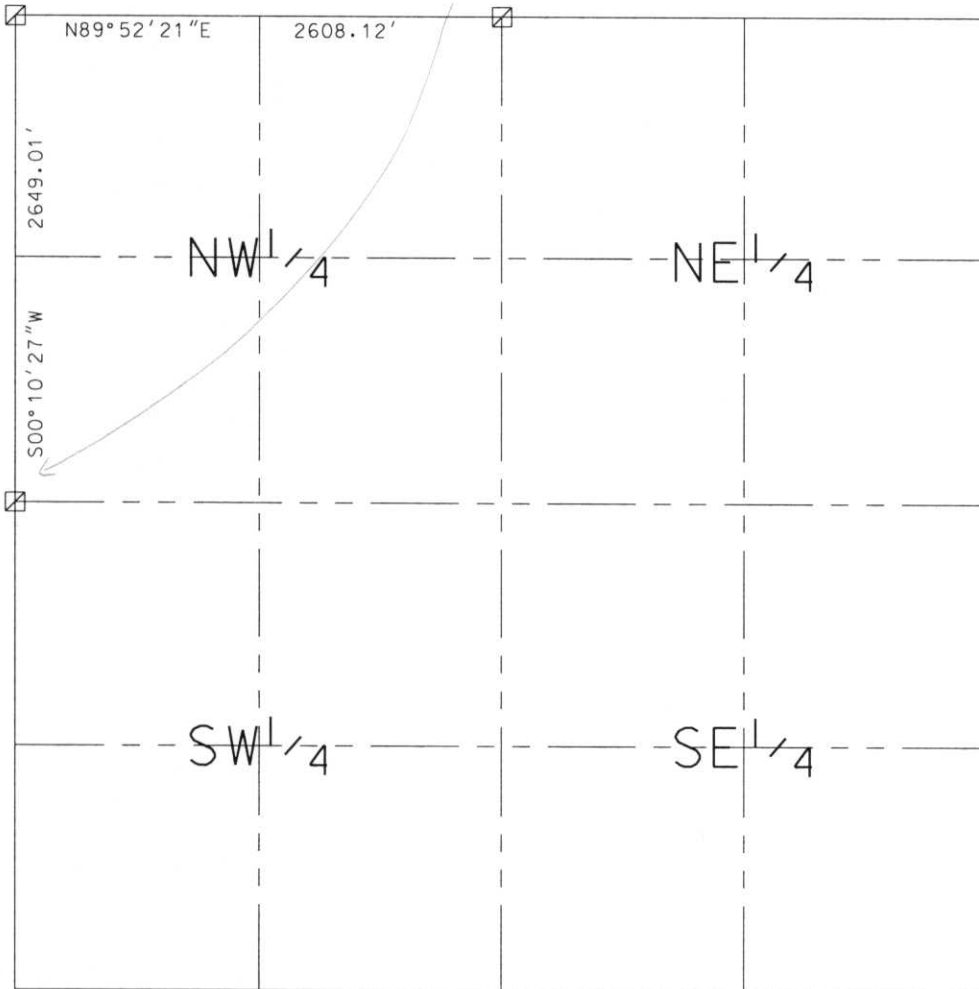
HARRISON
TOWN



see revised section summary dated 12/22/03

N 211388.30
E 439275.04

N 208739.30 -?
E 439266.99 -?



N 208739.30
E 439266.99

RECEIVED AT LINCOLN COUNTY
COURTHOUSE THIS 11TH DAY
OF December 20 02
Tony Dahn
LAND INFORMATION OFFICE

NOTES:
COORDINATES AND BEARINGS ARE REFERENCED TO THE LINCOLN COUNTY COORDINATE SYSTEM AS DEVELOPED BY THE WISCONSIN DEPARTMENT OF TRANSPORTATION AND WERE DETERMINED BY GPS OBSERVATIONS ON CONTROL POINTS AS SUPPLIED BY THE COUNTY SURVEYOR.

CERTIFIED CORRECT:

Dennis B. Roberts
Signature

12-06-02
Date



Index No. M-0-213