

# LINCOLN COUNTY SECTION SUMMARY

LEGEND

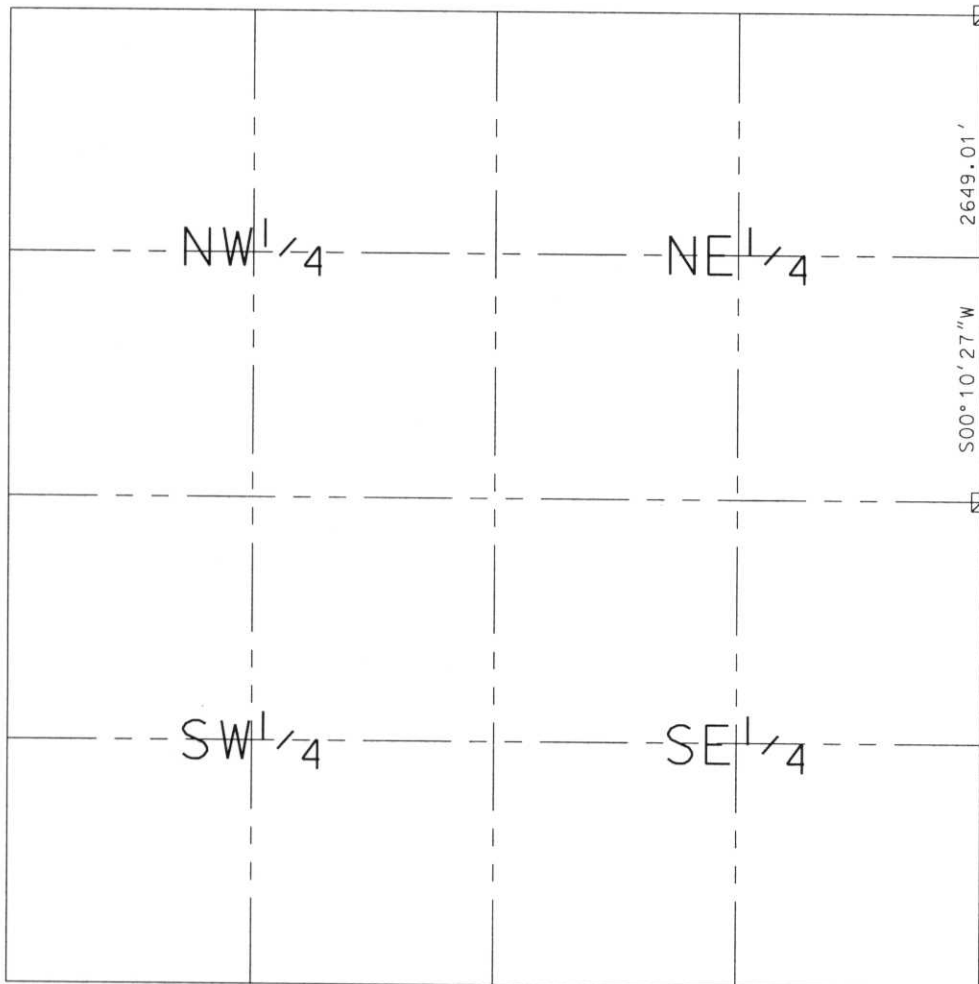
SECTION SUMMARY    20 SECTION    34N TOWNSHIP    8E RANGE

HARRISON  
TOWN

- FOUND GRANITE MONUMENT
- FOUND LINCOLN COUNTY MONUMENT
- SET LINCOLN COUNTY MONUMENT
- FOUND LANGLADE COUNTY MONUMENT



N 211388.30  
E 439275.04



N 208739.30  
E 439266.99

RECEIVED AT LINCOLN COUNTY  
COURTHOUSE THIS 11<sup>TH</sup> DAY  
OF December 20 02  
Tommy Daller  
LAND INFORMATION OFFICE

NOTES:  
COORDINATES AND BEARINGS ARE REFERENCED TO THE LINCOLN COUNTY  
COORDINATE SYSTEM AS DEVELOPED BY THE WISCONSIN DEPARTMENT  
OF TRANSPORTATION AND WERE DETERMINED BY GPS OBSERVATIONS ON  
CONTROL POINTS AS SUPPLIED BY THE COUNTY SURVEYOR.



CERTIFIED CORRECT:

Dennis B. Roberts  
Signature

12-06-02  
Date

Index No. M.O.-59

# LINCOLN COUNTY SECTION SUMMARY

LEGEND

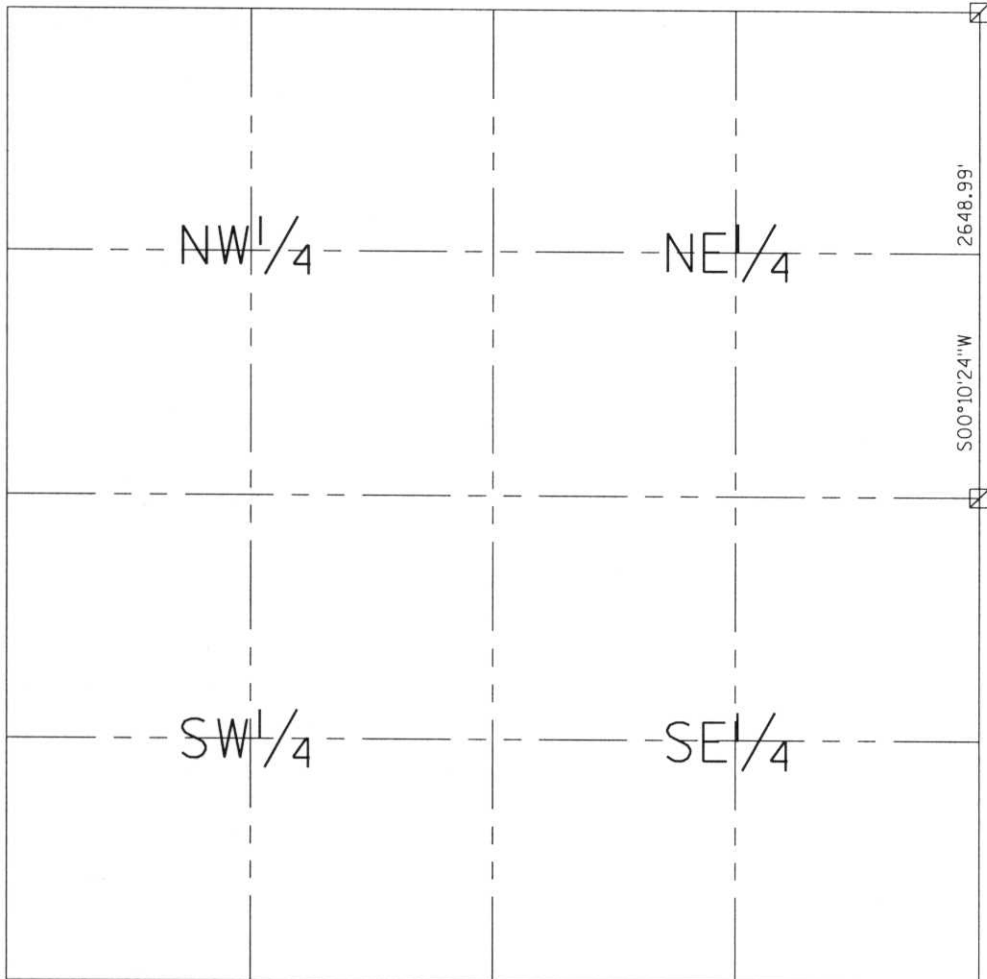
- FOUND GRANITE MONUMENT
- FOUND LINCOLN COUNTY MONUMENT
- SET LINCOLN COUNTY MONUMENT
- FOUND LANGLADE COUNTY MONUMENT

SECTION SUMMARY    20    34N    8E  
SECTION    TOWNSHIP    RANGE  
HARRISON  
TOWN

**RECEIVED AT LINCOLN COUNTY  
 COURTHOUSE THIS 29<sup>th</sup> DAY  
 OF December 20 03  
Tara A. Rasmussen  
**LAND INFORMATION OFFICE****



N 211388.32  
E 439275.07



N 208739.34  
E 439267.03

NOTES:  
 COORDINATES AND BEARINGS ARE REFERENCED TO THE LINCOLN COUNTY COORDINATE SYSTEM AS DEVELOPED BY THE WISCONSIN DEPARTMENT OF TRANSPORTATION AND WERE DETERMINED BY GPS OBSERVATIONS ON CONTROL POINTS AS SUPPLIED BY THE COUNTY SURVEYOR.



CERTIFIED CORRECT:

*Jeffrey L. Demuth*                      12/22/03  
 Signature                                      Date

Index No. M.Q.-59