

LINCOLN COUNTY SECTION SUMMARY

LEGEND

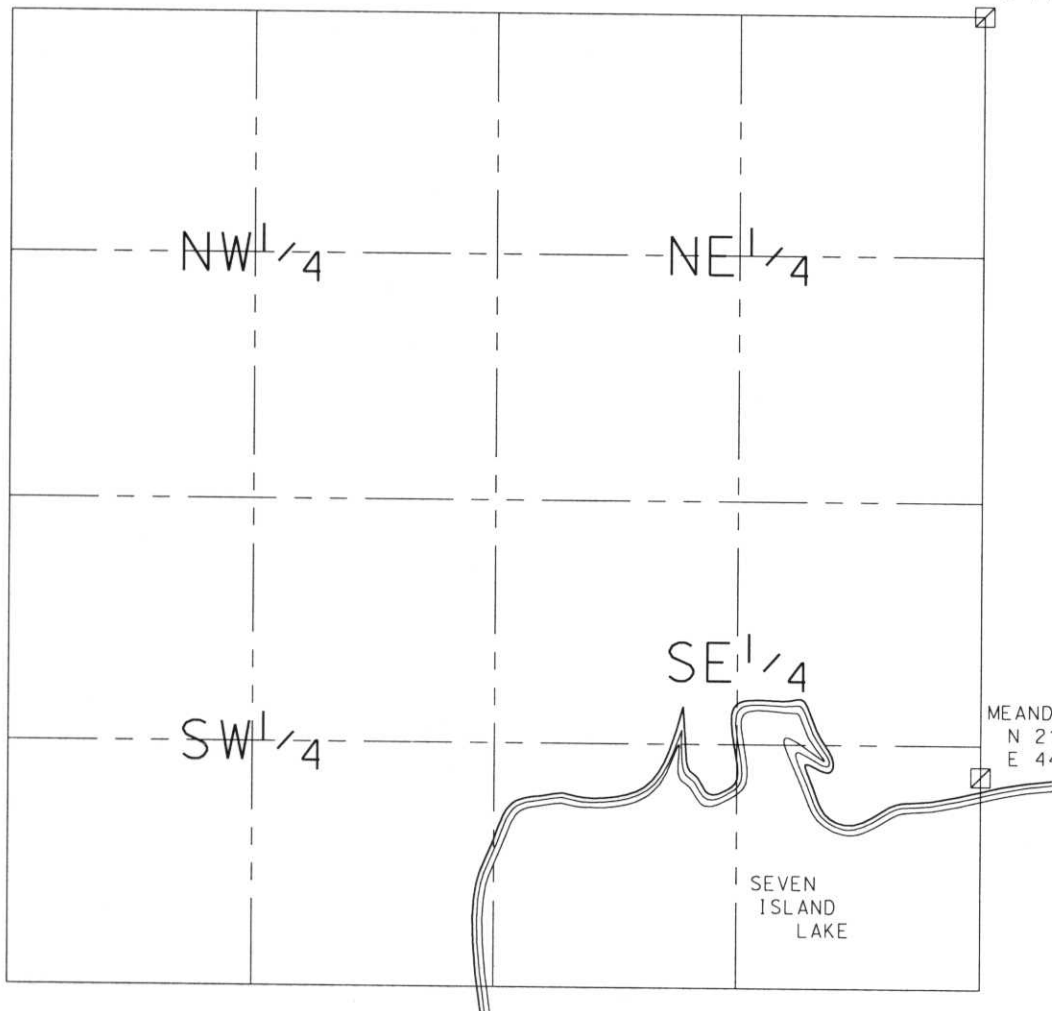
SECTION SUMMARY 15 SECTION 34N TOWNSHIP 8E RANGE

HARRISON
TOWN

- FOUND GRANITE MONUMENT
- FOUND LINCOLN COUNTY MONUMENT
- SET LINCOLN COUNTY MONUMENT
- FOUND LANGLADE COUNTY MONUMENT



N 216738.02
E 449753.10



RECEIVED AT LINCOLN COUNTY
COURTHOUSE THIS 11th DAY
OF December 20 02
Tony Daller
LAND INFORMATION OFFICE

NOTES:
COORDINATES AND BEARINGS ARE REFERENCED TO THE LINCOLN COUNTY
COORDINATE SYSTEM AS DEVELOPED BY THE WISCONSIN DEPARTMENT
OF TRANSPORTATION AND WERE DETERMINED BY GPS OBSERVATIONS ON
CONTROL POINTS AS SUPPLIED BY THE COUNTY SURVEYOR.

CERTIFIED CORRECT:

Dennis B. Roberts
Signature

12-06-02
Date



Index No. 7, m-13, 17

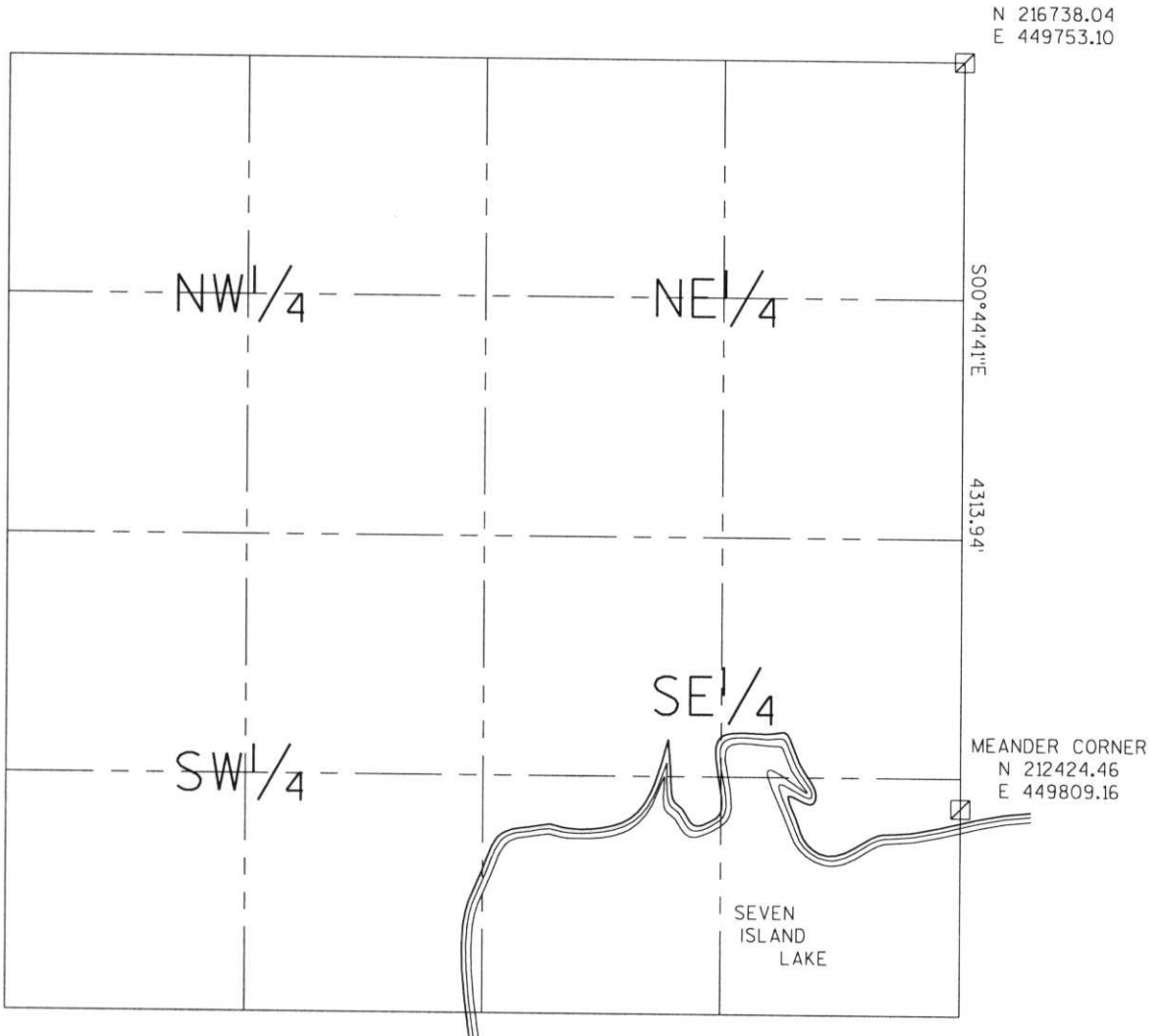
LINCOLN COUNTY SECTION SUMMARY

LEGEND

SECTION SUMMARY 15 SECTION 34N TOWNSHIP 8E RANGE
HARRISON TOWN

- FOUND GRANITE MONUMENT
- FOUND LINCOLN COUNTY MONUMENT
- SET LINCOLN COUNTY MONUMENT
- FOUND LANGLADE COUNTY MONUMENT

RECEIVED AT LINCOLN COUNTY
 COURTHOUSE THIS 29th DAY
 OF December 20 03
Tanya A. Rosman
 LAND INFORMATION OFFICE



NOTES:
 COORDINATES AND BEARINGS ARE REFERENCED TO THE LINCOLN COUNTY
 COORDINATE SYSTEM AS DEVELOPED BY THE WISCONSIN DEPARTMENT
 OF TRANSPORTATION AND WERE DETERMINED BY GPS OBSERVATIONS ON
 CONTROL POINTS AS SUPPLIED BY THE COUNTY SURVEYOR.



CERTIFIED CORRECT:

Jeffrey L. Demuth 12/22/03
 Signature Date

Index No. J, M - 13, 17