

# LINCOLN COUNTY SECTION SUMMARY

**LEGEND**

- FOUND GRANITE MONUMENT
- FOUND LINCOLN COUNTY MONUMENT
- SET LINCOLN COUNTY MONUMENT
- FOUND LANGLADE COUNTY MONUMENT

SECTION SUMMARY

12 SECTION

34N TOWNSHIP

8E RANGE

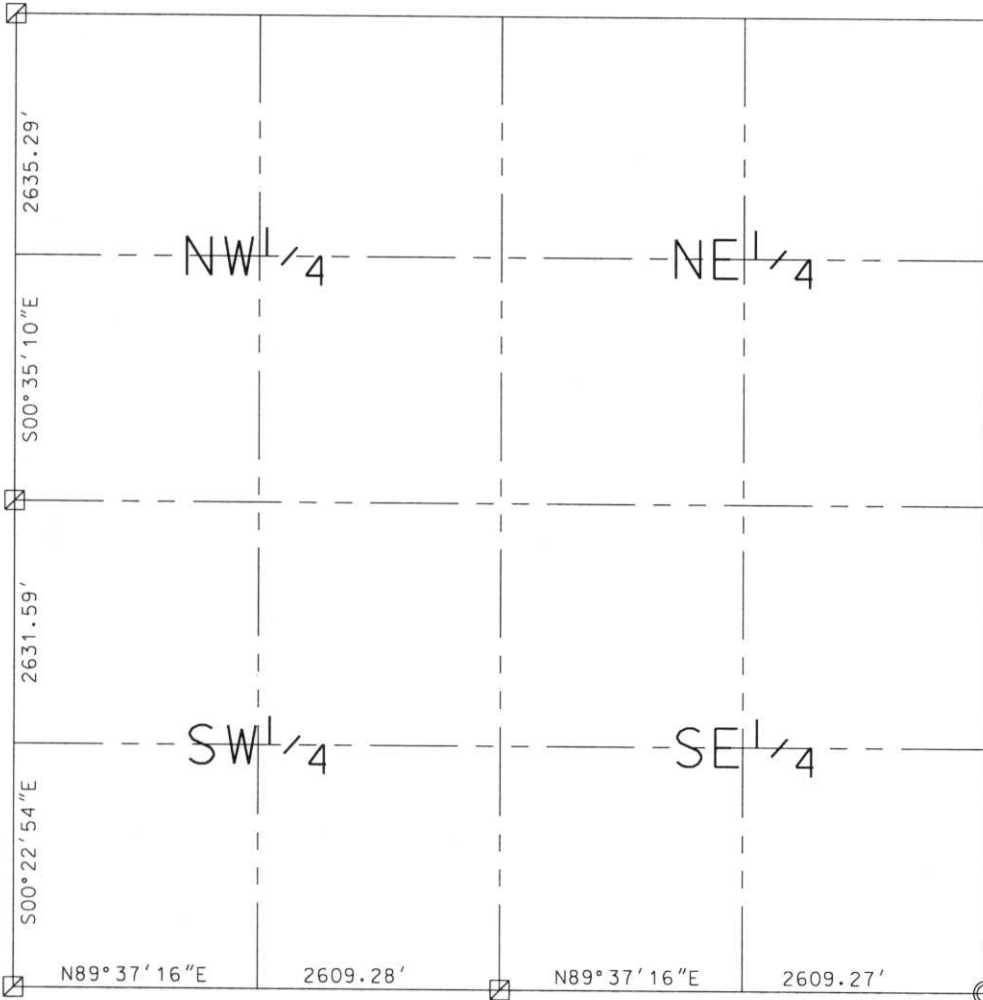
HARRISON TOWN



N 221904.84  
E 455049.24

N 219269.69  
E 455076.20

N 216638.16  
E 455093.73



N 216639.84  
E 457702.16

N 216657.10  
E 460311.38

RECEIVED AT LINCOLN COUNTY  
COURTHOUSE THIS 11<sup>TH</sup> DAY  
OF December 20 02  
Tony Dalko  
LAND INFORMATION OFFICE

NOTES:  
COORDINATES AND BEARINGS ARE REFERENCED TO THE LINCOLN COUNTY COORDINATE SYSTEM AS DEVELOPED BY THE WISCONSIN DEPARTMENT OF TRANSPORTATION AND WERE DETERMINED BY GPS OBSERVATIONS ON CONTROL POINTS AS SUPPLIED BY THE COUNTY SURVEYOR.

CERTIFIED CORRECT:

Dennis B. Roberts  
Signature

12-06-02  
Date



Index No. E, I - 21, 25

# LINCOLN COUNTY SECTION SUMMARY

**LEGEND**

SECTION SUMMARY 12 SECTION 34N TOWNSHIP 8E RANGE  
**HARRISON** TOWN

- FOUND GRANITE MONUMENT
- FOUND LINCOLN COUNTY MONUMENT
- SET LINCOLN COUNTY MONUMENT
- FOUND LANGLADE COUNTY MONUMENT

RECEIVED AT LINCOLN COUNTY  
 COURTHOUSE THIS 29<sup>th</sup> DAY  
 OF December 20 03  
Jay A. Rasmussen  
 LAND INFORMATION OFFICE



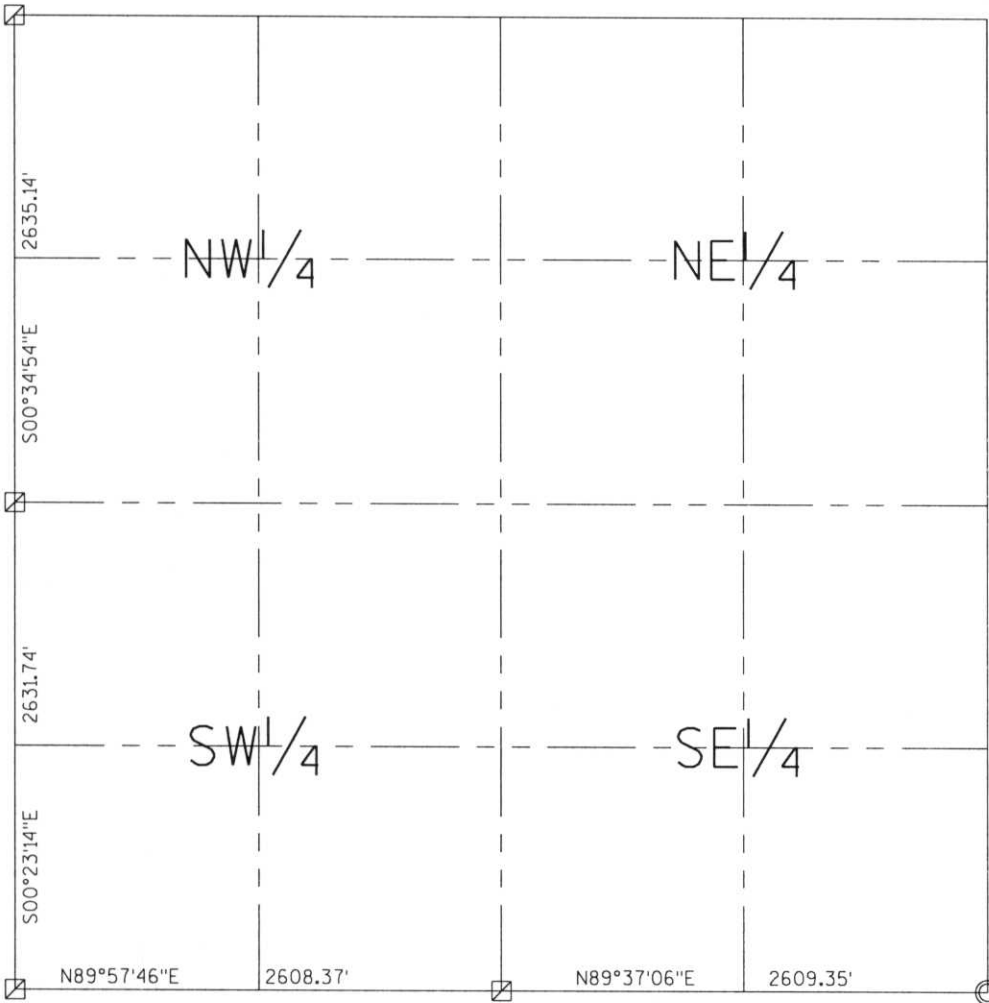
N 221904.82  
 E 455049.20

N 219269.82  
 E 455075.95

N 216638.14  
 E 455093.74

N 216639.83  
 E 457702.11

N 216657.21  
 E 460311.40



NOTES:  
 COORDINATES AND BEARINGS ARE REFERENCED TO THE LINCOLN COUNTY  
 COORDINATE SYSTEM AS DEVELOPED BY THE WISCONSIN DEPARTMENT  
 OF TRANSPORTATION AND WERE DETERMINED BY GPS OBSERVATIONS ON  
 CONTROL POINTS AS SUPPLIED BY THE COUNTY SURVEYOR.



CERTIFIED CORRECT:

Jeffrey L. Demuth 12/22/03  
 Signature Date

Index No. EI-2105