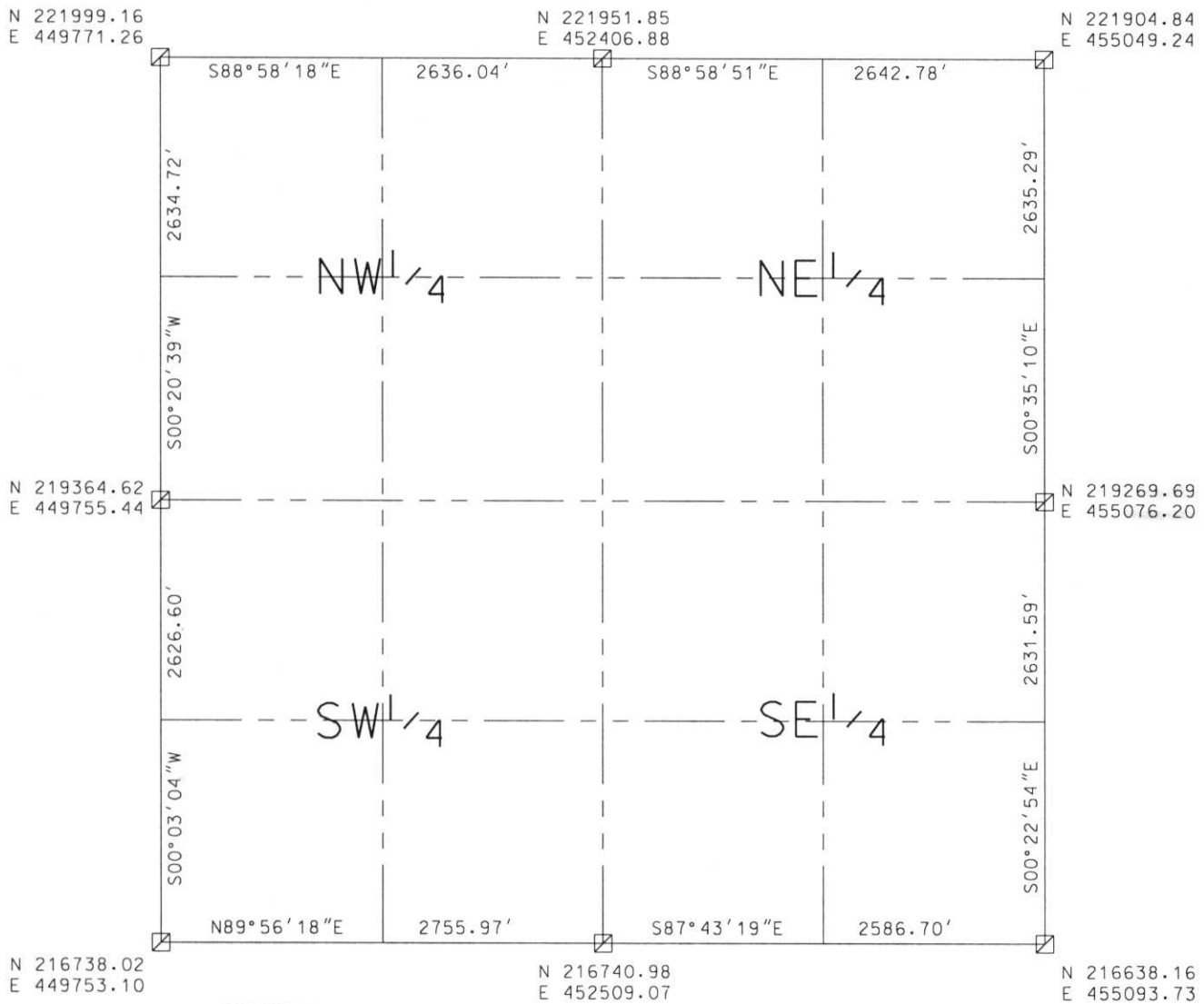


# LINCOLN COUNTY SECTION SUMMARY

**LEGEND**

- ☐ FOUND GRANITE MONUMENT
- ⊕ FOUND LINCOLN COUNTY MONUMENT
- ⊙ SET LINCOLN COUNTY MONUMENT
- ⊙ FOUND LANGLADE COUNTY MONUMENT

SECTION SUMMARY 11 SECTION 34N TOWNSHIP 8E RANGE  
**HARRISON** TOWN



RECEIVED AT LINCOLN COUNTY  
 COURTHOUSE THIS 11<sup>TH</sup> DAY  
 OF December 2002  
*Tony Dath*  
 LAND INFORMATION OFFICE

NOTES:  
 COORDINATES AND BEARINGS ARE REFERENCED TO THE LINCOLN COUNTY  
 COORDINATE SYSTEM AS DEVELOPED BY THE WISCONSIN DEPARTMENT  
 OF TRANSPORTATION AND WERE DETERMINED BY GPS OBSERVATIONS ON  
 CONTROL POINTS AS SUPPLIED BY THE DOT.

CERTIFIED CORRECT:

*Dennis B. Roberts*  
 Signature

12-06-02  
 Date



Index No. E.I.-1224

# LINCOLN COUNTY SECTION SUMMARY

**LEGEND**

- FOUND GRANITE MONUMENT
- FOUND LINCOLN COUNTY MONUMENT
- SET LINCOLN COUNTY MONUMENT
- FOUND LANGLADE COUNTY MONUMENT

SECTION SUMMARY

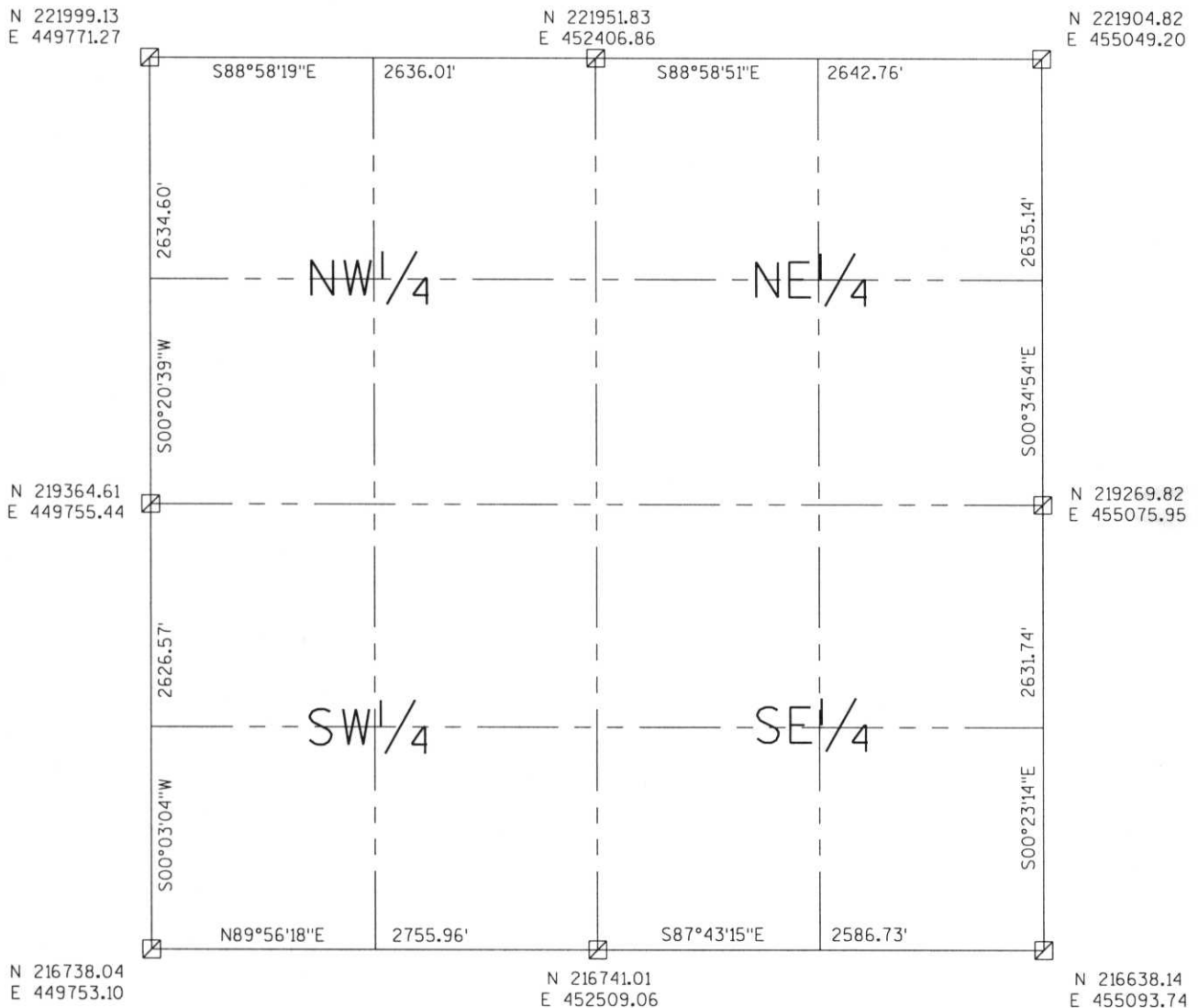
11 SECTION

34N TOWNSHIP

8E RANGE

HARRISON TOWN

RECEIVED AT LINCOLN COUNTY  
COURTHOUSE THIS 29<sup>th</sup> DAY  
OF December 20 03  
*Tanya A. Rasmussen*  
LAND INFORMATION OFFICE



NOTES:  
COORDINATES AND BEARINGS ARE REFERENCED TO THE LINCOLN COUNTY COORDINATE SYSTEM AS DEVELOPED BY THE WISCONSIN DEPARTMENT OF TRANSPORTATION AND WERE DETERMINED BY GPS OBSERVATIONS ON CONTROL POINTS AS SUPPLIED BY THE DOT.



CERTIFIED CORRECT:

*Jeffrey L. Demuth* 12/22/03  
Signature Date

Index No. E.I.-17.01