

LINCOLN COUNTY SECTION SUMMARY

LEGEND

SECTION SUMMARY

6
SECTION

34N
TOWNSHIP

8E
RANGE

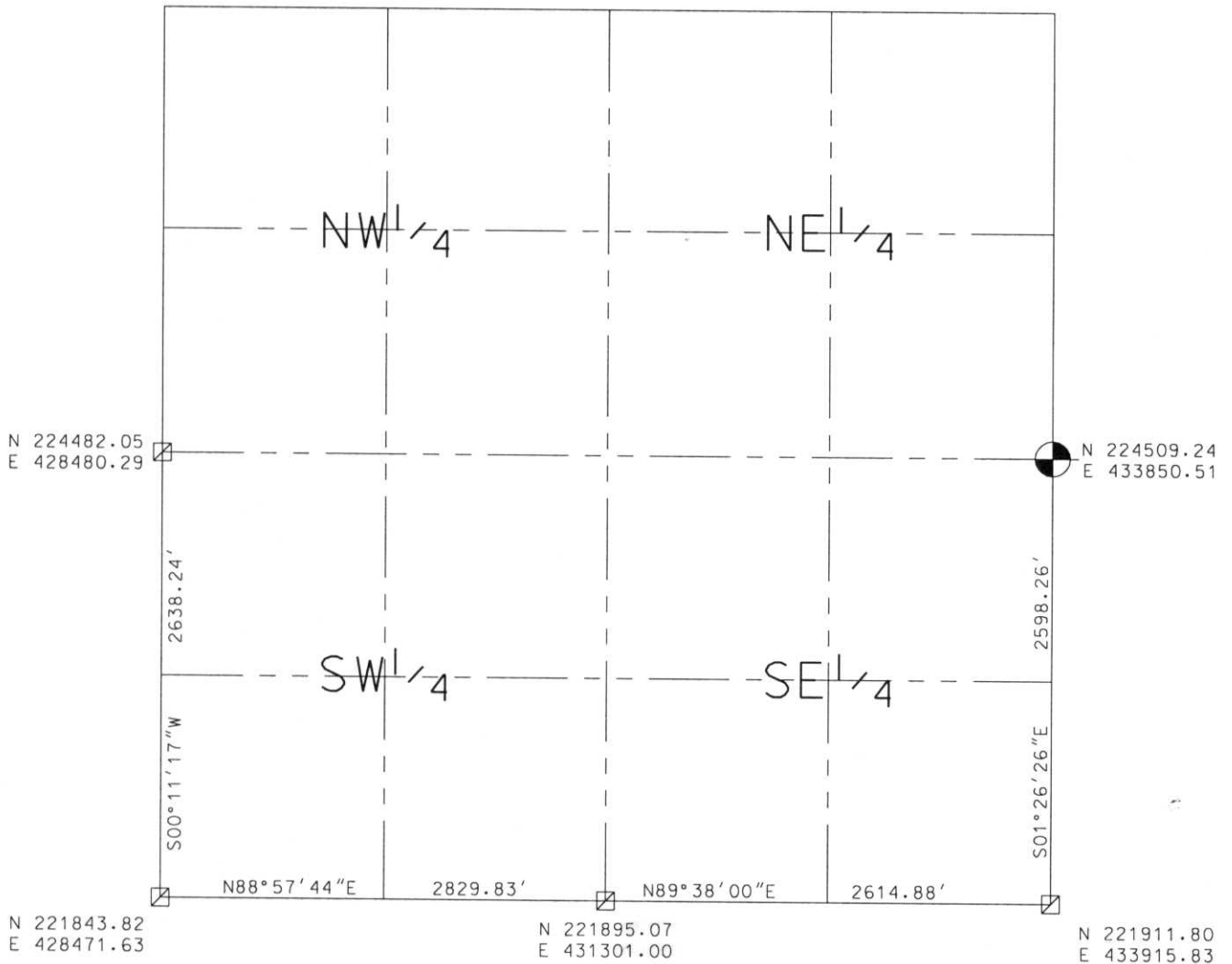
HARRISON
TOWN

☐ FOUND GRANITE MONUMENT

⊕ FOUND LINCOLN COUNTY MONUMENT

⊙ SET LINCOLN COUNTY MONUMENT

⊙ FOUND LANGLADE COUNTY MONUMENT



RECEIVED AT LINCOLN COUNTY
COURTHOUSE THIS 11TH DAY
OF December 2002
Tomy Dallen
LAND INFORMATION OFFICE

NOTES:
COORDINATES AND BEARINGS ARE REFERENCED TO THE LINCOLN COUNTY COORDINATE SYSTEM AS DEVELOPED BY THE WISCONSIN DEPARTMENT OF TRANSPORTATION AND WERE DETERMINED BY GPS OBSERVATIONS ON CONTROL POINTS AS SUPPLIED BY THE COUNTY SURVEYOR.

CERTIFIED CORRECT:

Dennis B. Roberts
Signature

12-06-02
Date



Index No. AE-15

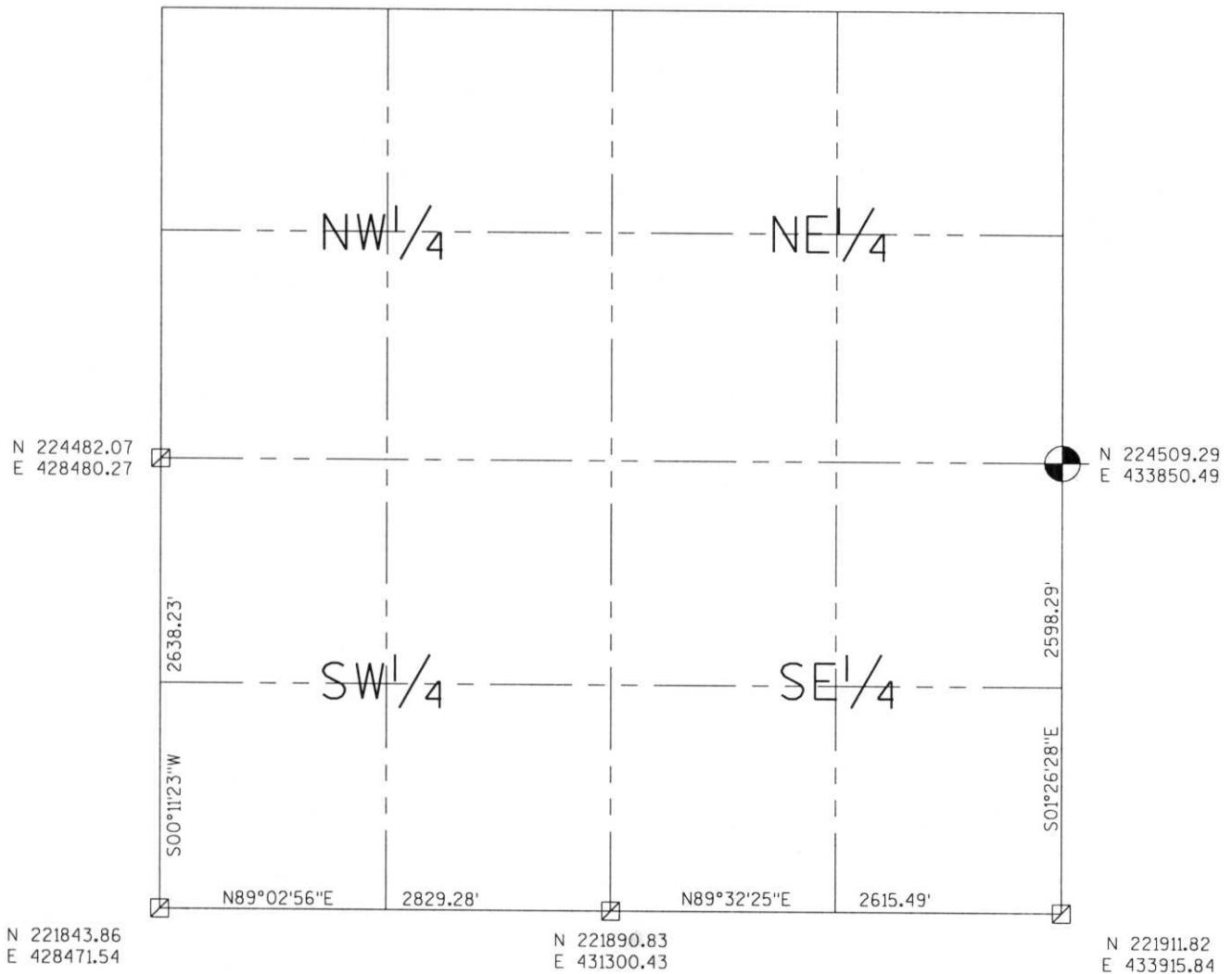
LINCOLN COUNTY SECTION SUMMARY

LEGEND

- FOUND GRANITE MONUMENT
- FOUND LINCOLN COUNTY MONUMENT
- SET LINCOLN COUNTY MONUMENT
- FOUND LANGLADE COUNTY MONUMENT

SECTION SUMMARY 6 SECTION 34N TOWNSHIP 8E RANGE
HARRISON TOWN

RECEIVED AT LINCOLN COUNTY COURTHOUSE THIS 29th DAY OF December 20 03
Tara A. Raamasa
 LAND INFORMATION OFFICE



NOTES:
 COORDINATES AND BEARINGS ARE REFERENCED TO THE LINCOLN COUNTY COORDINATE SYSTEM AS DEVELOPED BY THE WISCONSIN DEPARTMENT OF TRANSPORTATION AND WERE DETERMINED BY GPS OBSERVATIONS ON CONTROL POINTS AS SUPPLIED BY THE COUNTY SURVEYOR.



CERTIFIED CORRECT:

Jeffrey L. Demuth Signature 12/22/03 Date

Index No. A, E - 15