




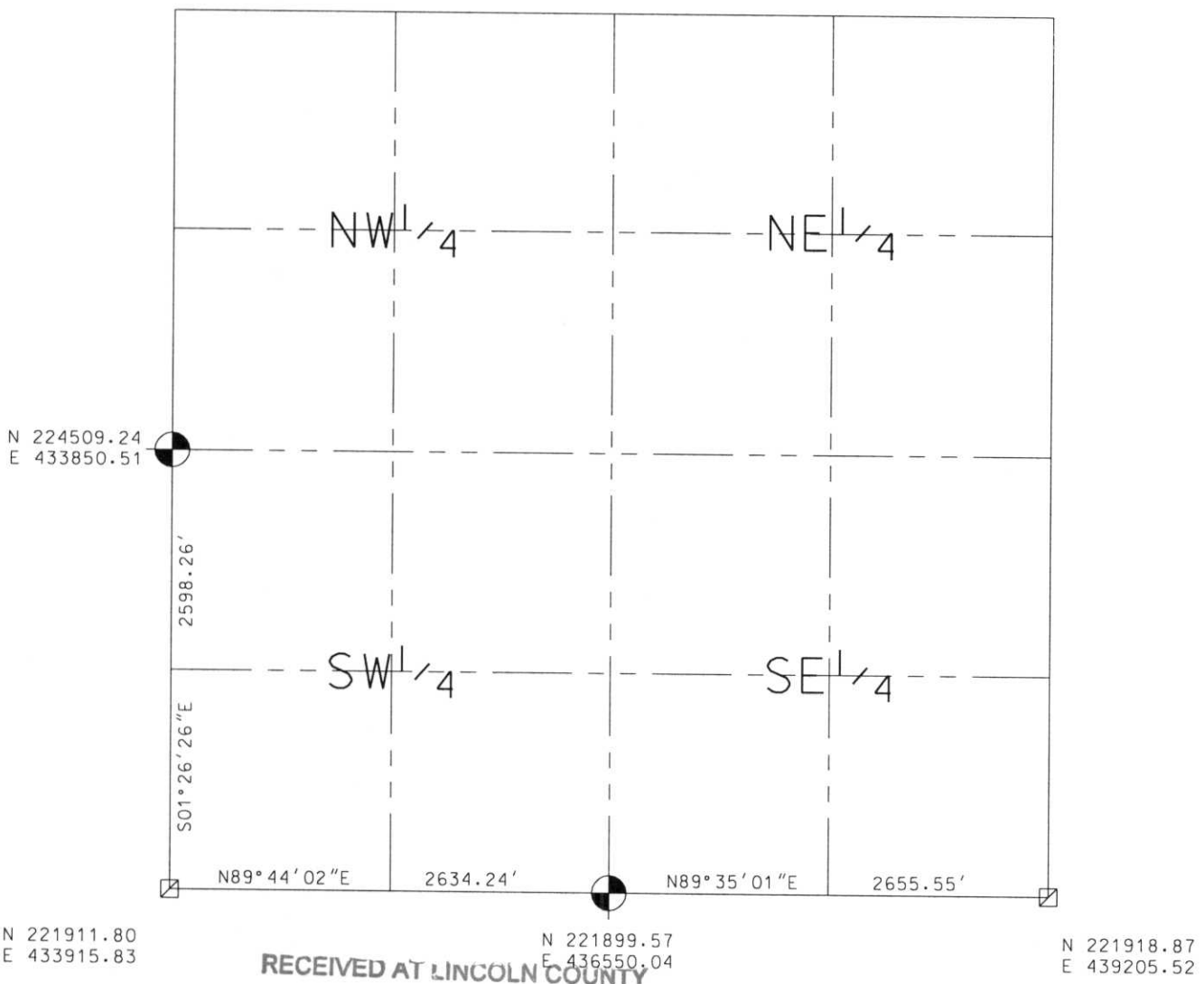
LINCOLN COUNTY SECTION SUMMARY

LEGEND

SECTION SUMMARY 5 SECTION 34N TOWNSHIP 8E RANGE

HARRISON
TOWN

- FOUND GRANITE MONUMENT
-  FOUND LINCOLN COUNTY MONUMENT
-  SET LINCOLN COUNTY MONUMENT
-  FOUND LANGLADE COUNTY MONUMENT



RECEIVED AT LINCOLN COUNTY
COURTHOUSE THIS 11TH DAY
OF December 20 02
Tony Dalko
LAND INFORMATION OFFICE

NOTES:
COORDINATES AND BEARINGS ARE REFERENCED TO THE LINCOLN COUNTY COORDINATE SYSTEM AS DEVELOPED BY THE WISCONSIN DEPARTMENT OF TRANSPORTATION AND WERE DETERMINED BY GPS OBSERVATIONS ON CONTROL POINTS AS SUPPLIED BY THE COUNTY SURVEYOR.

CERTIFIED CORRECT:




Dennis B. Roberts 12-06-02
Signature Date



Index No. AE-59

LINCOLN COUNTY SECTION SUMMARY

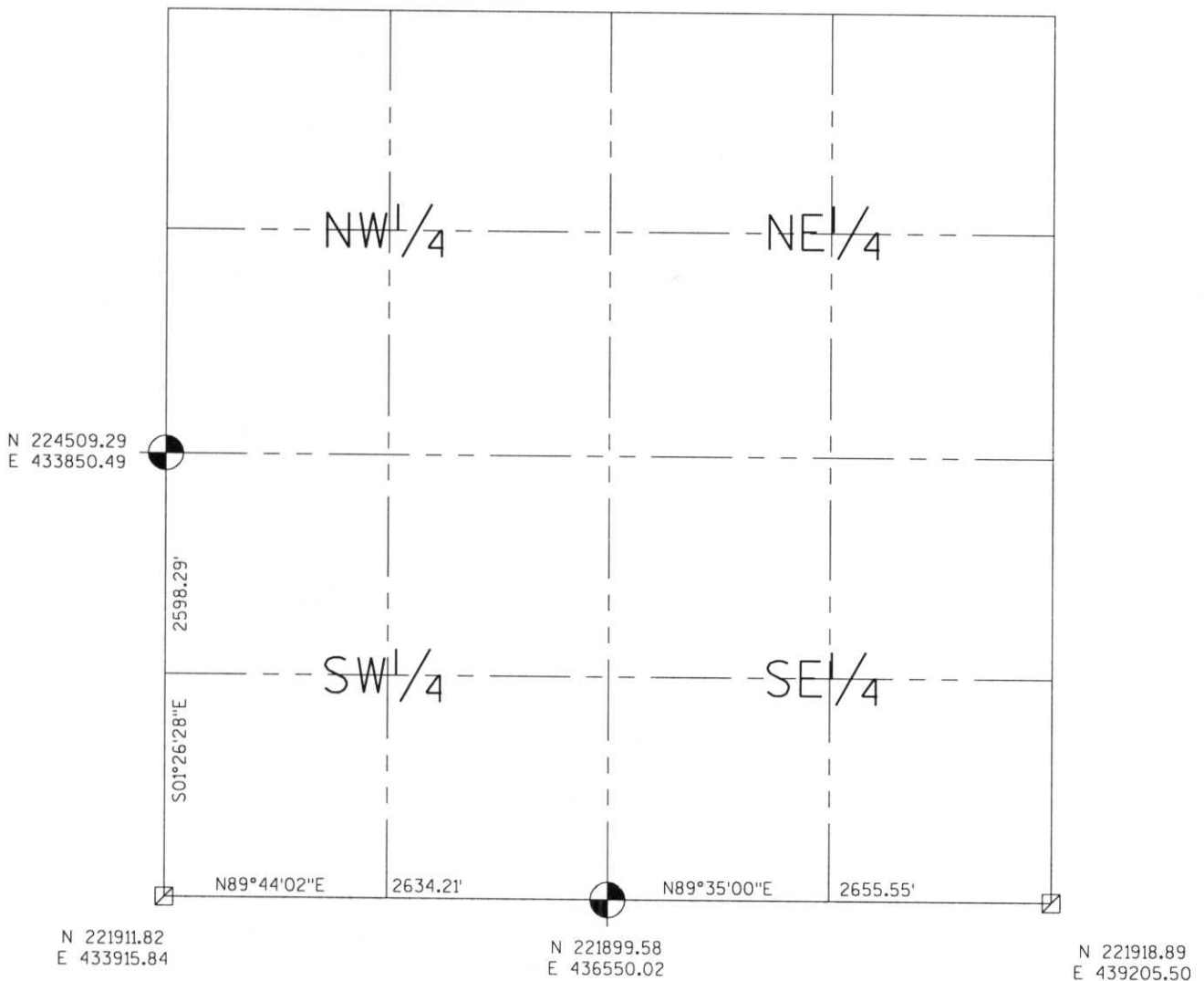
LEGEND

- FOUND GRANITE MONUMENT
-  FOUND LINCOLN COUNTY MONUMENT
-  SET LINCOLN COUNTY MONUMENT
-  FOUND LANGLADE COUNTY MONUMENT

SECTION SUMMARY 5 SECTION 34N TOWNSHIP 8E RANGE

HARRISON
TOWN

RECEIVED AT LINCOLN COUNTY
COURTHOUSE THIS 29th DAY
OF December 20 03
Tanya A. Rasmussen
LAND INFORMATION OFFICE



NOTES:
COORDINATES AND BEARINGS ARE REFERENCED TO THE LINCOLN COUNTY COORDINATE SYSTEM AS DEVELOPED BY THE WISCONSIN DEPARTMENT OF TRANSPORTATION AND WERE DETERMINED BY GPS OBSERVATIONS ON CONTROL POINTS AS SUPPLIED BY THE COUNTY SURVEYOR.



CERTIFIED CORRECT:

Jeffrey L. Demuth 12/22/03
Signature Date

Index No. A,E-5,9