




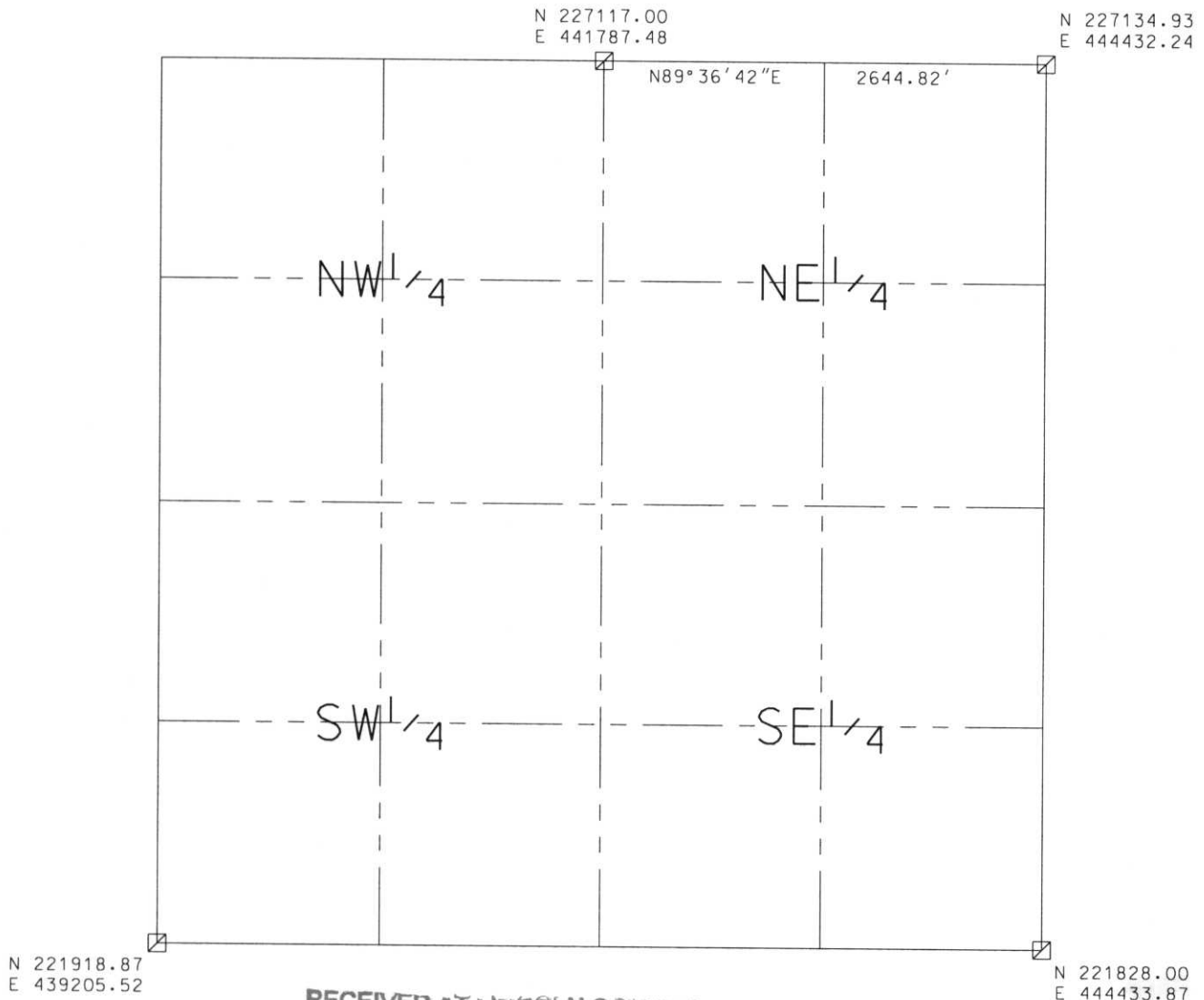
# LINCOLN COUNTY SECTION SUMMARY

LEGEND

- FOUND GRANITE MONUMENT
-  FOUND LINCOLN COUNTY MONUMENT
-  SET LINCOLN COUNTY MONUMENT
-  FOUND LANGLADE COUNTY MONUMENT

SECTION SUMMARY      4      SECTION      34N      TOWNSHIP      8E      RANGE

HARRISON  
TOWN



RECEIVED AT LINCOLN COUNTY  
COURTHOUSE THIS 11<sup>TH</sup> DAY  
OF December 20 02  
*Tony Dallen*  
LAND INFORMATION OFFICE

NOTES:  
COORDINATES AND BEARINGS ARE REFERENCED TO THE LINCOLN COUNTY  
COORDINATE SYSTEM AS DEVELOPED BY THE WISCONSIN DEPARTMENT  
OF TRANSPORTATION AND WERE DETERMINED BY GPS OBSERVATIONS ON  
CONTROL POINTS AS SUPPLIED BY THE COUNTY SURVEYOR.

CERTIFIED CORRECT:

*Dennis B. Roberts*  
Signature

12-06-02  
Date



Index No. AE-913

# LINCOLN COUNTY SECTION SUMMARY

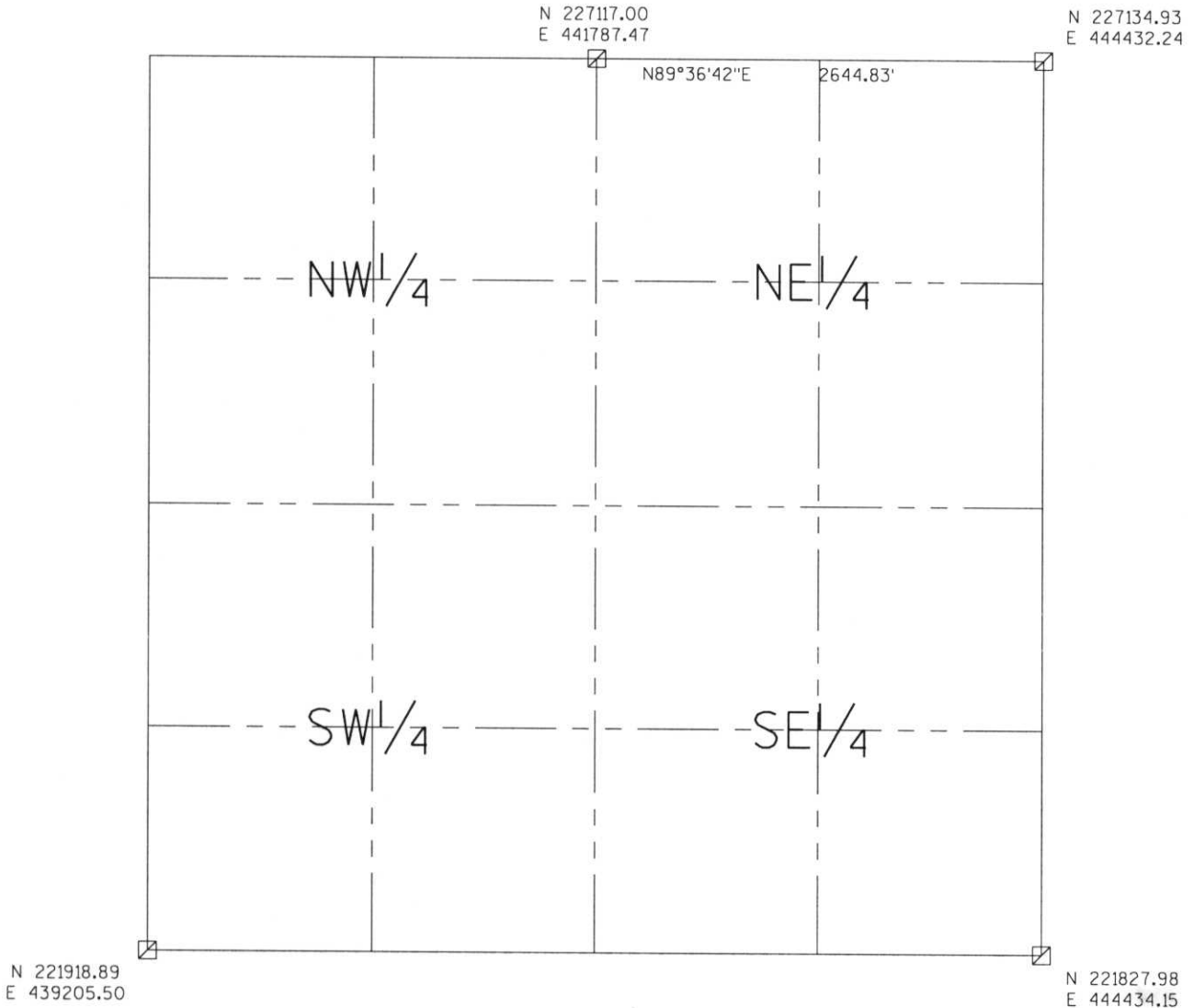
LEGEND

- FOUND GRANITE MONUMENT
- FOUND LINCOLN COUNTY MONUMENT
- SET LINCOLN COUNTY MONUMENT
- FOUND LANGLADE COUNTY MONUMENT

SECTION SUMMARY 4 SECTION 34N TOWNSHIP 8E RANGE

HARRISON  
TOWN

RECEIVED AT LINCOLN COUNTY  
COURTHOUSE THIS 29<sup>th</sup> DAY  
OF December 20 03  
Tanya A. Raamus  
LAND INFORMATION OFFICE



NOTES:  
COORDINATES AND BEARINGS ARE REFERENCED TO THE LINCOLN COUNTY COORDINATE SYSTEM AS DEVELOPED BY THE WISCONSIN DEPARTMENT OF TRANSPORTATION AND WERE DETERMINED BY GPS OBSERVATIONS ON CONTROL POINTS AS SUPPLIED BY THE COUNTY SURVEYOR.



CERTIFIED CORRECT:

  
 Signature \_\_\_\_\_ Date 12/22/03

Index No. A, E -- 9, 13