

LINCOLN COUNTY SECTION SUMMARY

LEGEND

- FOUND GRANITE MONUMENT
- FOUND LINCOLN COUNTY MONUMENT
- SET LINCOLN COUNTY MONUMENT
- FOUND LANGLADE COUNTY MONUMENT

SECTION
SUMMARY

3
SECTION

34N
TOWNSHIP

8E
RANGE

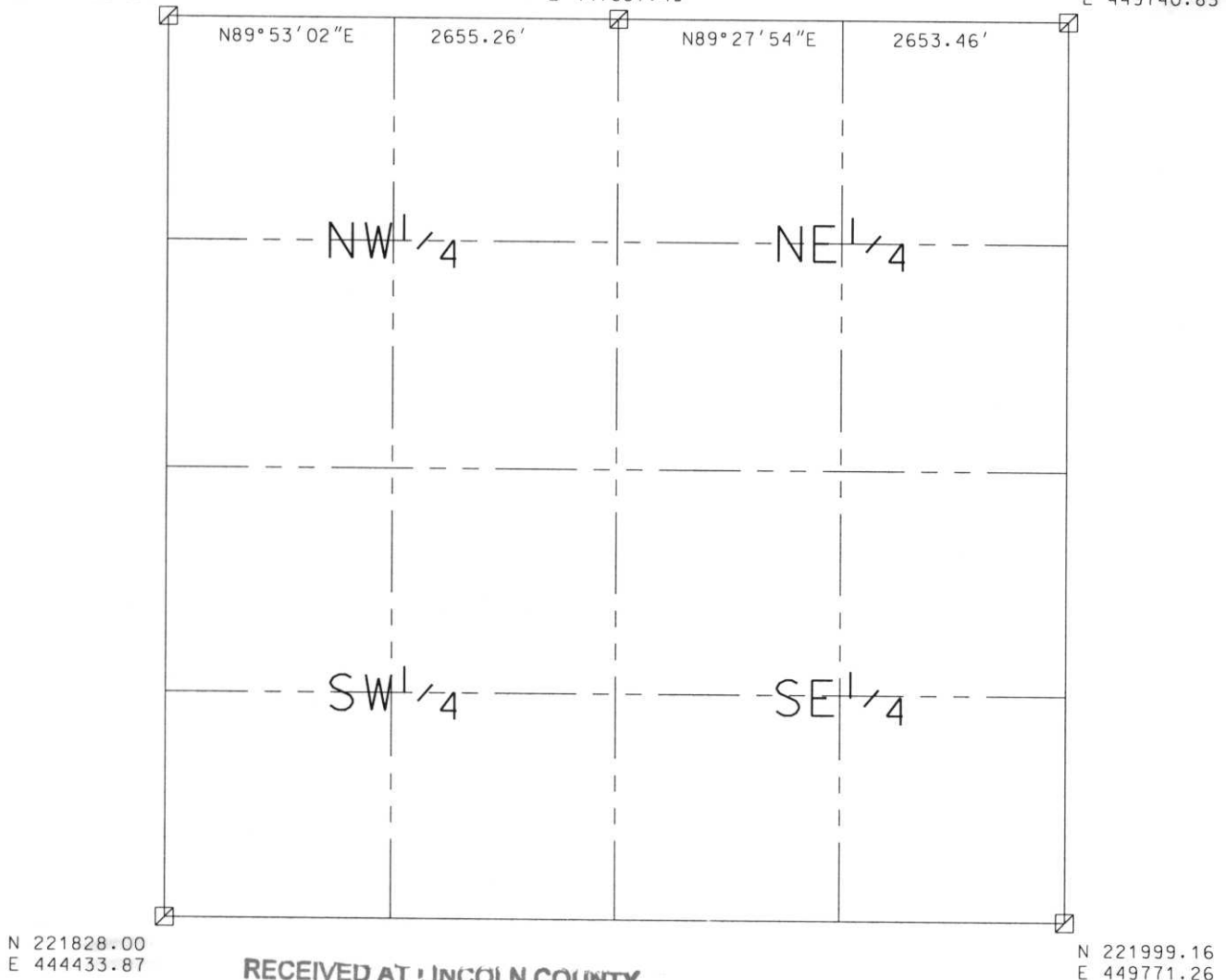
HARRISON
TOWN



N 227134.93
E 444432.24

N 227140.31
E 447087.49

N 227165.09
E 449740.83



RECEIVED AT LINCOLN COUNTY
COURTHOUSE THIS 11TH DAY
OF December 20 02
Tom Dalt
LAND INFORMATION OFFICE

NOTES:
COORDINATES AND BEARINGS ARE REFERENCED TO THE LINCOLN COUNTY
COORDINATE SYSTEM AS DEVELOPED BY THE WISCONSIN DEPARTMENT
OF TRANSPORTATION AND WERE DETERMINED BY GPS OBSERVATIONS ON
CONTROL POINTS AS SUPPLIED BY THE COUNTY SURVEYOR.

CERTIFIED CORRECT:

Dennis B. Roberts
Signature

12-06-02
Date



Index No. AE-1317

LINCOLN COUNTY SECTION SUMMARY

LEGEND

- FOUND GRANITE MONUMENT
- FOUND LINCOLN COUNTY MONUMENT
- SET LINCOLN COUNTY MONUMENT
- FOUND LANGLADE COUNTY MONUMENT

SECTION SUMMARY 3 SECTION 34N TOWNSHIP 8E RANGE

HARRISON
TOWN

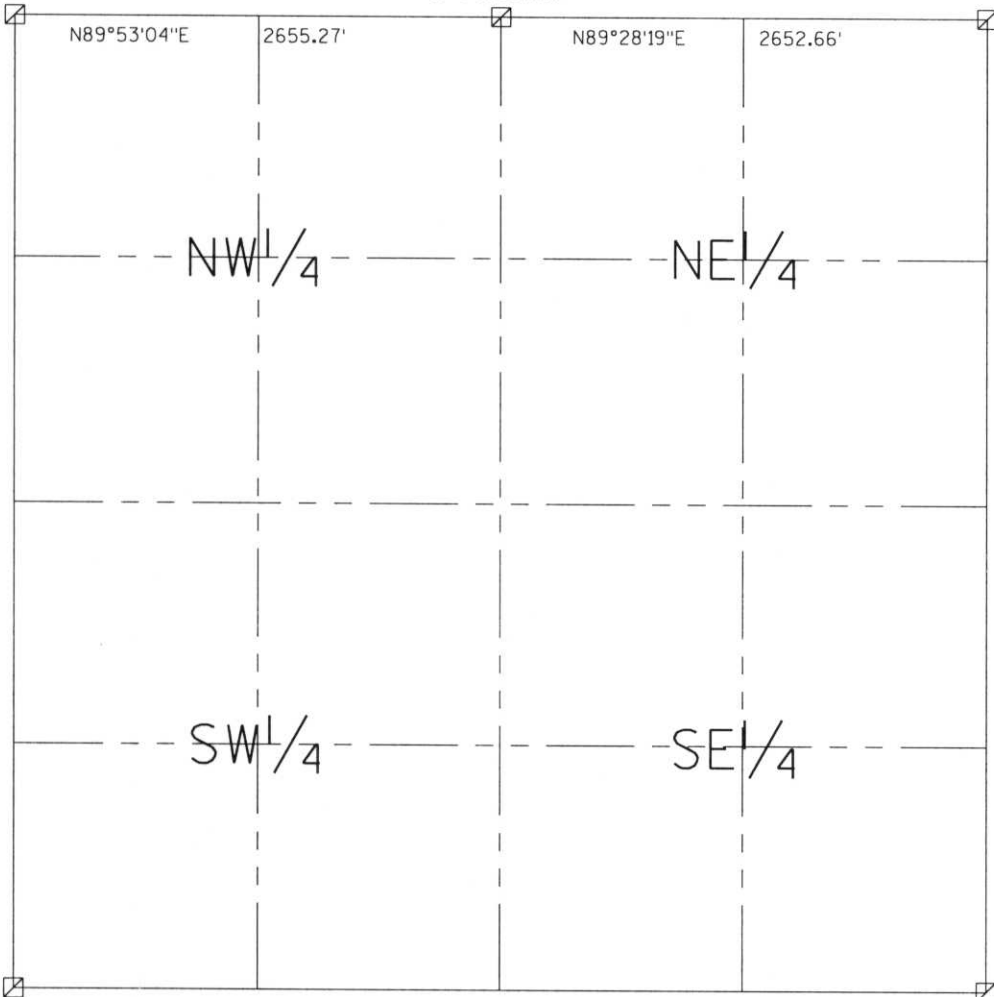
RECEIVED AT LINCOLN COUNTY
COURTHOUSE THIS 29th DAY
OF December 20 03
Tara A. Rauman
LAND INFORMATION OFFICE



N 227134.93
E 444432.24

N 227140.28
E 447087.50

N 227164.73
E 449740.05



N 221827.98
E 444434.15

N 221999.13
E 449771.27

NOTES:
COORDINATES AND BEARINGS ARE REFERENCED TO THE LINCOLN COUNTY COORDINATE SYSTEM AS DEVELOPED BY THE WISCONSIN DEPARTMENT OF TRANSPORTATION AND WERE DETERMINED BY GPS OBSERVATIONS ON CONTROL POINTS AS SUPPLIED BY THE COUNTY SURVEYOR.



CERTIFIED CORRECT:

Jeffrey L. Demuth
Signature

12/22/03
Date

Index No. A/E-13,17