

LINCOLN COUNTY SECTION SUMMARY

LEGEND

- ☐ FOUND GRANITE MONUMENT
- ⊕ FOUND LINCOLN COUNTY MONUMENT
- ⊗ SET LINCOLN COUNTY MONUMENT
- ⊙ FOUND LANGLADE COUNTY MONUMENT

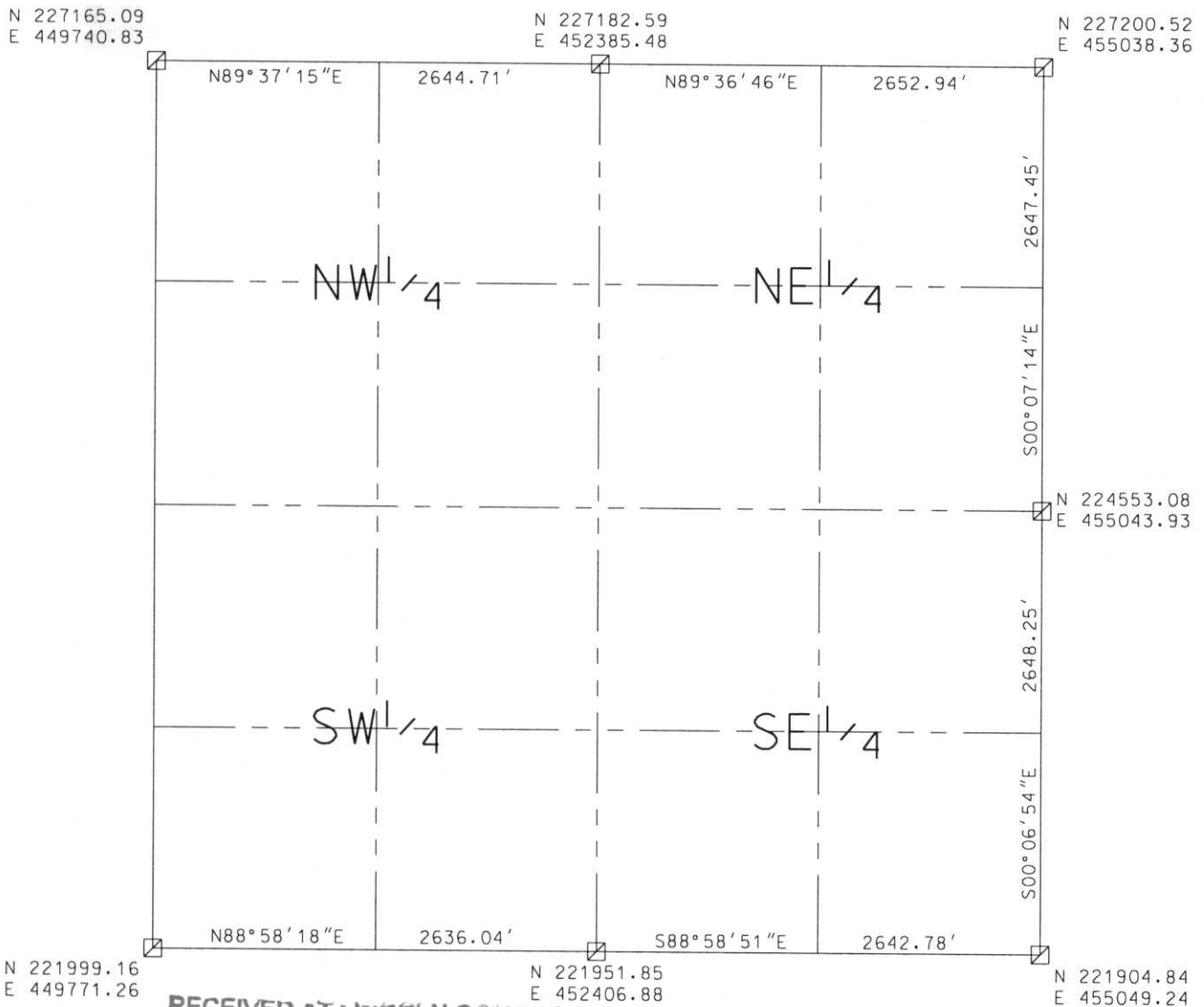
SECTION SUMMARY

2
SECTION

34N
TOWNSHIP

8E
RANGE

HARRISON
TOWN



RECEIVED AT LINCOLN COUNTY
 COURTHOUSE THIS 11TH DAY
 OF December 20 02
Zany Walsh
 LAND INFORMATION OFFICE

NOTES:
 COORDINATES AND BEARINGS ARE REFERENCED TO THE LINCOLN COUNTY
 COORDINATE SYSTEM AS DEVELOPED BY THE WISCONSIN DEPARTMENT
 OF TRANSPORTATION AND WERE DETERMINED BY GPS OBSERVATIONS ON
 CONTROL POINTS AS SUPPLIED BY THE COUNTY SURVEYOR.

CERTIFIED CORRECT:

Dennis B. Roberts
 Signature

12-06-02
 Date



Index No. AE-1721

LINCOLN COUNTY SECTION SUMMARY

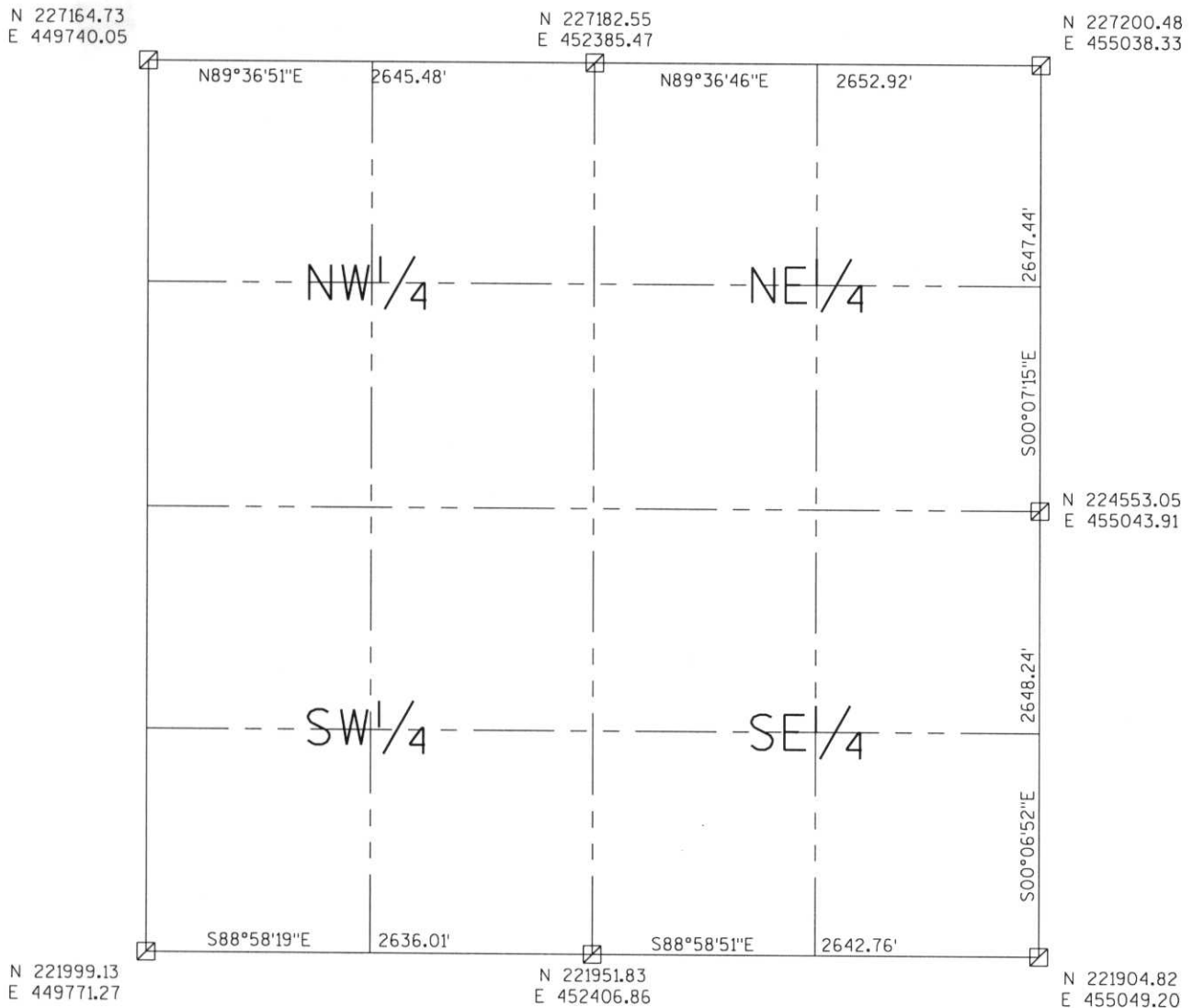
LEGEND

- FOUND GRANITE MONUMENT
- FOUND LINCOLN COUNTY MONUMENT
- SET LINCOLN COUNTY MONUMENT
- FOUND LANGLADE COUNTY MONUMENT

SECTION SUMMARY 2 SECTION 34N TOWNSHIP 8E RANGE

HARRISON
TOWN

RECEIVED AT LINCOLN COUNTY
COURTHOUSE THIS 29th DAY
OF December 20 03
Tanya A. Reisman
LAND INFORMATION OFFICE



NOTES:
 COORDINATES AND BEARINGS ARE REFERENCED TO THE LINCOLN COUNTY
 COORDINATE SYSTEM AS DEVELOPED BY THE WISCONSIN DEPARTMENT
 OF TRANSPORTATION AND WERE DETERMINED BY GPS OBSERVATIONS ON
 CONTROL POINTS AS SUPPLIED BY THE COUNTY SURVEYOR.



CERTIFIED CORRECT:

Jeffrey L. Demuth Signature 12/22/03 Date

Index No. A.E.-17,221