

LINCOLN COUNTY SECTION SUMMARY

LEGEND

- FOUND GRANITE MONUMENT
- FOUND LINCOLN COUNTY MONUMENT
- SET LINCOLN COUNTY MONUMENT
- FOUND LANGLADE COUNTY MONUMENT

SECTION
SUMMARY

1
SECTION

34N
TOWNSHIP

8E
RANGE

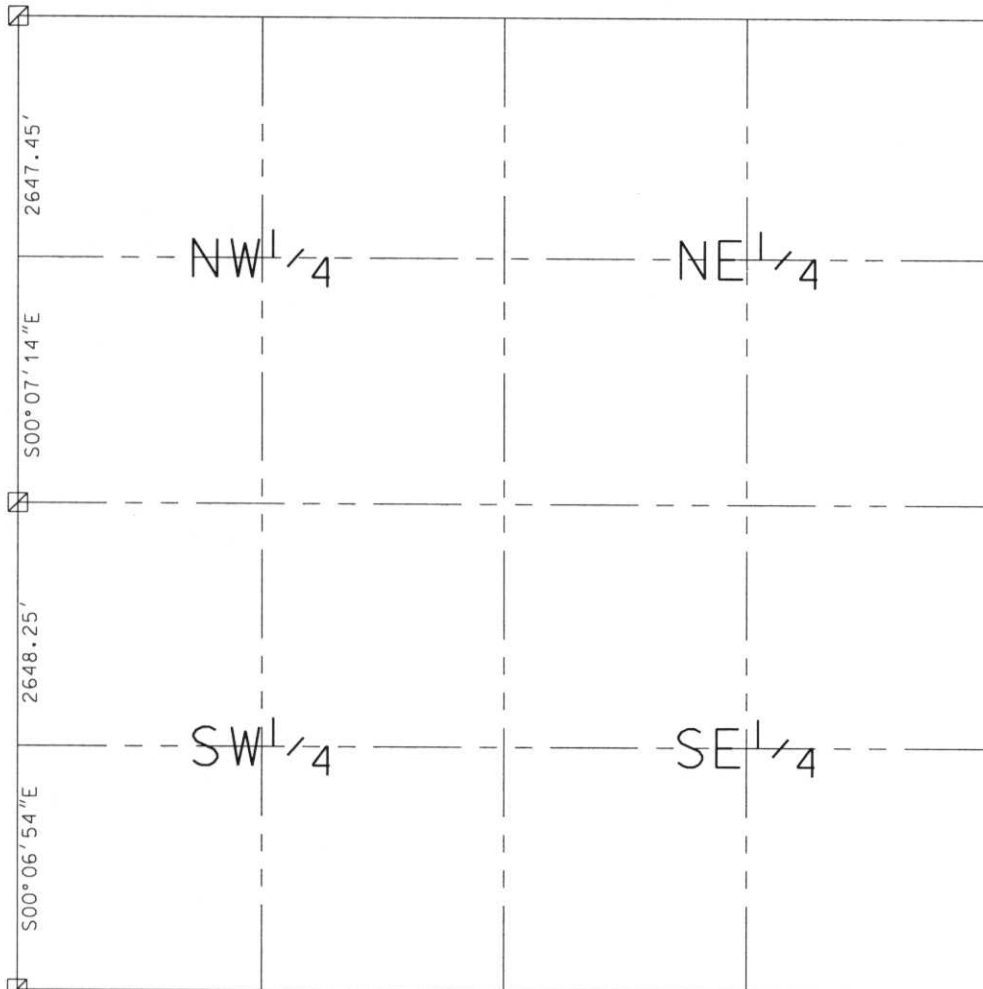
HARRISON
TOWN



N 227200.52
E 455038.36

N 224553.08
E 455043.93

N 221904.84
E 455049.24



**RECEIVED AT LINCOLN COUNTY
COURTHOUSE THIS 11TH DAY
OF December 20 02
Tony Dalk
LAND INFORMATION SERVICE**

NOTES:
COORDINATES AND BEARINGS ARE REFERENCED TO THE LINCOLN COUNTY
COORDINATE SYSTEM AS DEVELOPED BY THE WISCONSIN DEPARTMENT
OF TRANSPORTATION AND WERE DETERMINED BY GPS OBSERVATIONS ON
CONTROL POINTS AS SUPPLIED BY THE COUNTY SURVEYOR.

CERTIFIED CORRECT:

Dennis B. Roberts
Signature

12-06-02
Date



Index No. AE-2125