

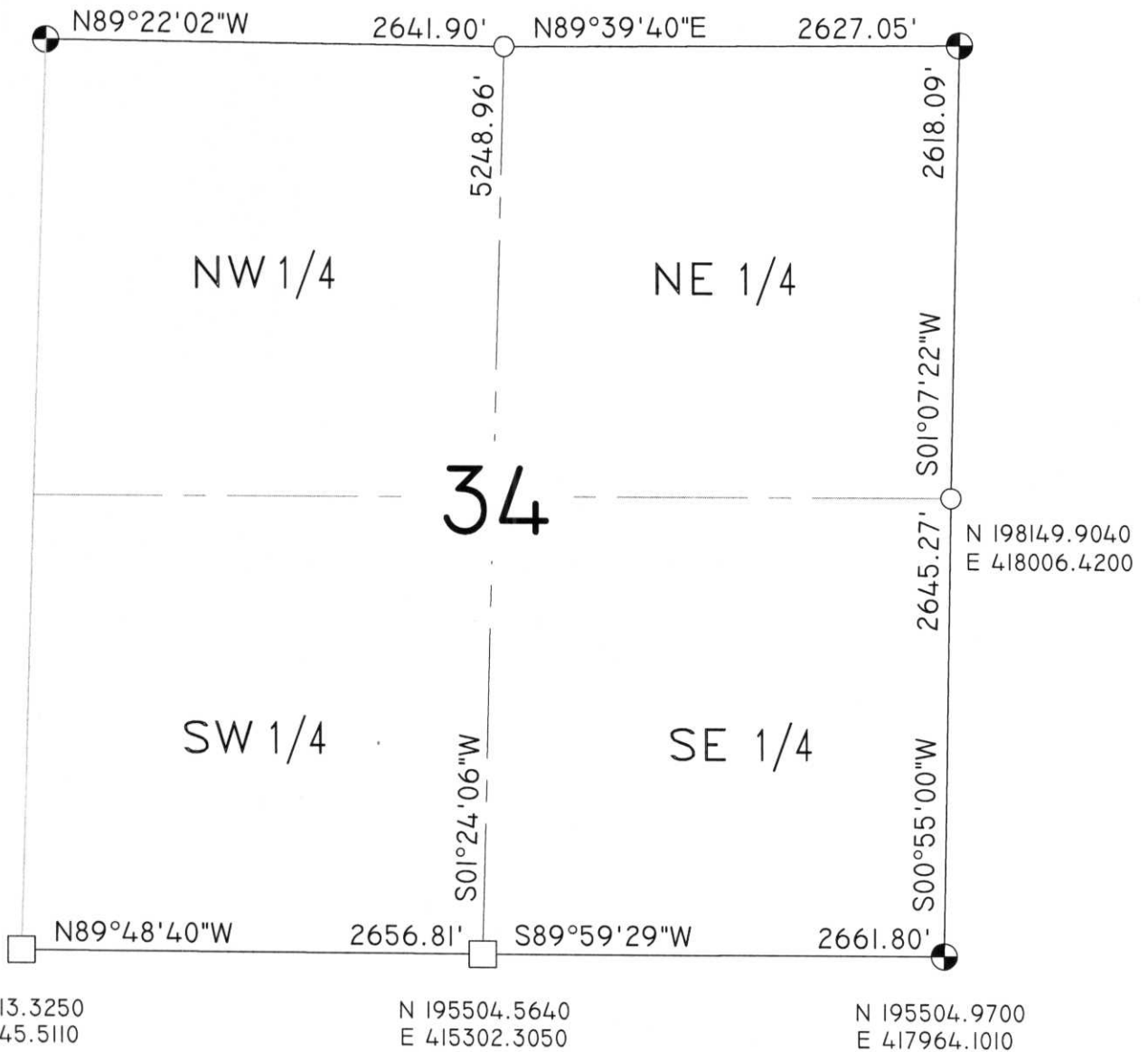


SECTION SUMMARY  
 34 - 34 - 7  
 Section Township Range  
 SKANAWAN  
 Town

N 200781.1300  
 E 412788.9778

N 200751.9490  
 E 415430.7130

N 200767.4890  
 E 418057.7150



N 195513.3250  
 E 412645.5110

N 195504.5640  
 E 415302.3050

N 195504.9700  
 E 417964.1010

COORDINATES ARE REFERENCED TO THE LINCOLN COUNTY COORDINATE SYSTEM AS DEVELOPED BY THE WISCONSIN DEPARTMENT OF TRANSPORTATION AND ARE BASED ON GPS OBSERVATIONS TO CONTROL POINTS AS SUPPLIED BY LINCOLN COUNTY.

RECEIVED BY LINCOLN COUNTY  
 SURVEYOR THIS 6<sup>TH</sup> DAY  
 OF January 20 06  
 Tony Dahl  
 COUNTY SURVEYOR

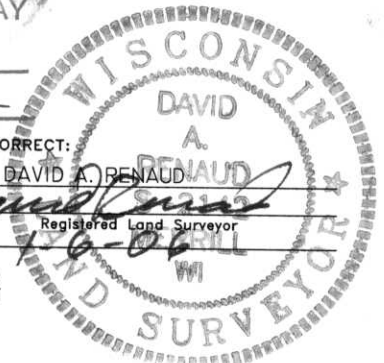
- LEGEND**
- ⊙ - Lincoln County Monument (Berntsen)
  - - Stone Monument
  - - 1" Iron Pipe
  - - 1" Iron Bar
  - △ - Mag Nail

CERTIFIED CORRECT:

DAVID A. BENAUD

Registered Land Surveyor

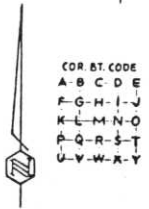
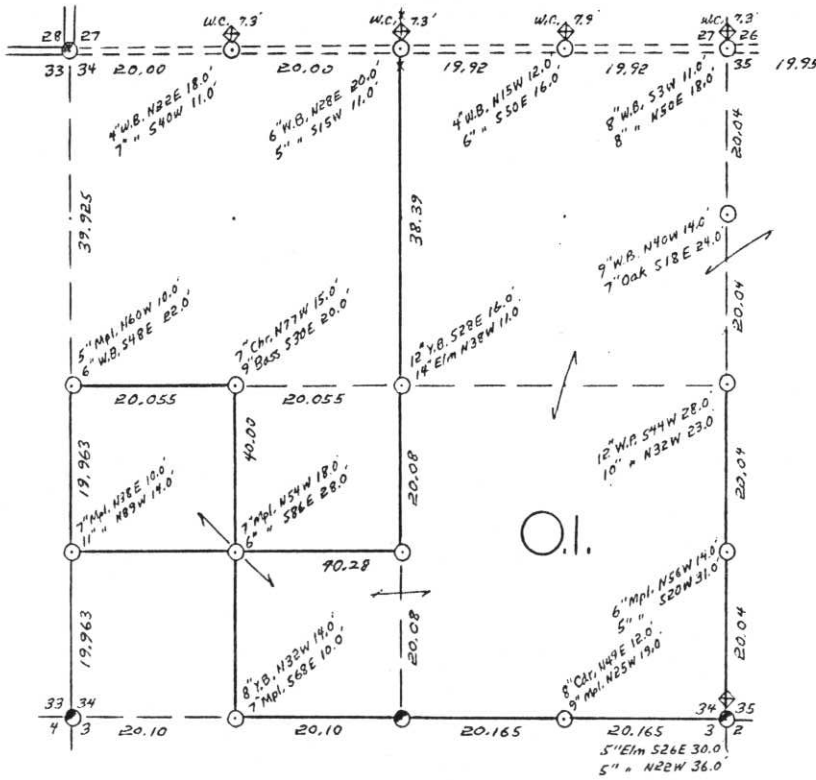
DATE:



R.E.I. 4080 N. 20th AVE WAUSAU, WI 54401 (715)675-9784

1-13-17

SEC. 34, T. 34 N., R. 7 E.,  
LINCOLN COUNTY, WIS.



COR. ST. CODE  
A-B-C-D-E  
F-G-H-I-J  
K-L-M-N-O  
P-Q-R-S-T  
U-V-W-X-Y

SCALE:  
0 5 10 20 CHAINS  
0 330 660 1320 FEET

LEGEND: CORNERS & LINES  
○ IRON PIPE OR CAP    --- BLAZED - PAINTED  
⊗ CONCRETE            --- BLAZED  
⊕ POST                 --- APPR. PAINTED  
△ STAKE                --- RANDOM  
+ SPIKE  
⊙ BY OTHERS

Surveyed 1964

OWENS-ILLINOIS  
TOMAHAWK WISCONSIN  
FOREST PRODUCTS DIVISION

Ownership Boundary Survey  
DRAWN BY W. H. Stuth  
DATE 1/12/87

Prepared By W. H. Stuth 3/6/87

B FILE

0-4:9-13

STATEMENT Transit & Chain Surv. using corners  
Found

RECORDS EXAMINED \_\_\_\_\_ DWG. NO. \_\_\_\_\_

Org. Surv.  
County

Received from:  
Nekoosa Papers Inc.  
Forest District Office  
Menomonie, WI  
54548

LOCAL CONTACTS \_\_\_\_\_

REMARKS \_\_\_\_\_

RECEIVED AT LINCOLN COUNTY  
COURTHOUSE THIS 18 DAY  
OF April 19 89.

Pat Preble  
TAX DESCRIPTION OFFICE