





# LINCOLN COUNTY SECTION SUMMARY

## LEGEND

-  Berntsen Survey Nail Set
-  3/4" x 24" Iron Rebar Set  
Weighing 1.50 lbs/lin ft.
-  Lincoln County Berntsen Monument found
-  6" by 6" Granite Stone Found

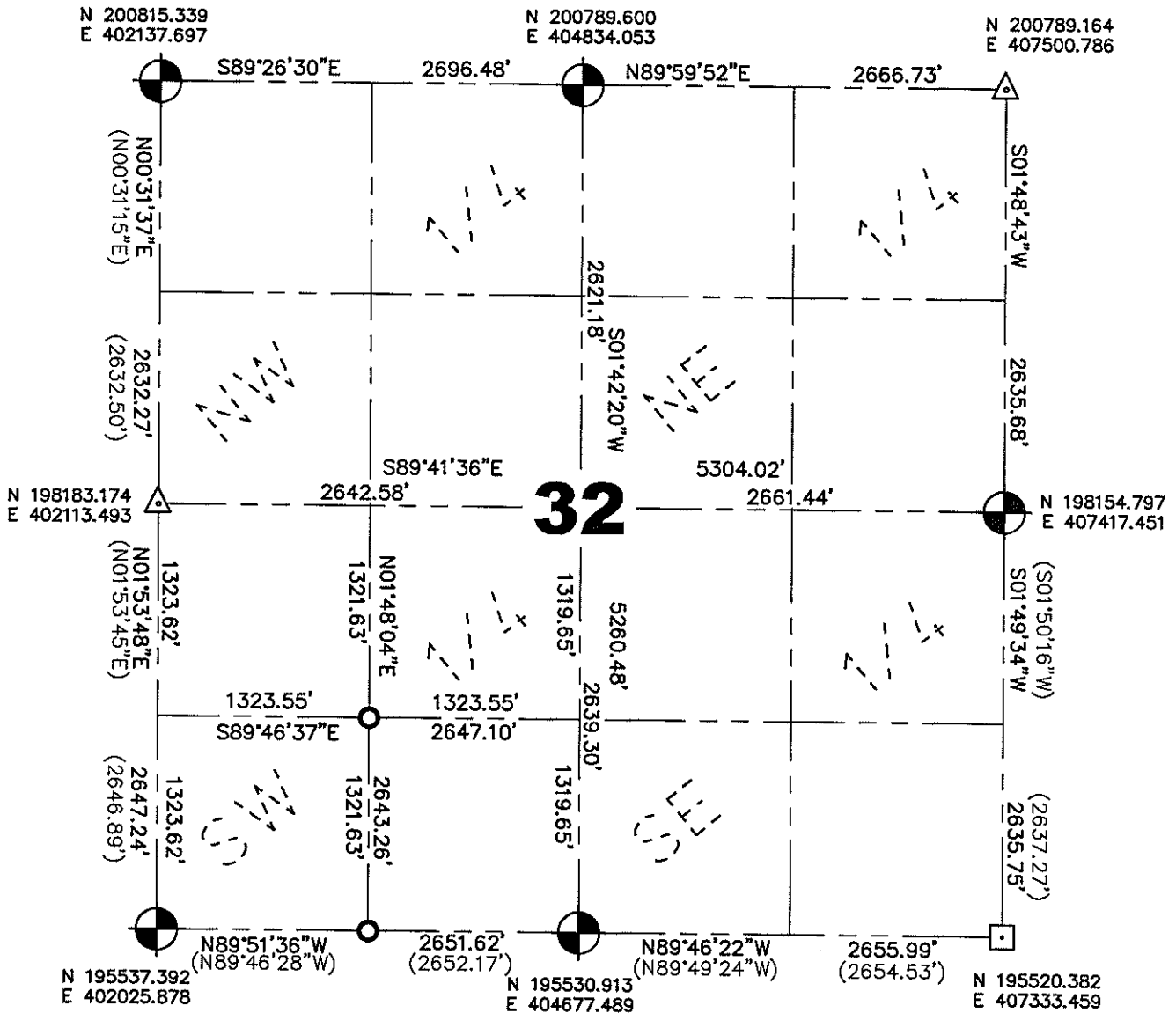
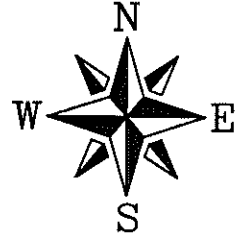
(45.67') Record Dimensions per REI Map No. L414A

Section  
Summary

**32** — **34N** — **7E**  
Section Township Range  
**Skanawan**  
Town

Note:  
Coordinates shown  
were based on our  
survey using the  
published  
coordinates by REI  
for the East 1/4  
Corner, NE Corner,  
North 1/4 Corner  
and NW Corner  
shown.

Proj. 735

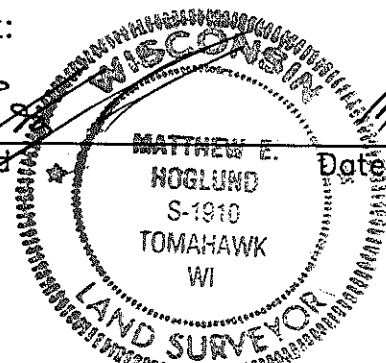


Coordinates and bearings are referenced to the Lincoln County Coordinate System as developed by the Wisconsin Department of Transportation and were determined by GPS observations on control points as supplied by Lincoln County Land Information Office or by manual survey methods, to the best of my knowledge and belief.

Certified Correct:

*Matthew E. Hoglund*  
Matthew E. Hoglund  
Date 11/3/2008

RECEIVED BY LINCOLN COUNTY  
SURVEYOR THIS 4<sup>TH</sup> DAY  
OF November 20 08  
*Tony Dahl*  
COUNTY SURVEYOR



Sec. 32



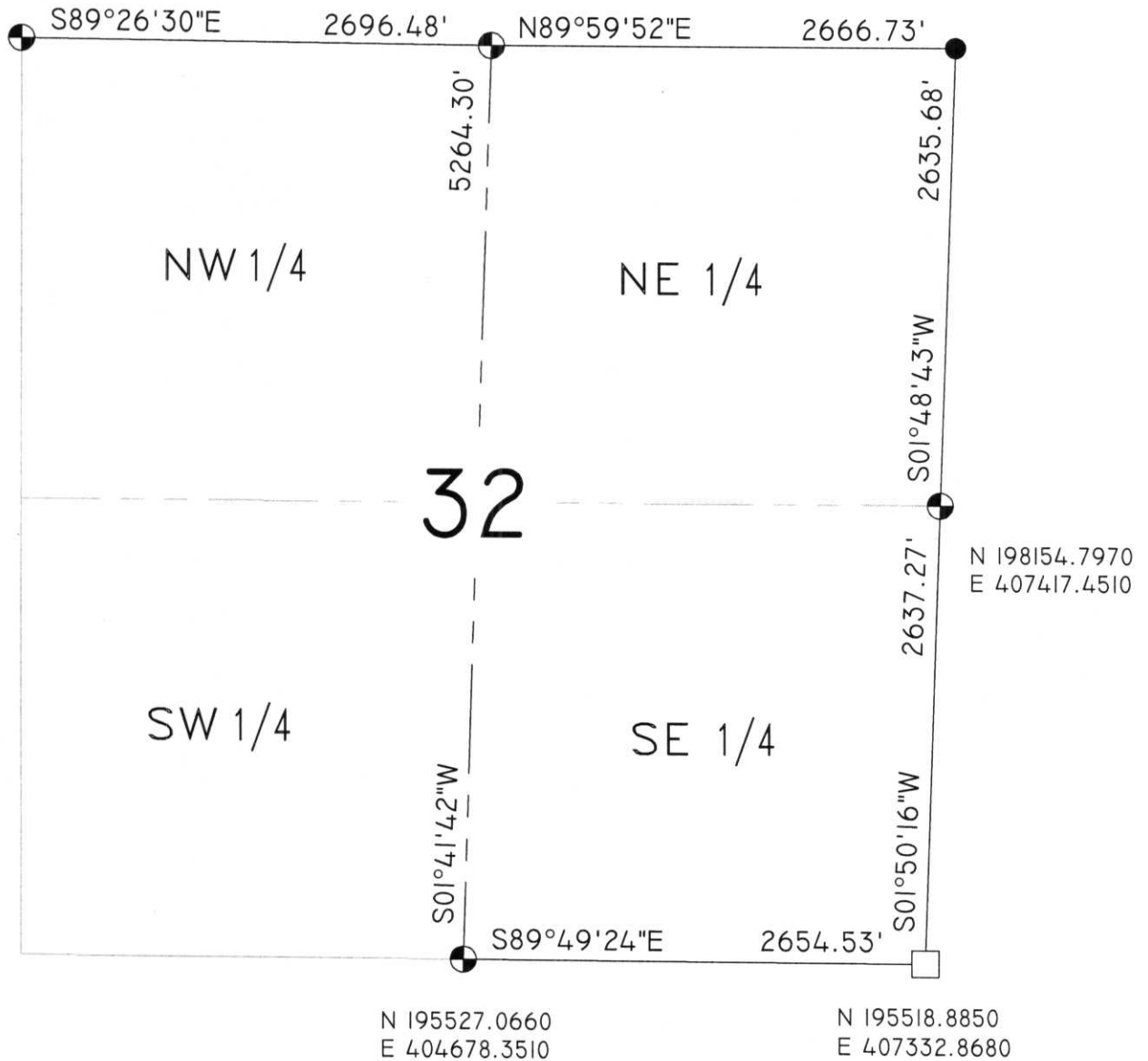
SECTION SUMMARY

32	-	34	-	7
Section		Township		Range
SKANAWAN				
Town				

N 200815.3390  
E 402137.6970

N 200789.0603  
E 404834.0533

N 200789.1640  
E 407500.7860



COORDINATES ARE REFERENCED TO THE LINCOLN COUNTY COORDINATE SYSTEM AS DEVELOPED BY THE WISCONSIN DEPARTMENT OF TRANSPORTATION AND ARE BASED ON GPS OBSERVATIONS TO CONTROL POINTS AS SUPPLIED BY LINCOLN COUNTY.

- LEGEND**
- ⊙ - Lincoln County Monument (Berntsen)
  - - Stone Monument
  - - 1" Iron Pipe
  - - 1" Iron Bar
  - ◐ - Aluminum Monument

RECEIVED BY LINCOLN COUNTY SURVEYOR THIS 6<sup>TH</sup> DAY OF January 20 06

*Tony Dalko*  
COUNTY SURVEYOR

CERTIFIED CORRECT:  
DAVID A. RENAUD  
*David Renaud*  
Registered Land Surveyor



R.E.I. 4080 N. 20th AVE WAUSAU, WI 54401 (715)675-9784

6-5:1-11