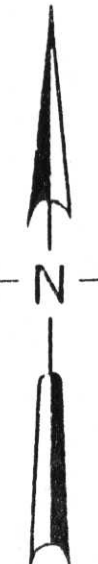
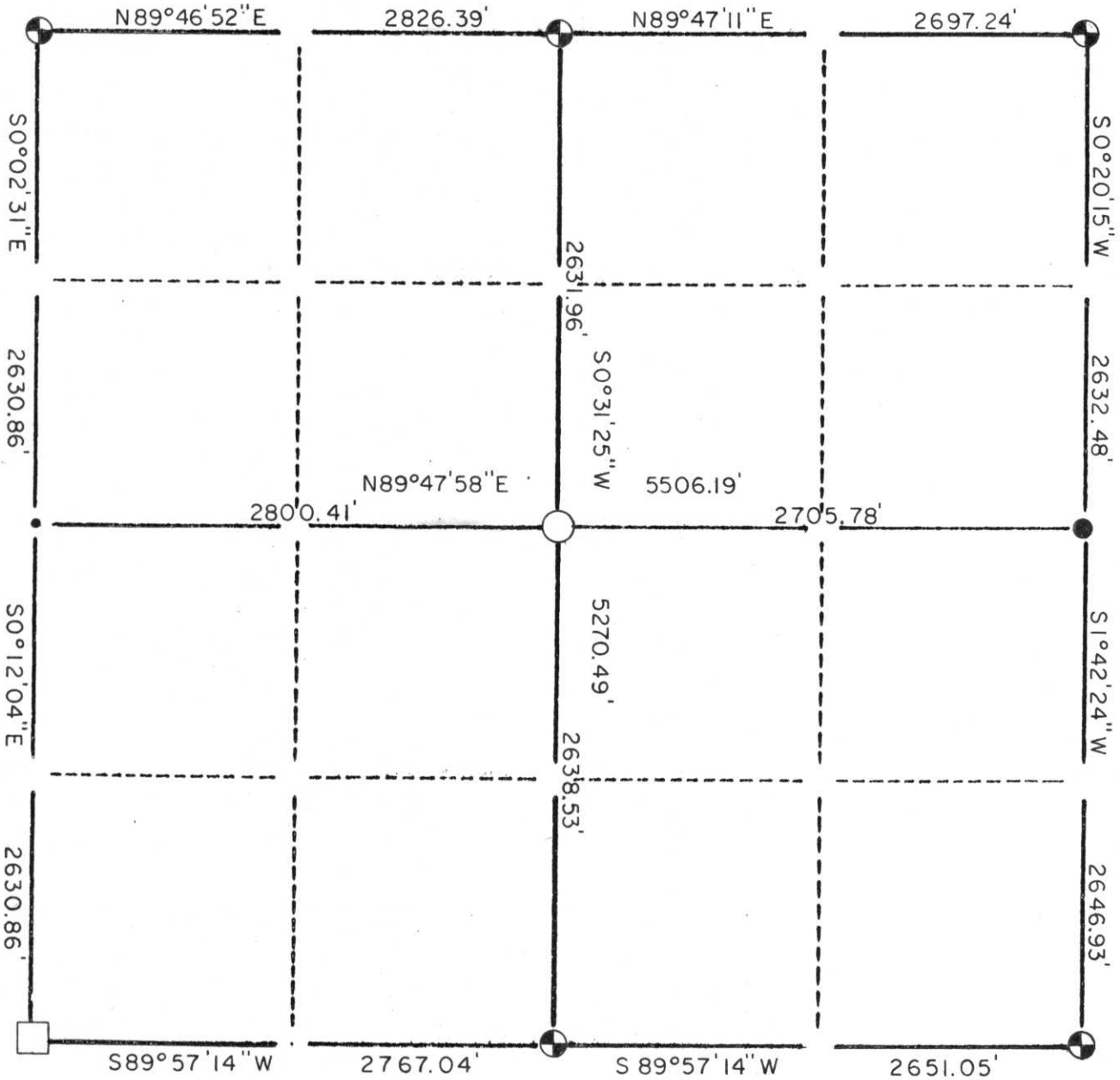


LINCOLN COUNTY

SECTION SUMMARY

31 - 34 - 7
Section Town Range
SKANAWAN
Township



LEGEND

- ⊕ - LINCOLN COUNTY BERNTSEN MONUMENT
- - Stone or Concrete Monument
- - 2" Iron Pipe
- - 1" Iron Pipe
- - Iron Bar
- - NAIL

CERTIFIED CORRECT:
Edwin R. Abendroth
 S-798
 Registered Land Surveyor
 DATE: *Oct. 6, 1998*



RECEIVED AT LINCOLN COUNTY
 COURTHOUSE THIS 7th DAY
 OF Oct 19 98
Pat Priebe
 TAX DESCRIPTION OFFICE

0-9: 1-5

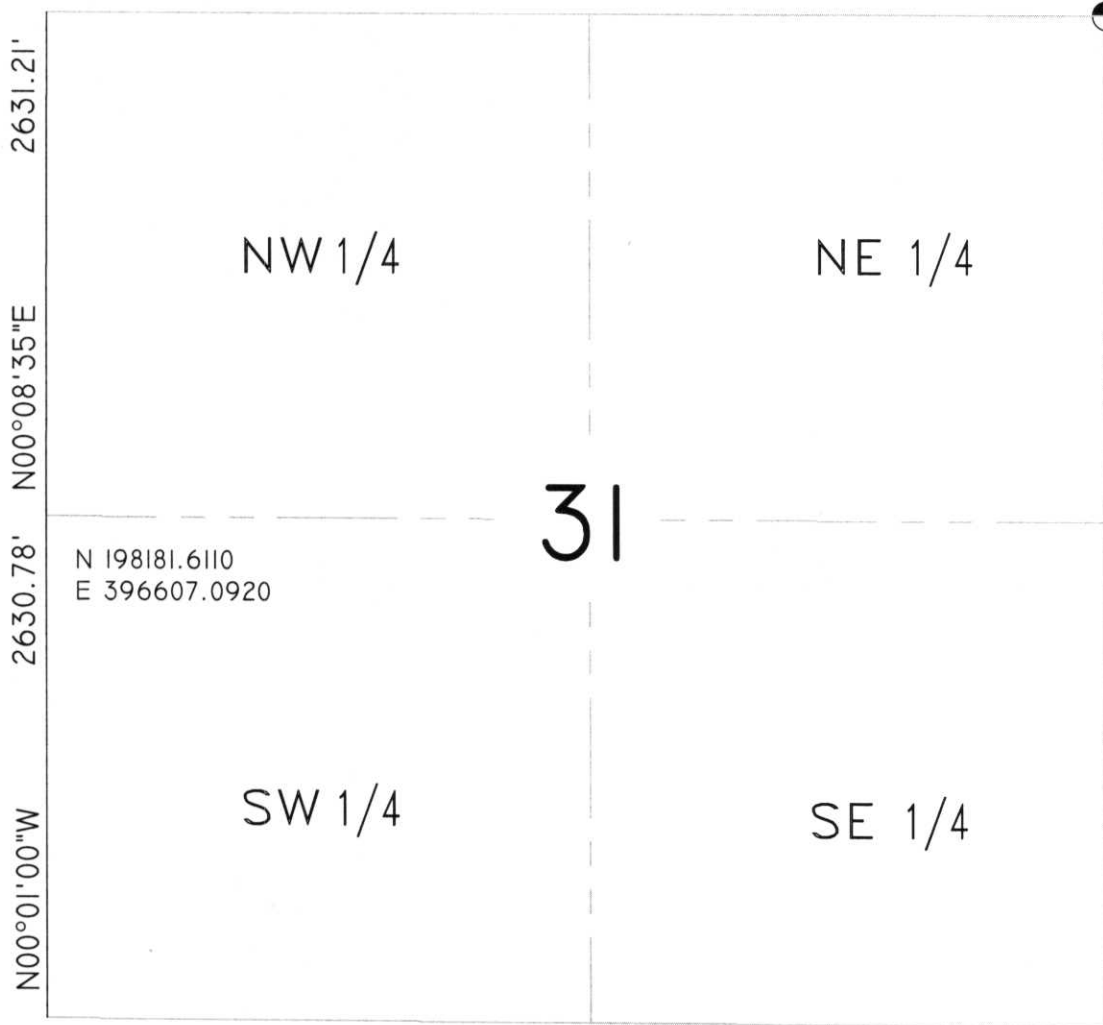


SECTION
SUMMARY

31 - 34 - 7
Section Township Range
SKANAWAN
Town

N 200812.8110
E 396613.6640

N 200815.3390
E 402137.6970

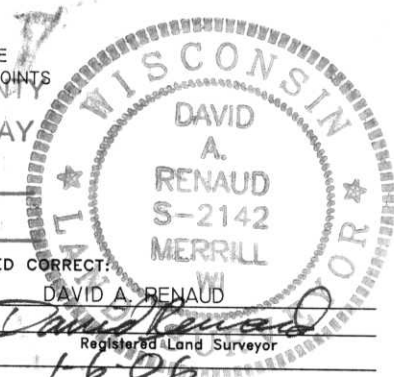


N 195550.8340
E 396607.8510

COORDINATES ARE REFERENCED TO THE LINCOLN COUNTY COORDINATE SYSTEM AS DEVELOPED BY THE WISCONSIN DEPARTMENT OF TRANSPORTATION AND ARE BASED ON GPS OBSERVATIONS TO CONTROL POINTS AS SUPPLIED BY LINCOLN COUNTY.

- LEGEND**
- ⊙ - Lincoln County Monument (Berntsen)
 - - Stone or Concrete Monument
 - - 1" Iron Pipe
 - - 1" Iron Bar
 - ⊙ - Aluminum Monument

RECEIVED BY LINCOLN COUNTY
SURVEYOR THIS 6TH DAY
OF January 20 06
Tony Deller
COUNTY SURVEYOR



CERTIFIED CORRECT:
David A. Renaud
Registered Land Surveyor
DATE: 1-6-06

R.E.I. 4080 N. 20th AVE WAUSAU, WI 54401 (715)675-9784

5-1:1-1