

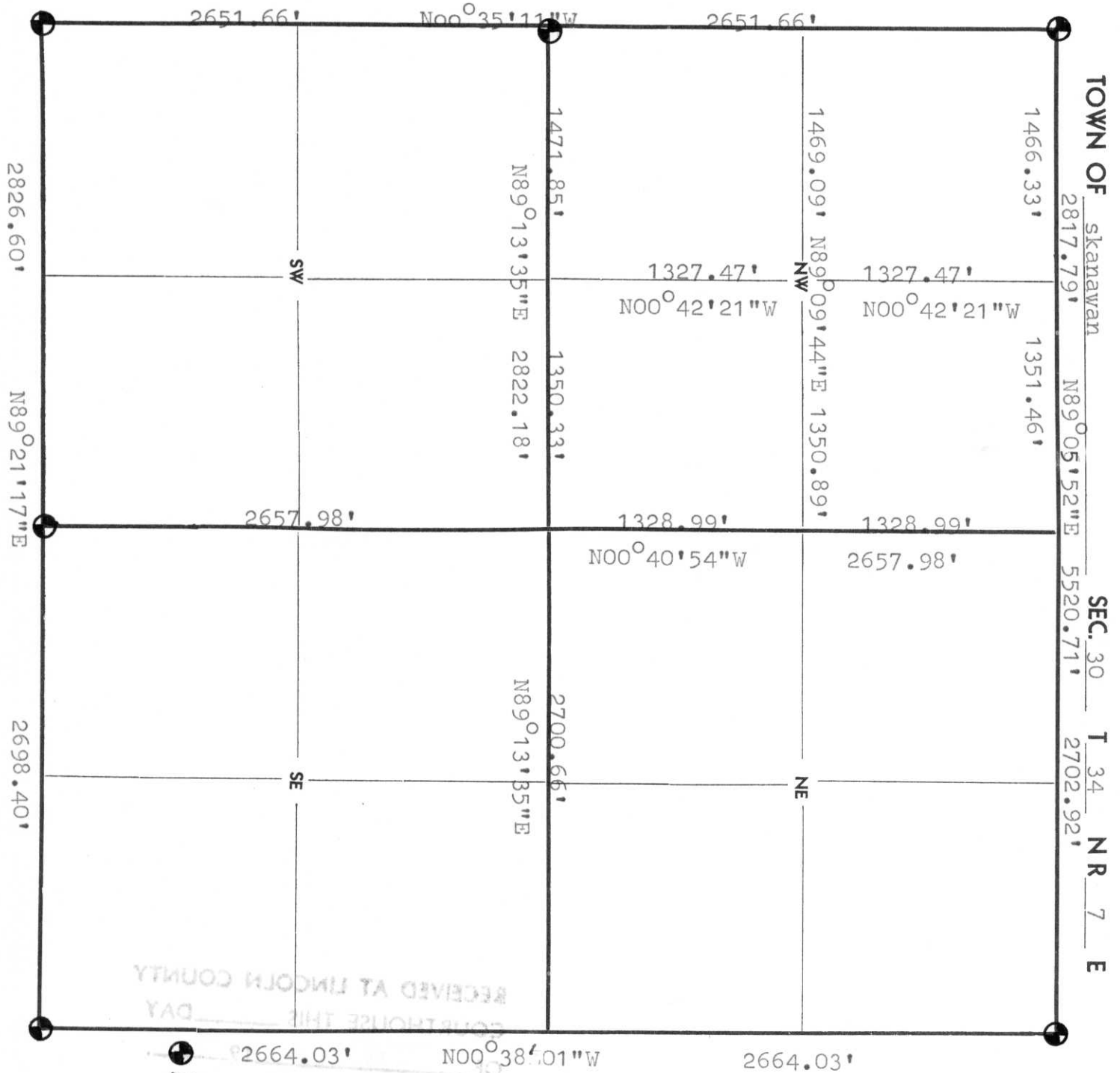
*Leonard L. Lampert*



Auth            tion # 38

**CONSULTING ENGINEER**

220 Greenbriar Avenue, Park Ridge  
Stevens Point, Wisconsin 54481 • Telephone 344-4408 Area Code 715



RECEIVED AT LINCOLN COUNTY  
 DAY  
 TAX DESCRIPTION  
 OFFICE  
 Berntsen

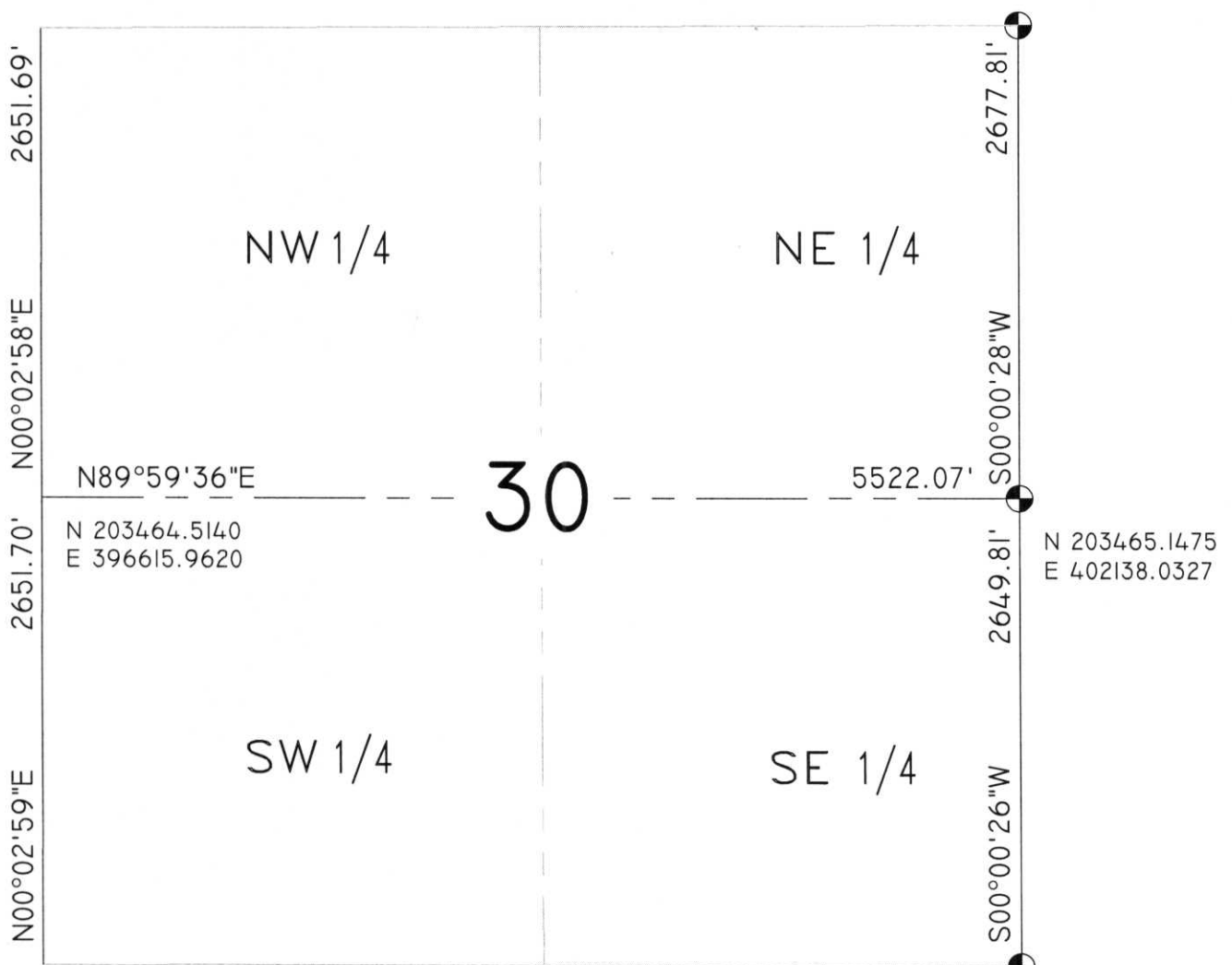
Q-U:1-5



SECTION SUMMARY  
 30 - 34 - 7  
 Section Township Range  
 SKANAWAN  
 Town

N 206116.2000  
 E 396618.2470

N 206142.9620  
 E 402138.3970

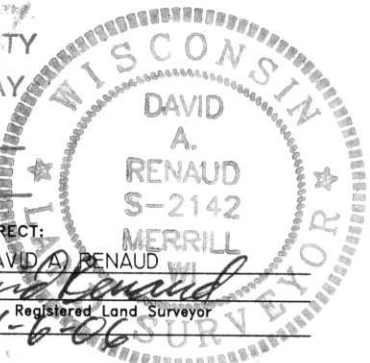


N 200812.8110  
 E 396613.6640

N 200815.3390  
 E 402137.6970

COORDINATES ARE REFERENCED TO THE LINCOLN COUNTY COORDINATE SYSTEM AS DEVELOPED BY THE WISCONSIN DEPARTMENT OF TRANSPORTATION AND ARE BASED ON GPS OBSERVATIONS TO CONTROL POINTS AS SUPPLIED BY LINCOLN COUNTY.

RECEIVED BY LINCOLN COUNTY  
 SURVEYOR THIS 6<sup>TH</sup> DAY  
 OF January 20 06  
 Tony Wall  
 COUNTY SURVEYOR



- LEGEND**
- - Lincoln County Monument (Berntsen)
  - - Stone or Concrete Monument
  - - 1" Iron Pipe
  - - 1" Iron Bar
  - - Aluminum Monument

CERTIFIED CORRECT:  
 DAVID A. RENAUD  
 Registered Land Surveyor  
 DATE: 1-6-06

R.E.I. 4080 N. 20th AVE WAUSAU, WI 54401 (715)675-9784

Q-11-1-5