

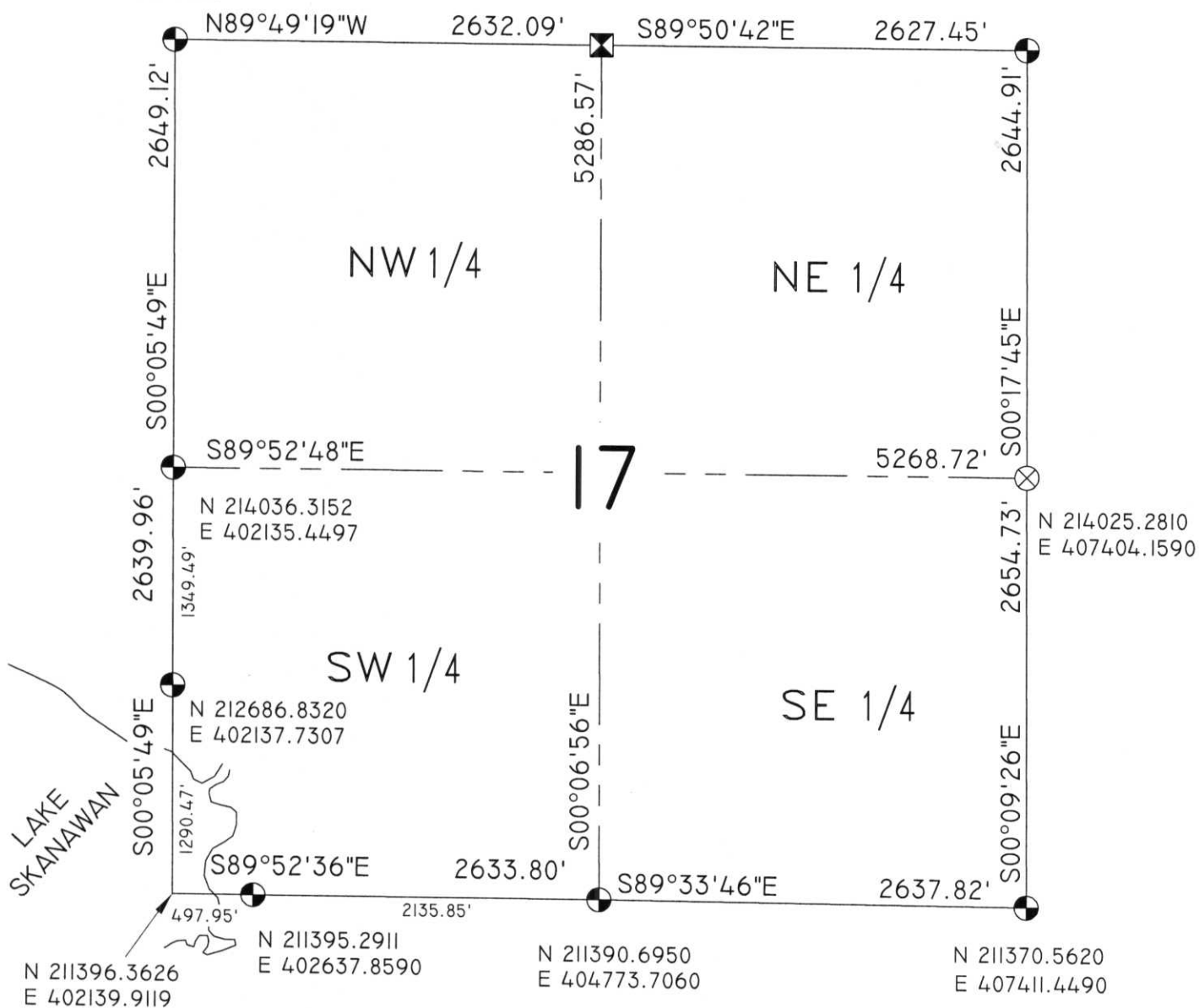


SECTION SUMMARY  $\frac{17}{\text{Section}} - \frac{34}{\text{Township}} - \frac{7}{\text{Range}}$   
**SKANAWAN**  
 Town

N 216685.4350  
E 402130.9720

N 216677.2560  
E 404763.0520

N 216670.1530  
E 407390.4970



COORDINATES ARE REFERENCED TO THE LINCOLN COUNTY COORDINATE SYSTEM AS DEVELOPED BY THE WISCONSIN DEPARTMENT OF TRANSPORTATION AND ARE BASED ON GPS OBSERVATIONS TO CONTROL POINTS AS SUPPLIED BY LINCOLN COUNTY.

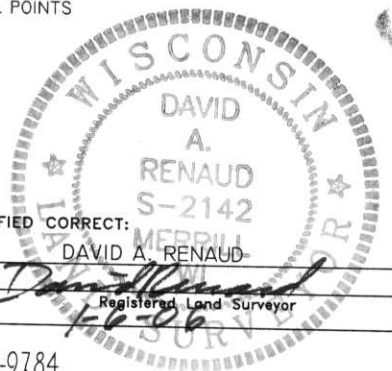
**LEGEND**

- ⊙ - Lincoln County Monument (Berntsen)
- - Stone Monument
- ⊠ - 1-1/2" Capped Iron Pipe
- ▲ - PK Nail
- △ - Mag Nail
- ⊗ - 2" Iron Pipe

RECEIVED BY LINCOLN COUNTY SURVEYOR THIS 6<sup>TH</sup> DAY OF January 20 06  
*Tony Dall*  
 COUNTY SURVEYOR

CERTIFIED CORRECT: *David A. Renaud*  
 DAVID A. RENAUD  
 S-2142  
 Registered Land Surveyor

R.E.I. 4080 N. 20th AVE WAUSAU, WI 54401 (715)675-9784



6-5:W-1