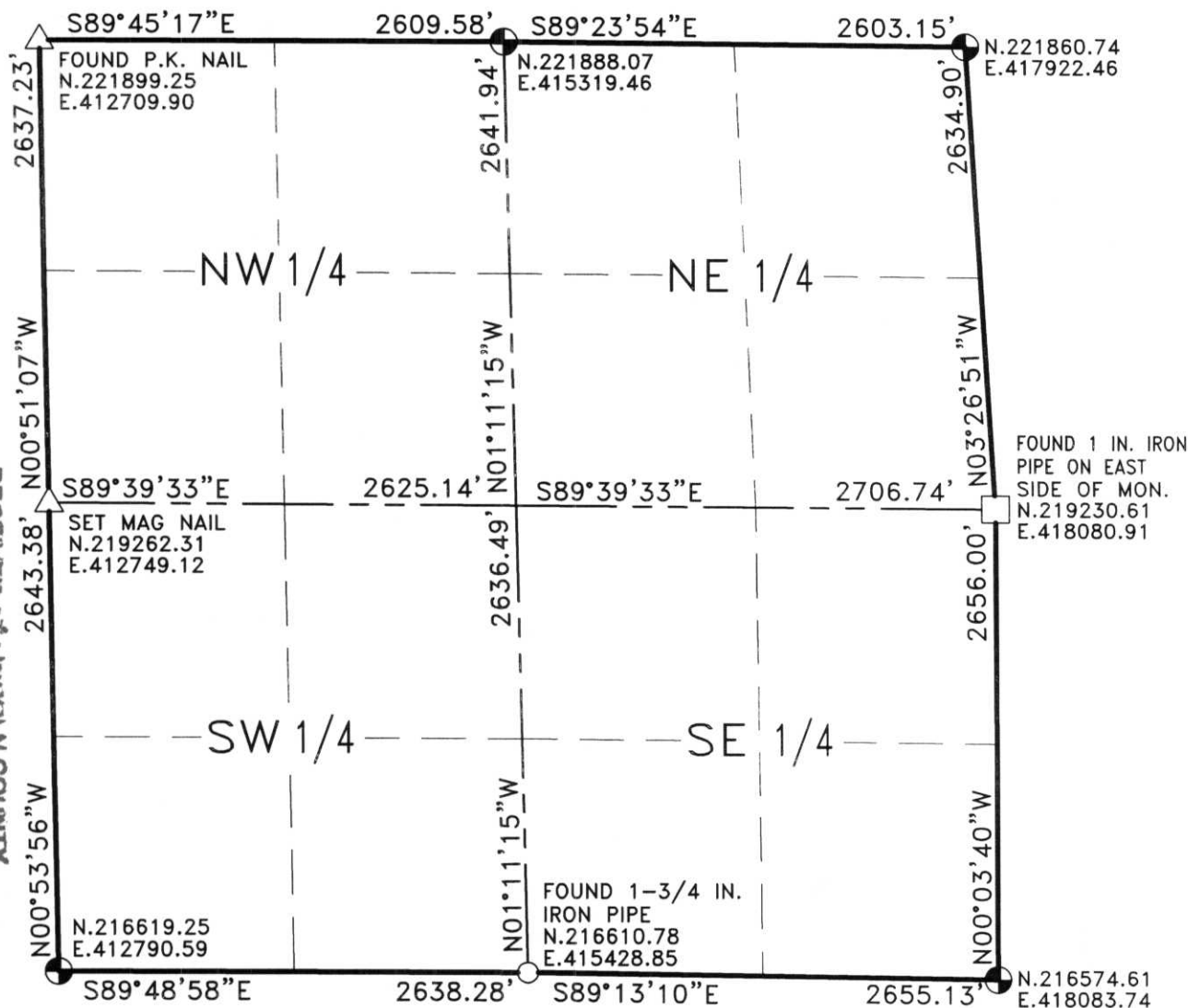


Stock No. 26273

SECTION SUMMARY  
 10 - 34N - 7E  
 Section Township Range  
 SKANAWAN  
 Town



RECEIVED AT LINCOLN COUNTY  
 COURTHOUSE THIS 25<sup>TH</sup> DAY  
 OF September 20 00  
 Tom Dalkow  
 LAND INFORMATION OFFICE

NOTES:  
 1-BEARINGS AND COORDINATES ARE BASED ON THE LINCOLN COUNTY  
 COORDINATE SYSTEM AS MONUMENTED BY LINCOLN COUNTY.

- LEGEND**
- -Bernsten Aluminum Cap Monument
  - -Concrete Monument
  - -1" Iron Pipe
  - -Iron Bar
  - △ -Other



CERTIFIED CORRECT  
 David A. Renaud  
 DAVID A. RENAUD  
 Registered Land Surveyor  
 DATE: SEPT. 6, 2000

R.E.I. 4080 N. 20th AVE WAUSAU, WI 54401 (715)675-9784

E-I: 13-17



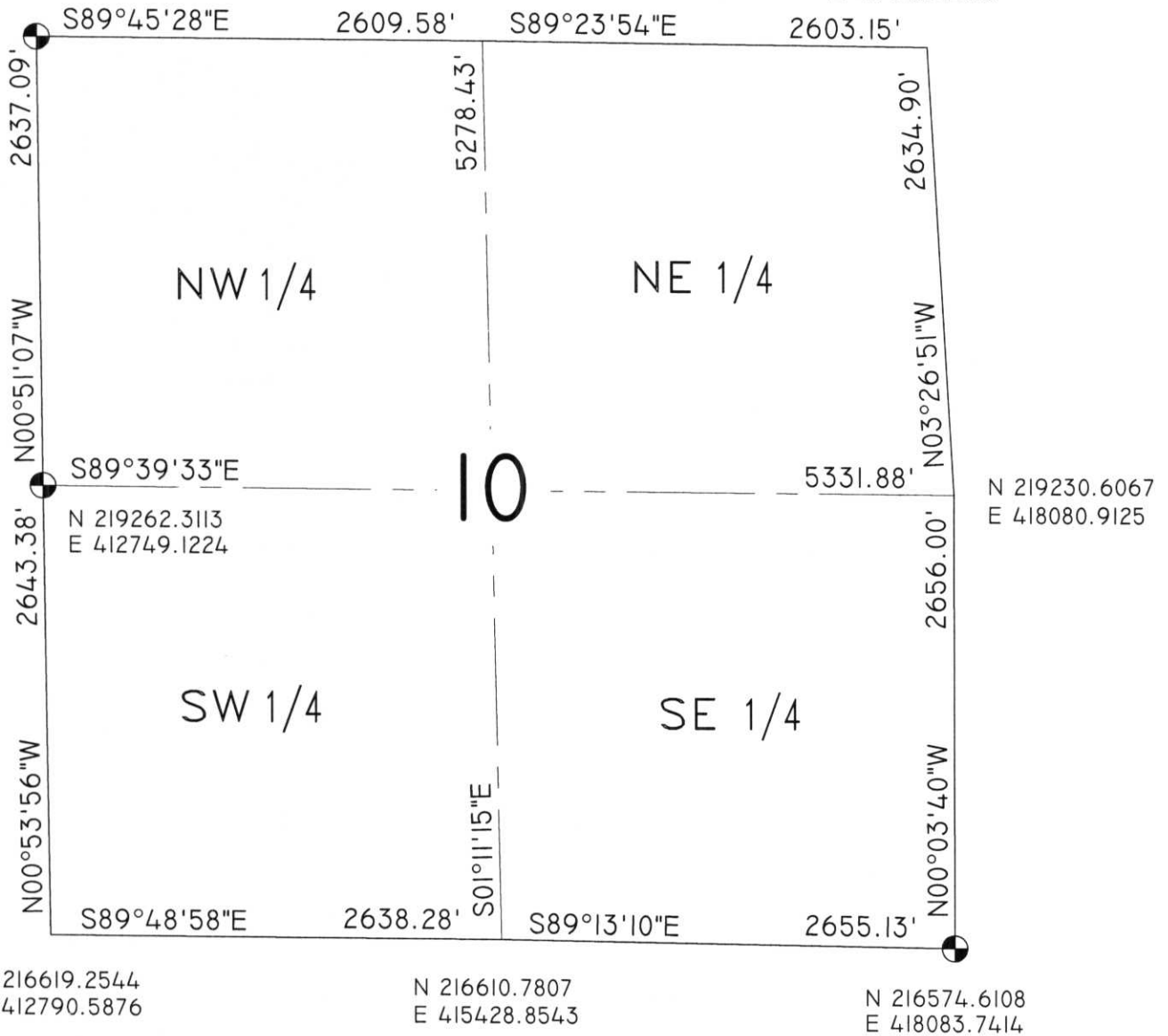
SECTION SUMMARY

10 - 34 - 7  
 Section Township Range  
 SKANAWAN  
 Town

N 221899.1054  
 E 412709.9070

N 221888.0726  
 E 415319.4592

N 221860.7396  
 E 417922.4638



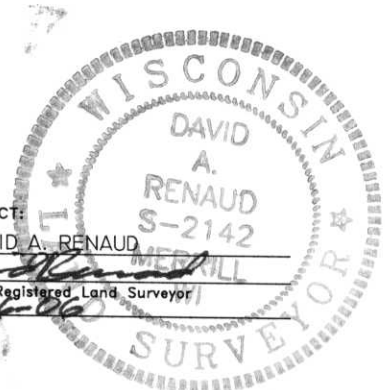
COORDINATES ARE REFERENCED TO THE LINCOLN COUNTY COORDINATE SYSTEM AS DEVELOPED BY THE WISCONSIN DEPARTMENT OF TRANSPORTATION AND ARE BASED ON GPS OBSERVATIONS TO CONTROL POINTS AS SUPPLIED BY LINCOLN COUNTY.

LEGEND

- - Lincoln County Monument (Berntsen)
- - Stone Monument
- - 1" Iron Pipe
- - 1" Iron Bar
- △ - Mag Nail

RECEIVED BY LINCOLN COUNTY SURVEYOR THIS 6<sup>TH</sup> DAY OF January 20 06  
*Tony Diller*  
 COUNTY SURVEYOR  
 R.E.H. 4080 N. 20TH AVE WAUSAU, WI 54401 (715)675-9784

CERTIFIED CORRECT:  
 DAVID A. RENAUD  
*David Renaud*  
 Registered Land Surveyor  
 DATE: 1-6-06



E-I: 13-17