

U.S. PUBLIC LAND SURVEY TRAVERSE RECORD
County Section Control Data

 Preliminary measurements

SECTION: 15

Final measurements

T. 34 N. - R. 6 E.

Civil Township: BRADLEY

Surveyor: EUGENE UTTECH

R.L.S. No. S-1451

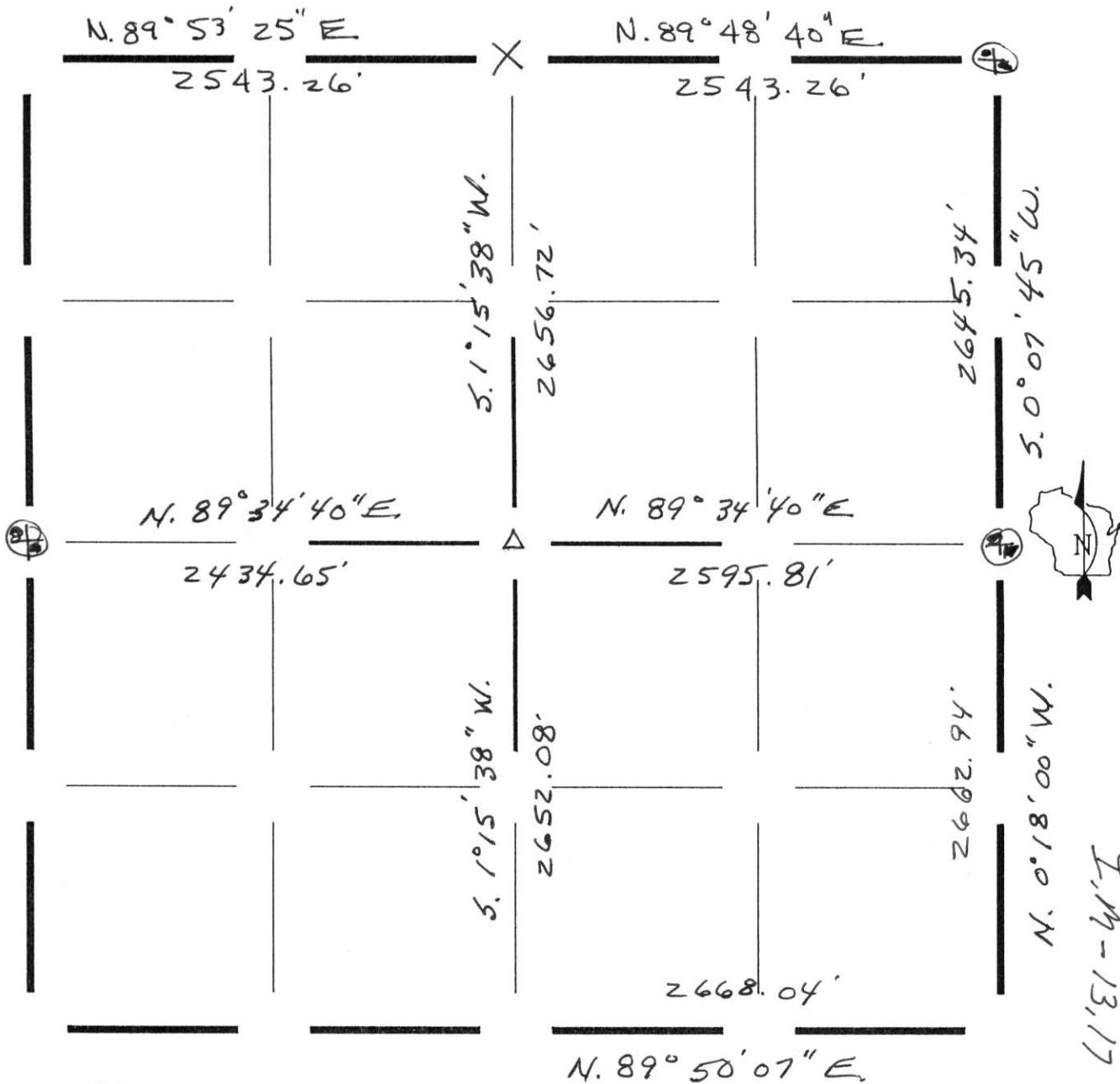
Firm: MSA

Survey No. 1451

Date 4.5.02

Sheet of Sheets

Azimuth or bearing basis



RECEIVED AT LINCOLN COUNTY
COURTHOUSE THIS 5TH DAY
OF April 20 02
Tony Walker
LAND INFORMATION OFFICE

I.M-13,17

⊙ - COUNTY MONUMENT

N. 89° 50' 07" E
(see information on reverse side)



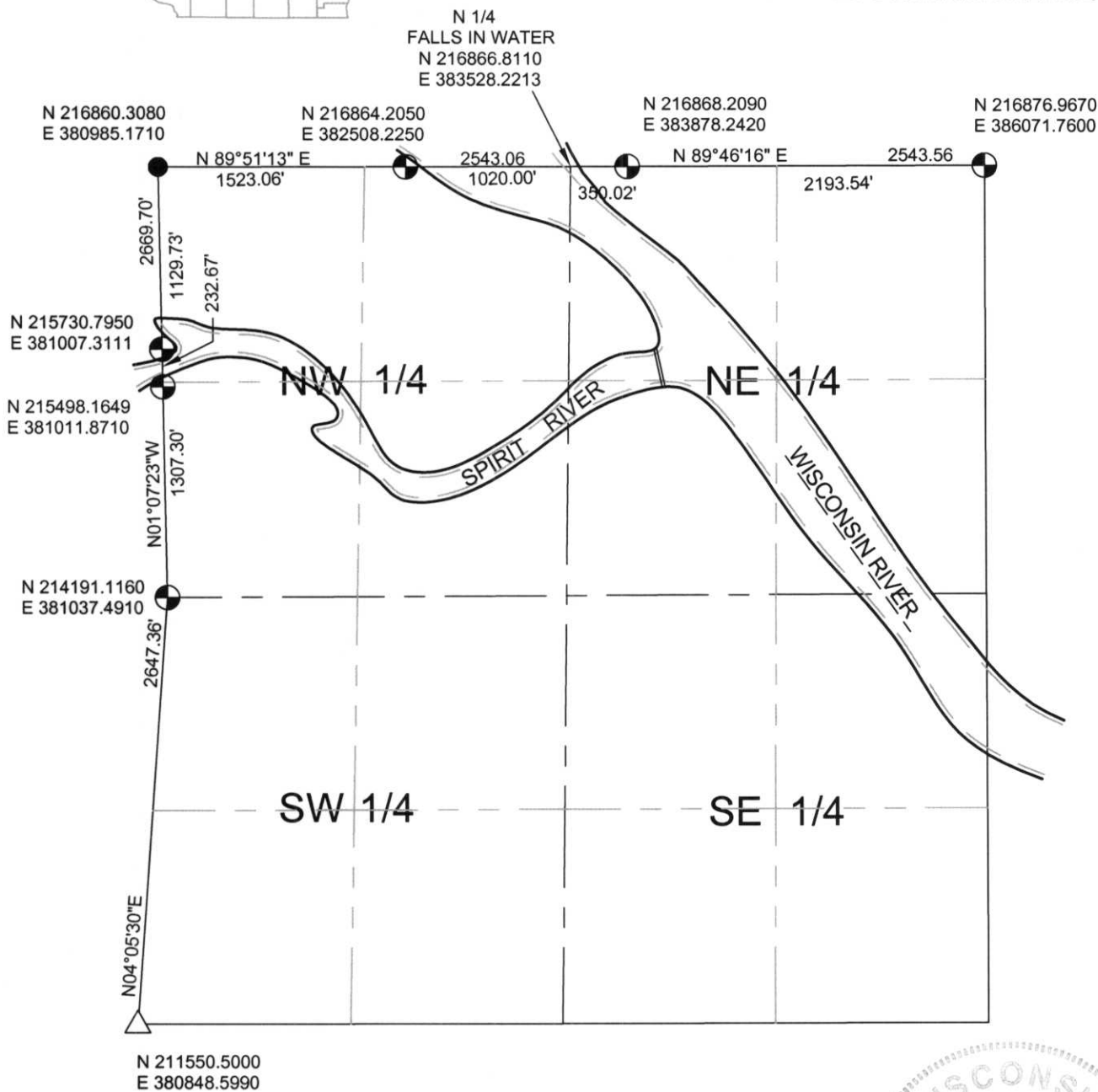
SECTION SUMMARY

15 - 34N - 6E
Section Township Range
BRADLEY
Town

North



RECEIVED AT LINCOLN COUNTY
COURTHOUSE THIS 9TH DAY
OF January 20 02
Tom Dallen
LAND INFORMATION OFFICE



NOTES:
COORDINATES AND BEARINGS ARE REFERENCED TO THE LINCOLN COUNTY COORDINATE SYSTEM AS DEVELOPED BY THE WISCONSIN DEPARTMENT OF TRANSPORTATION AND WERE DETERMINED BY GPS OBSERVATIONS ON CONTROL POINTS AS SUPPLIED BY THE DOT.

LEGEND

- ⊕ - Lincoln County Monument
- - Stone Monument
- - 1-1/2" Iron Pipe
- - 2" Iron Pipe
- △ - PK. Nail To Be Tied Out By County Surveyor



CERTIFIED CORRECT:

Thomas A. Radenz
Registered Land Surveyor

DATE: 1/8/02

IM: 13.17