

Lincoln County Section Summary

Section 35, T 34 N, R 5 E

Tomahawk Township

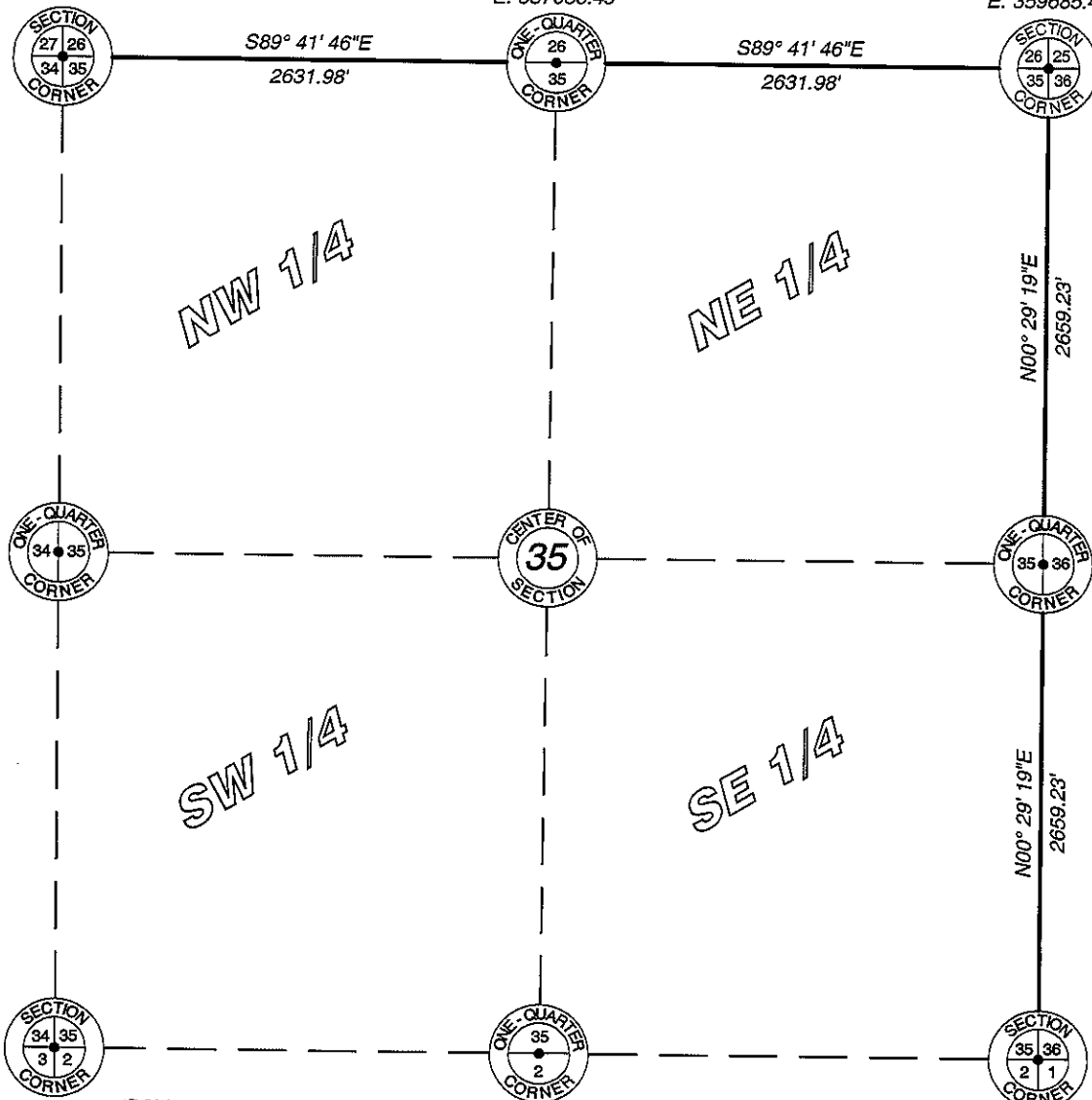
Lincoln County, Wisconsin

Coordinate
provided by Lincoln
County Surveyor

N: 201063.15'
E: 354421.55'

Lincoln County
Berntsen
Monument Set
N: 201049.19'
E: 357053.49'

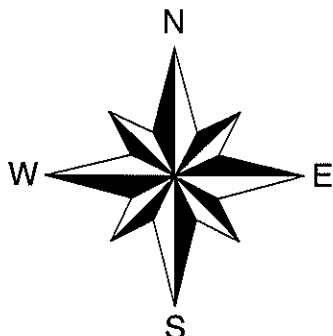
Lincoln County
Berntsen
Monument Set
N: 201035.24'
E: 359685.43'



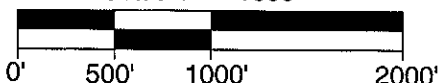
Lincoln County
Berntsen
Monument Set
N: 198376.11'
E: 359662.76'

N: 195716.98'
E: 359640.08'
6" Square Granite
Monument Found

RECEIVED BY LINCOLN COUNTY
SURVEYOR THIS 21ST DAY
OF December 20, 12
Tony Dahl
COUNTY SURVEYOR
Lincoln County Grid



Scale 1" = 1000'



I hereby certify that the information shown hereon is true
and correct to the best of my knowledge and belief.



5230 Highway 70 West
Eagle River, WI 54521

Phone 715.479.2570
Fax 715.479.7274

mainesandassociates.com

Sec 35