

Lincoln County Section Summary

Section 31, T 34 N, R 5 E

Tomahawk Township

Lincoln County, Wisconsin

Lincoln County
Berntsen
Monument Set
N: 201172.81'
E: 333346.87'

Computed
position
N: 201188.99'
E: 335970.49'

Lincoln County
Berntsen
Monument Set
N: 201205.25'
E: 338607.30'



N89° 38' 48"E
2623.67'

N89° 38' 48"E
2636.86'

N00° 36' 59"E
2646.72'

NW 1/4

NE 1/4

N00° 13' 22"E
2677.09'

Lincoln County
Berntsen
Monument Set
N: 198526.24'
E: 333318.40'



Computed
position
N: 198528.18'
E: 338596.89'

N00° 36' 59"E
2646.72'

SW 1/4

SE 1/4

N00° 13' 22"E
2677.09'

N: 195879.68'
E: 333289.92'

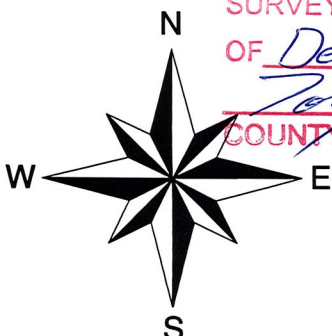


N: 195851.11'
E: 338586.47'

6" Square Granite
Monument Found

Coordinate
provided by Lincoln
County Surveyor

Lincoln County Grid



Scale 1" = 1000'



RECEIVED BY LINCOLN COUNTY
SURVEYOR THIS 21ST DAY
OF December 20 12
Tony D...
COUNTY SURVEYOR



I hereby certify that the information shown hereon is true
and correct to the best of my knowledge and belief.



5230 Highway 70 West
Eagle River, WI 54521

Phone 715.479.2570
Fax 715.479.7274

mainesandassociates.com

Sec 31