

# Lincoln County Section Summary

## Section 28, T 34 N, R 5 E

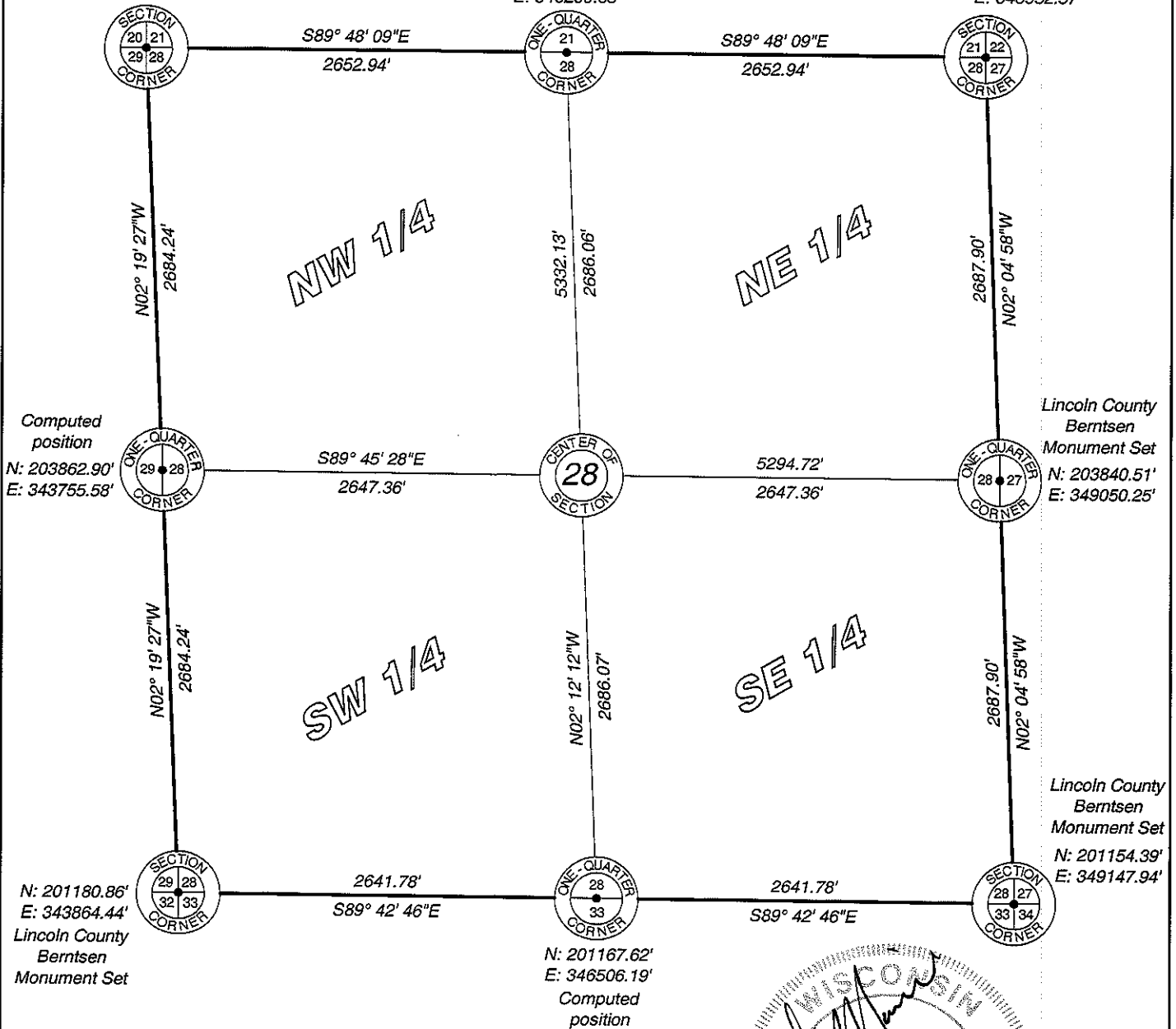
### Tomahawk Township

### Lincoln County, Wisconsin

Lincoln County  
Berntsen  
Monument Set  
N: 206544.93'  
E: 343646.73'

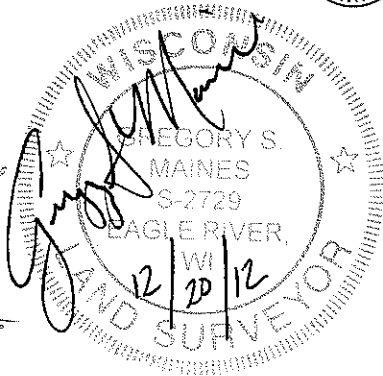
Computed  
position  
N: 206535.78'  
E: 346299.65'

Lincoln County  
Berntsen  
Monument Set  
N: 206526.64'  
E: 348952.57'

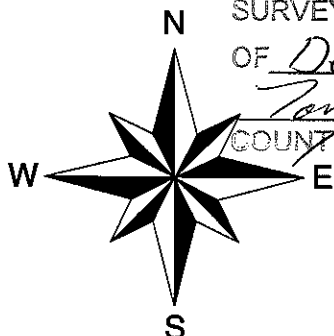


Lincoln County Grid

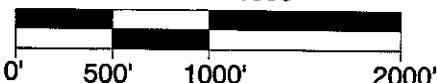
RECEIVED BY LINCOLN COUNTY  
SURVEYOR THIS 21<sup>ST</sup> DAY  
OF December 20 12  
Tony Dallen  
COUNTY SURVEYOR



I hereby certify that the information shown hereon is true and correct to the best of my knowledge and belief.



Scale 1" = 1000'



5230 Highway 70 West  
Eagle River, WI 54521

Phone 715.479.2570  
Fax 715.479.7274

mainesandassociates.com

Sec 28