

Lincoln County Section Summary

Section 26, T 34 N, R 5 E

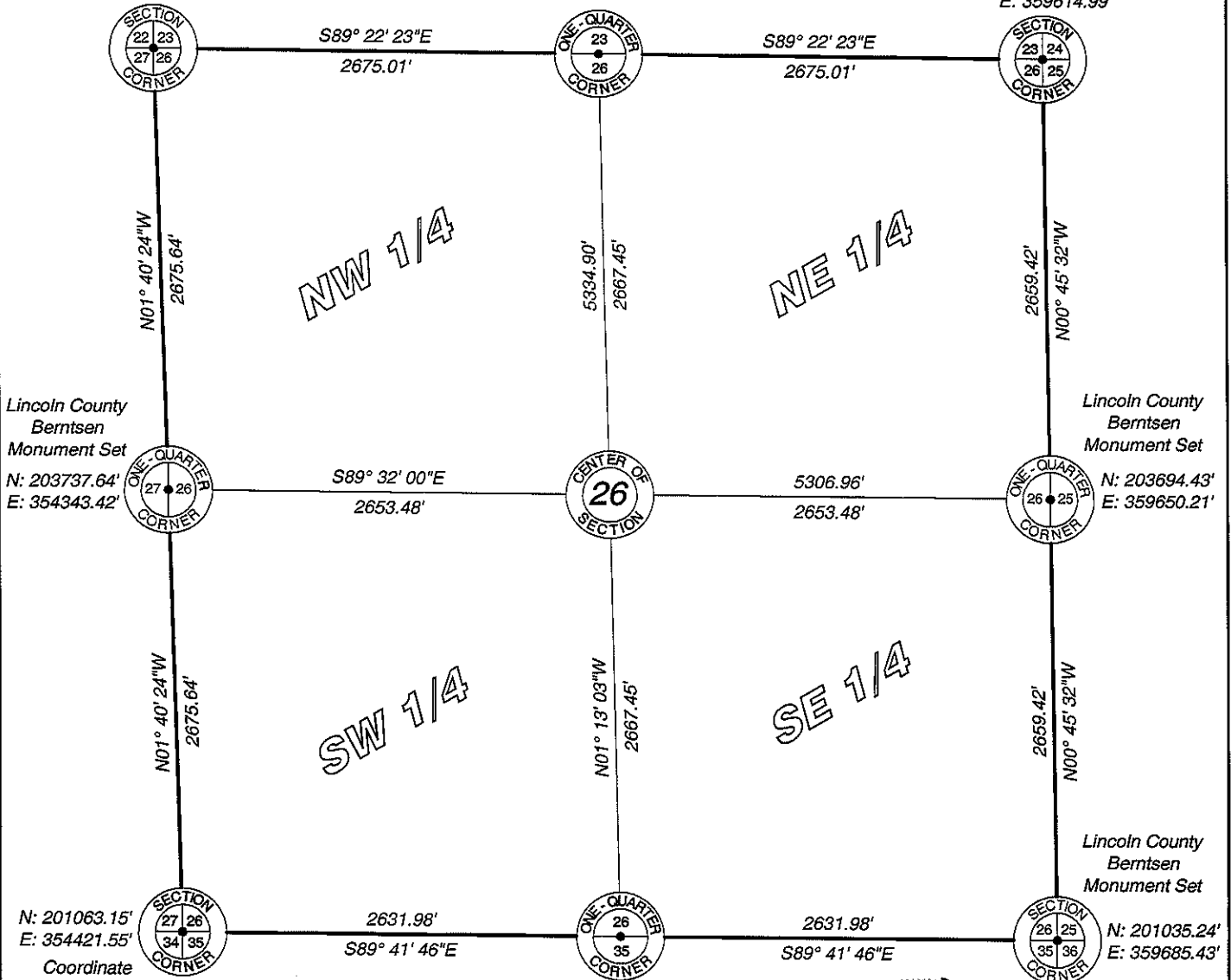
Tomahawk Township

Lincoln County, Wisconsin

Coordinate provided by Lincoln County Surveyor
 N: 206412.14'
 E: 354265.30'

Coordinate provided by Lincoln County Surveyor
 N: 206382.88'
 E: 356940.15'

Coordinate provided by Lincoln County Surveyor
 N: 206353.61'
 E: 359614.99'



Lincoln County Berntsen Monument Set
 N: 203737.64'
 E: 354343.42'

Lincoln County Berntsen Monument Set
 N: 203694.43'
 E: 359650.21'

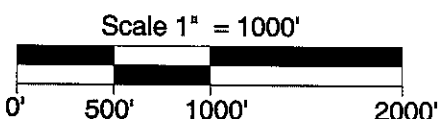
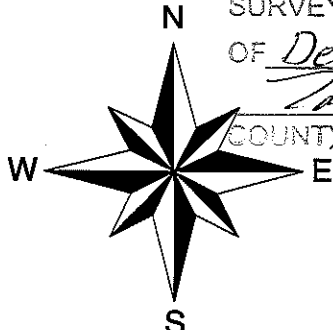
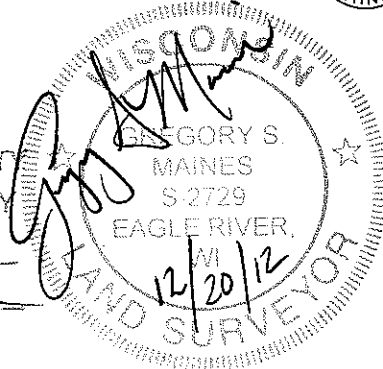
Lincoln County Berntsen Monument Set

N: 201063.15'
 E: 354421.55'
 Coordinate provided by Lincoln County Surveyor

N: 201049.19'
 E: 357053.49'
 Lincoln County Berntsen Monument Set

N: 201035.24'
 E: 359685.43'

RECEIVED BY LINCOLN COUNTY SURVEYOR THIS 21ST DAY OF December 2012
Tom Dahl
 COUNTY SURVEYOR



I hereby certify that the information shown hereon is true and correct to the best of my knowledge and belief.



MAINES & ASSOCIATES
 Land Surveyors

5230 Highway 70 West
 Eagle River, WI 54521
 Phone 715.479.2570
 Fax 715.479.7274

mainesandassociates.com

Sec 26