





# LINCOLN COUNTY SECTION SUMMARY

## Legend

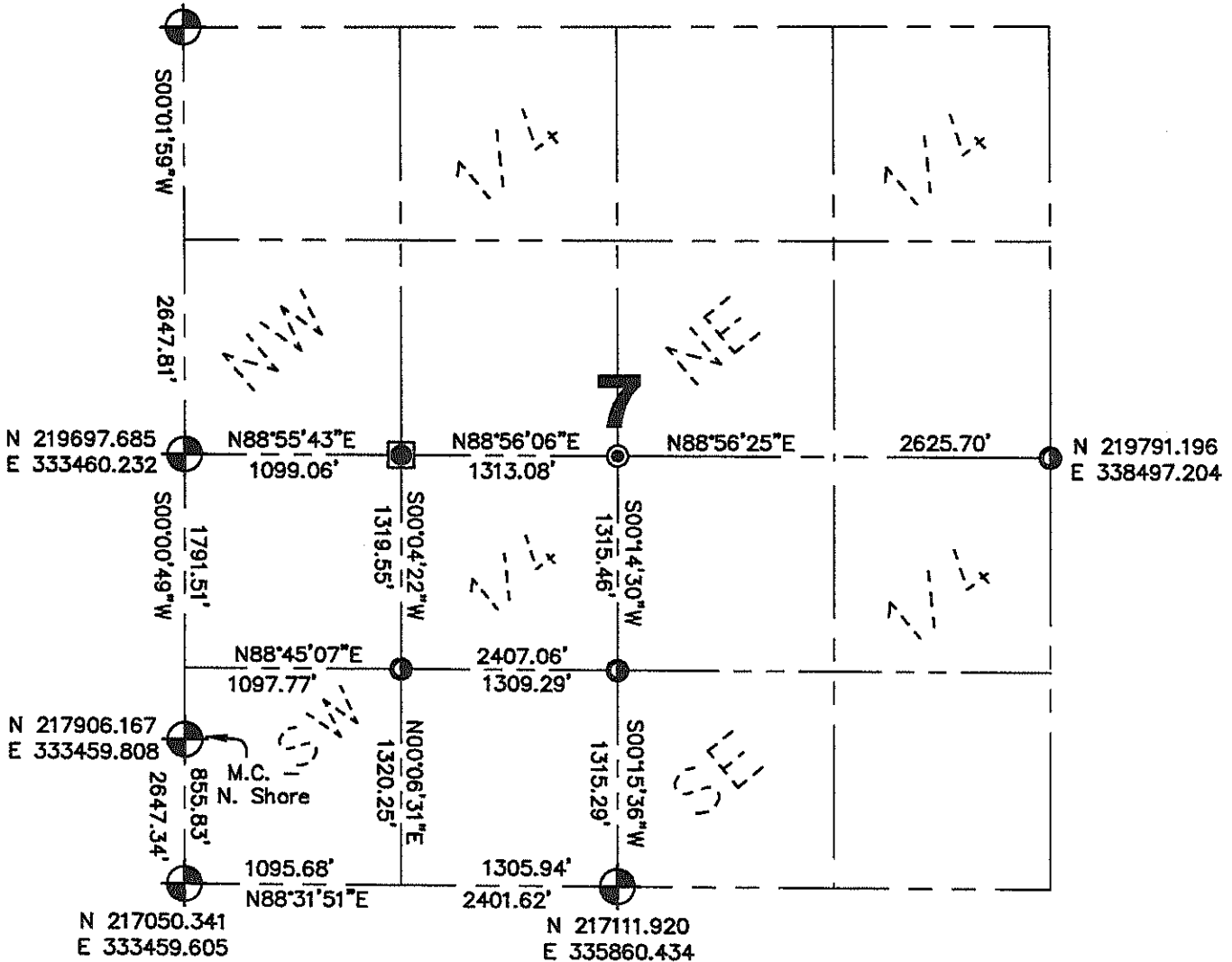
-  Set Lincoln County Berntsen Aluminum Monument
-  Found 1-1/2" Iron Pipe
-  Found 1" Iron Pipe
-  Found 1-1/4" Iron Pipe

**7** — **34N** — **5E**  
 Section Township Range  
**Tomahawk**  
 Town



Proj. 593

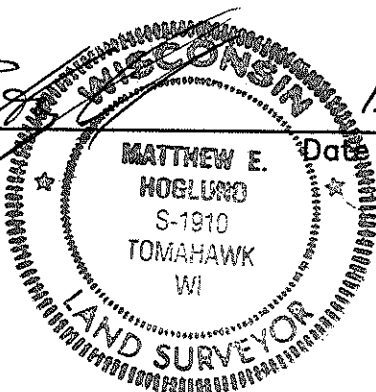
N 222345.493  
 E 333461.763



Coordinates and bearings are referenced to the Lincoln County Coordinate System as developed by the Wisconsin Department of Transportation and were determined by GPS observations on control points as supplied by Lincoln County Land Information Office or by manual survey methods, to the best of my knowledge and belief.

Certified Correct:

*Matthew E. Hoglund*  
 Matthew E. Hoglund Date 11/3/2008



RECEIVED BY LINCOLN COUNTY SURVEYOR THIS 4TH DAY OF November 20 08  
*Randy Dull*  
 COUNTY SURVEYOR

Sec. 7