

# Lincoln County Section Summary

## Section 1, T 34 N, R 5 E

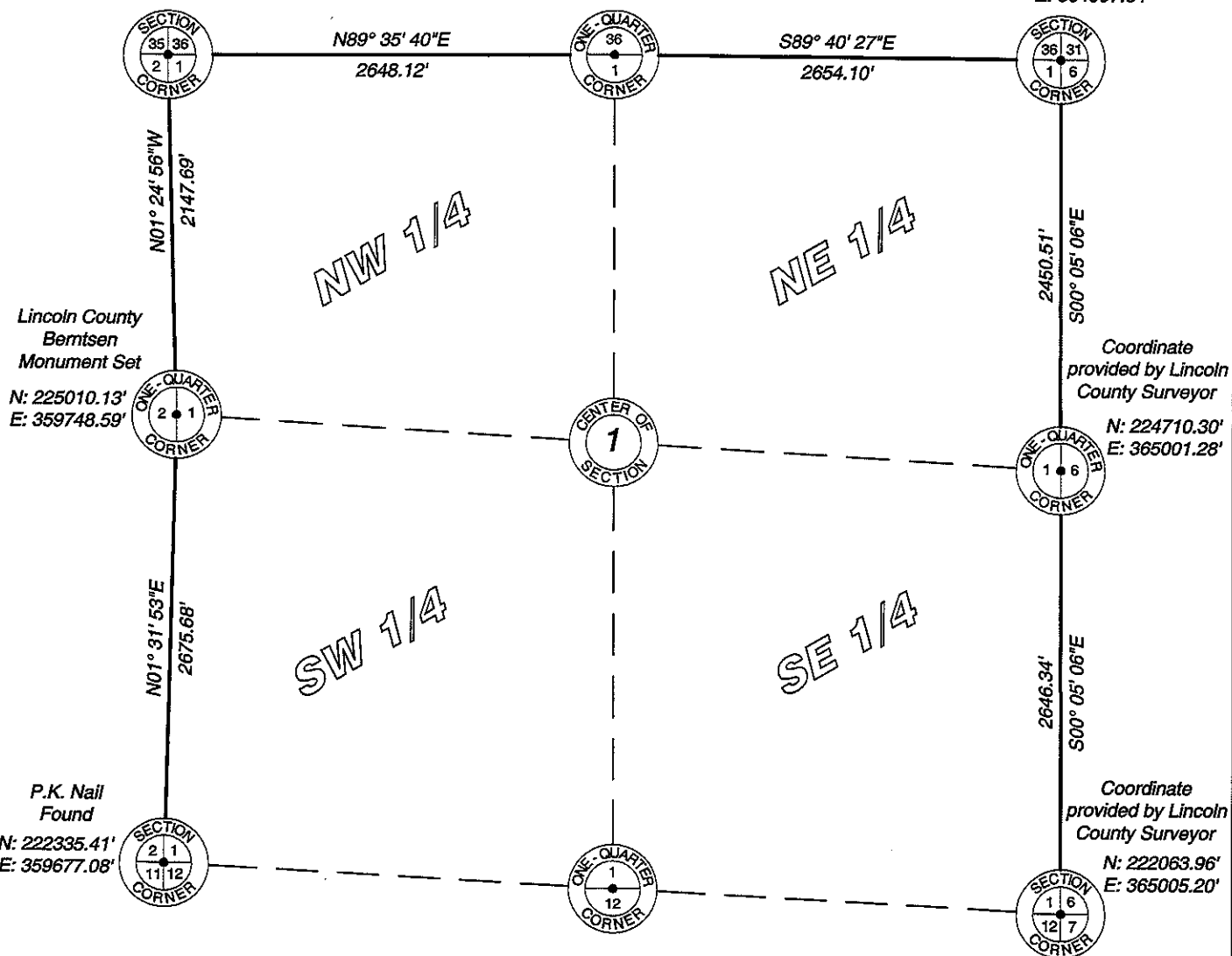
### Tomahawk Township

### Lincoln County, Wisconsin

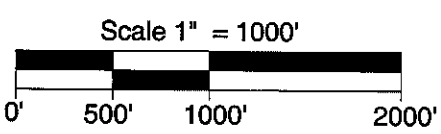
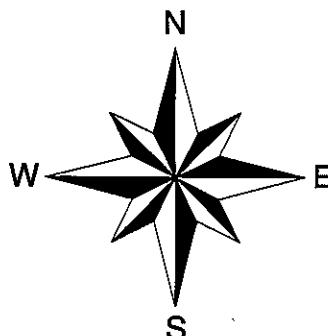
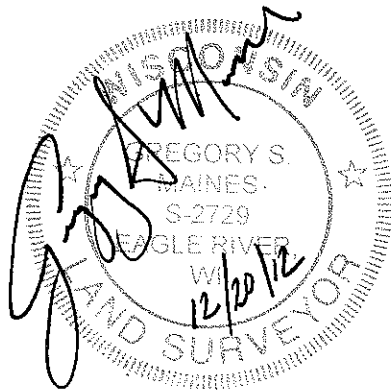
Lincoln County  
Bemtsen  
Monument Set  
N: 227157.17'  
E: 359695.53'

Railroad Spike  
Found  
N: 227175.91'  
E: 362343.59'

Coordinate  
provided by Lincoln  
County Surveyor  
N: 227160.81'  
E: 364997.64'



RECEIVED BY LINCOLN COUNTY  
SURVEYOR THIS 21<sup>ST</sup> DAY  
OF December 20 12  
*Gregory S. Maines*  
COUNTY SURVEYOR  
Lincoln County Grid



I hereby certify that the information shown hereon is true and correct to the best of my knowledge and belief.

5230 Highway 70 West  
Eagle River, WI 54521  
Phone 715.479.2570  
Fax 715.479.7274  
mainesandassociates.com

Sec 1

# Lincoln County Section Summary

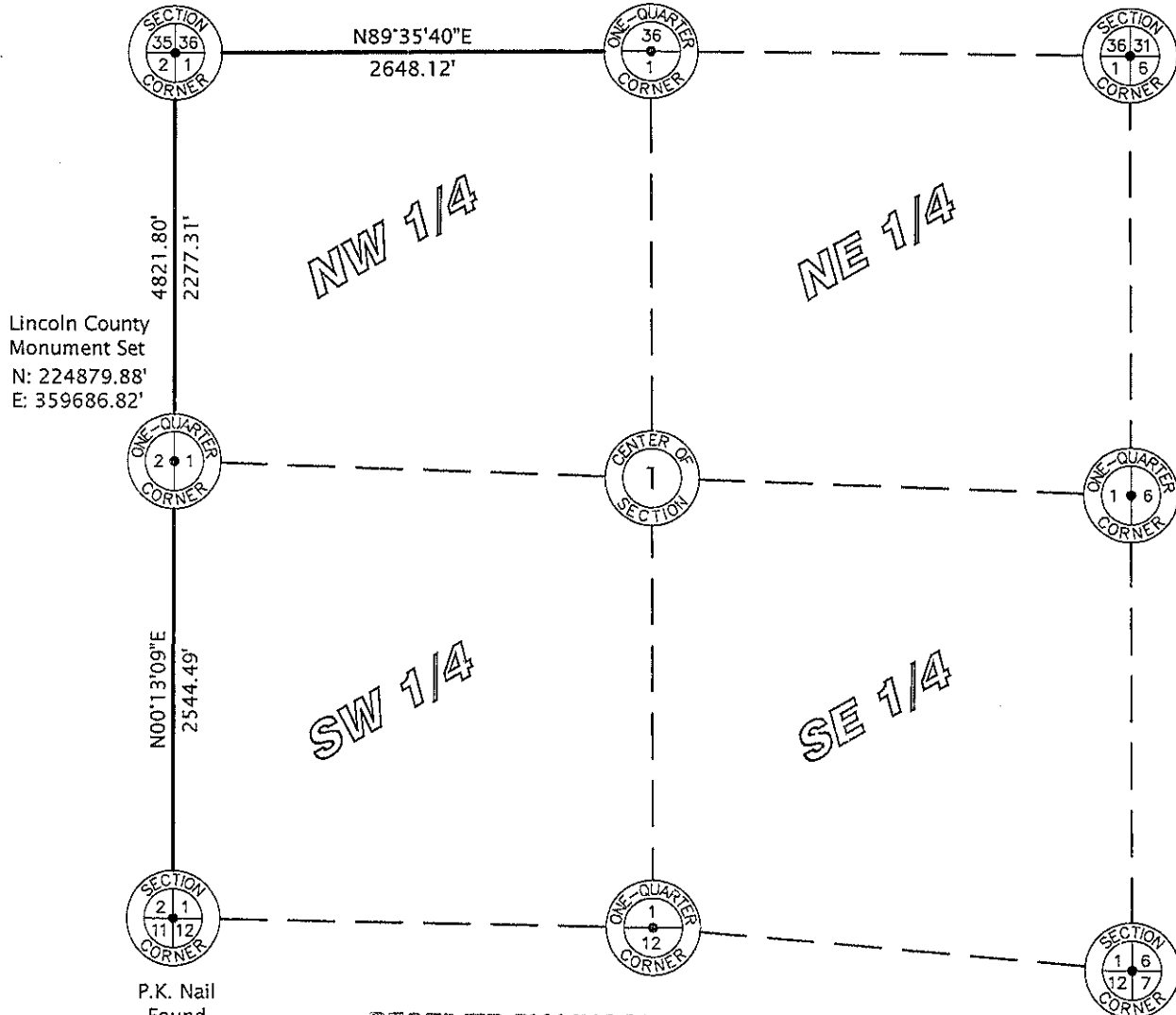
## Section 1, T 34 N, R 5 E

### Tomahawk Township

### Lincoln County, Wisconsin

Lincoln County  
Monument Set  
N: 227157.17'  
E: 359695.53'

Railroad Spike  
Found  
N: 227175.91'  
E: 362343.59'

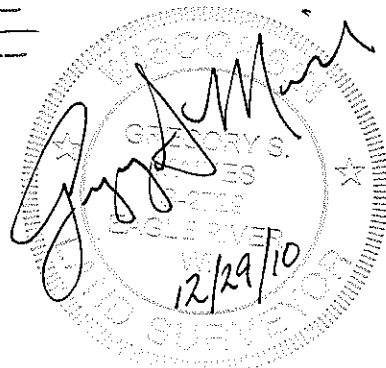
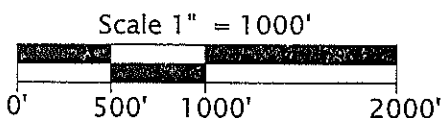
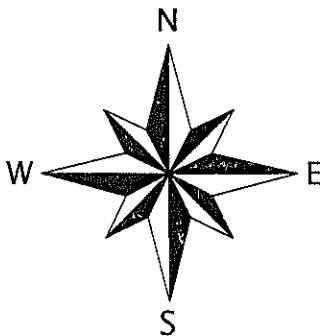


Lincoln County  
Monument Set  
N: 224879.88'  
E: 359686.82'

P.K. Nail  
Found  
N: 222335.41'  
E: 359677.08'

RECEIVED BY LINCOLN COUNTY  
SURVEYOR THIS 30<sup>TH</sup> DAY  
OF December 20 10  
*Tom Durr*  
COUNTY SURVEYOR

Lincoln County Grid



I hereby certify that the information shown hereon is true and correct to the best of my knowledge and belief.



**Favorite, Anderson & Maines  
Surveying, S.C.**

5230 HWY 70 WEST - EAGLE RIVER, WI 54521  
PHONE: (715) 479-2570 - FAX: (715) 479-7274

Sec. 1