

Lincoln County Section Summary

Section 35, T 34 N, R 4 E

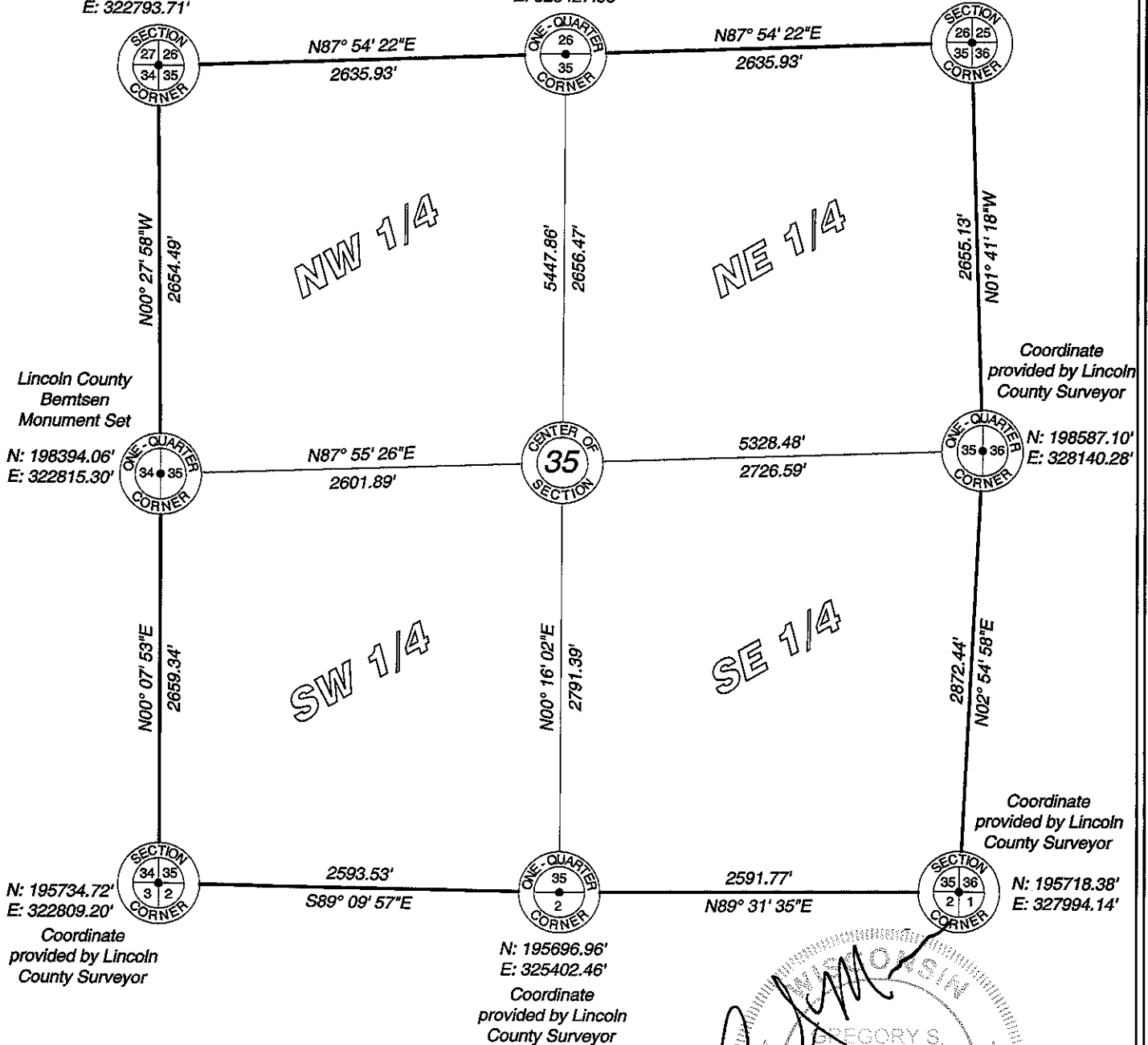
Tomahawk Township

Lincoln County, Wisconsin

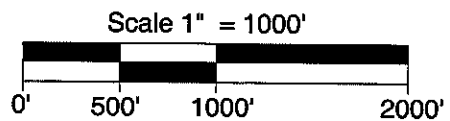
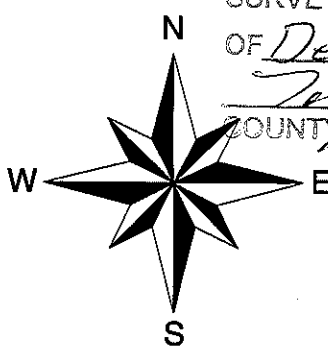
6" Square Granite
Monument Found
N: 201048.45'
E: 322793.71'

Computed Position
N: 201144.76'
E: 325427.88'

Lincoln County
Berntsen
Monument Set
N: 201241.07'
E: 328062.05'



RECEIVED BY LINCOLN COUNTY
SURVEYOR THIS 21ST DAY
OF December 20, 12
Gregory S. Maines
COUNTY SURVEYOR



I hereby certify that the information shown hereon is true and correct to the best of my knowledge and belief.

2530 Highway 70 West
Eagle River, WI 54521
Phone 715.479.2570
Fax 715.479.7274
mainesandassociates.com

Sec 35