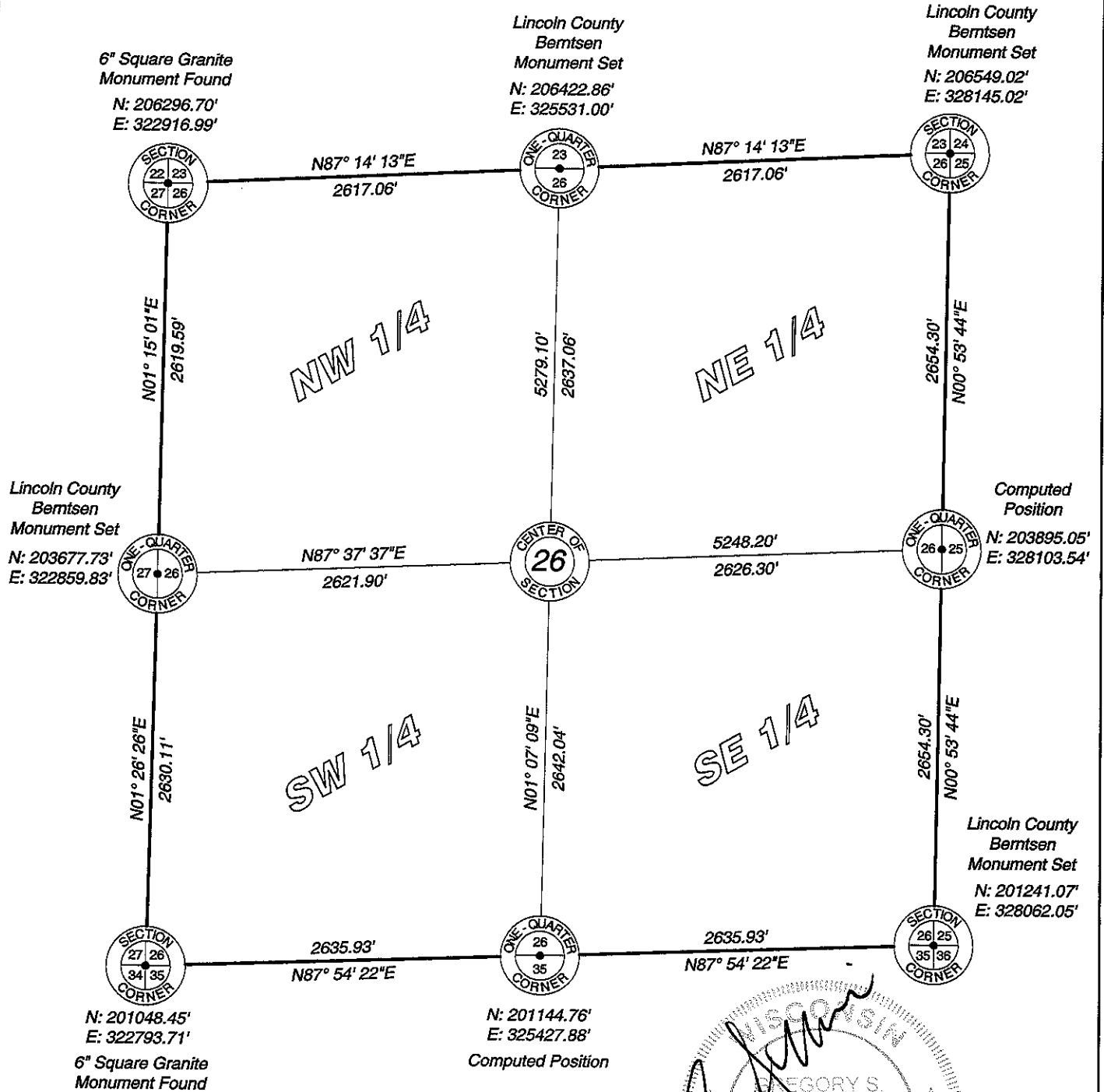


# Lincoln County Section Summary

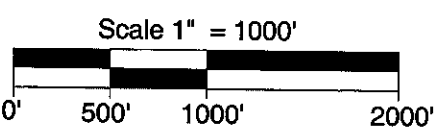
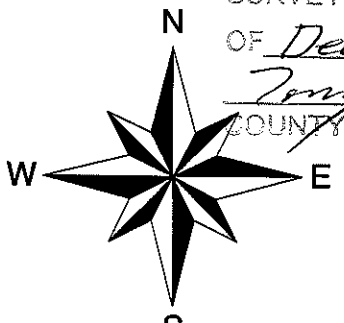
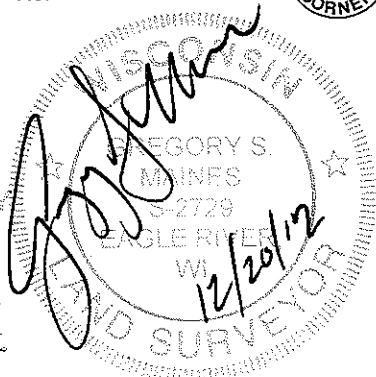
## Section 26, T 34 N, R 4 E

### Tomahawk Township

### Lincoln County, Wisconsin



RECEIVED BY LINCOLN COUNTY SURVEYOR THIS 21<sup>ST</sup> DAY OF December 20 12  
*Tommy Dahn*  
 COUNTY SURVEYOR



I hereby certify that the information shown hereon is true and correct to the best of my knowledge and belief.

**MAINES & ASSOCIATES**  
Land Surveyors

5230 Highway 70 West  
Eagle River, WI 54521

Phone 715.479.2570  
Fax 715.479.7274

mainesandassociates.com

Sec 26