

Lincoln County Section Summary

Section 25, T 34 N, R 4 E

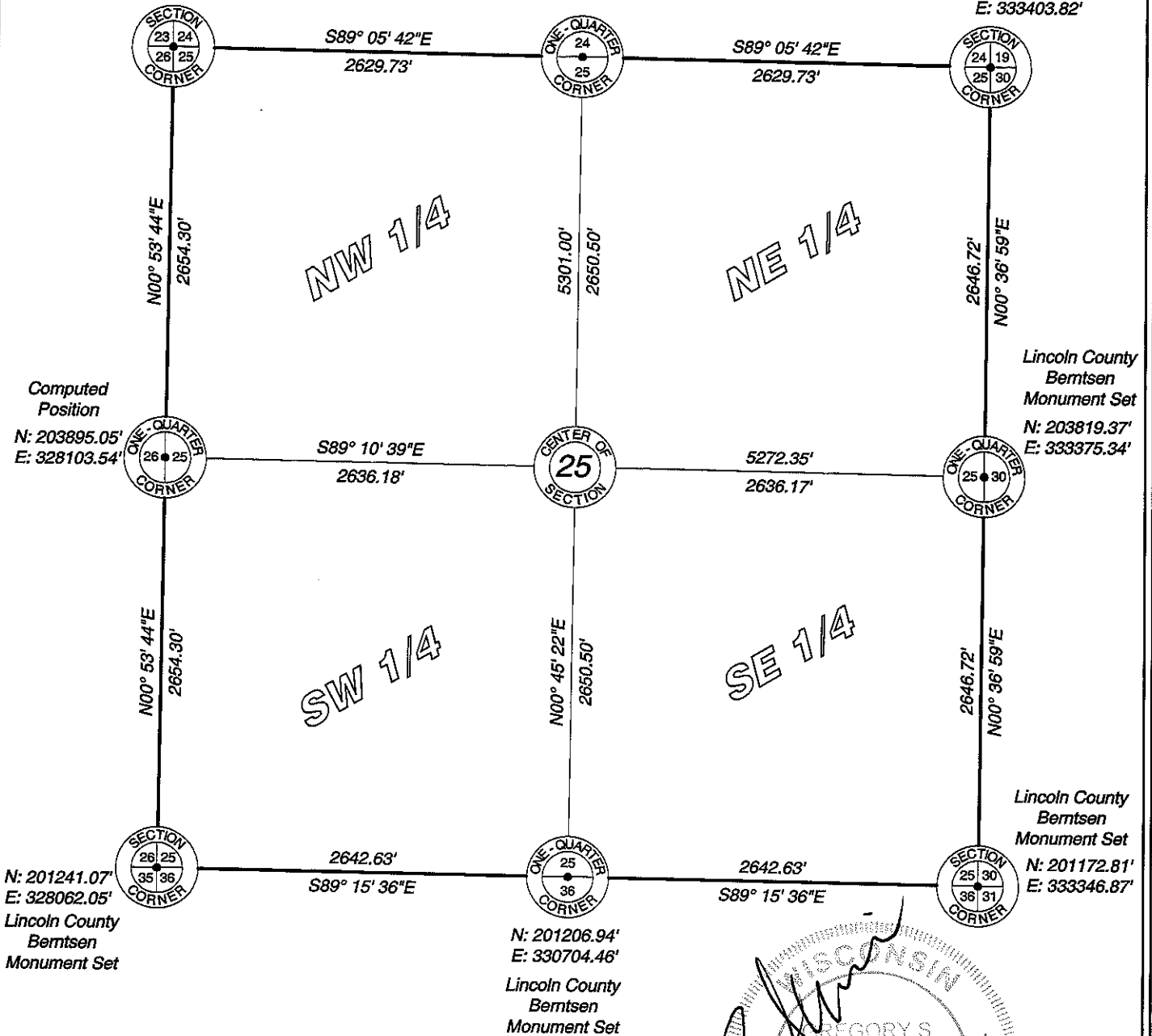
Tomahawk Township

Lincoln County, Wisconsin

Lincoln County
Bermsen
Monument Set
N: 206549.02'
E: 328145.02'

Computed Position
N: 206507.48'
E: 330774.42'

Lincoln County
Bermsen
Monument Set
N: 206465.94'
E: 333403.82'



Computed Position
N: 203895.05'
E: 328103.54'

Lincoln County
Bermsen
Monument Set
N: 203819.37'
E: 333375.34'

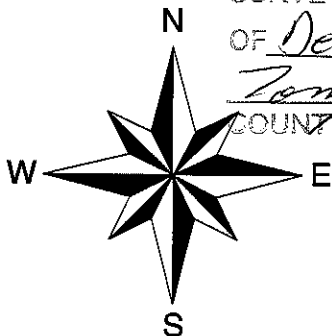
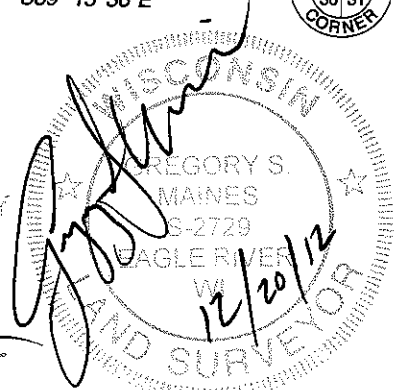
N: 201241.07'
E: 328062.05'
Lincoln County
Bermsen
Monument Set

N: 201206.94'
E: 330704.46'
Lincoln County
Bermsen
Monument Set

Lincoln County
Bermsen
Monument Set
N: 201172.81'
E: 333346.87'

Lincoln County Grid

RECEIVED BY LINCOLN COUNTY
SURVEYOR THIS 21ST DAY
OF December 20 12
Tom Dalko
COUNTY SURVEYOR



Scale 1" = 1000'



I hereby certify that the information shown hereon is true and correct to the best of my knowledge and belief.



5230 Highway 70 West
Eagle River, WI 54521

Phone 715.479.2570
Fax 715.479.7274

mainesandassociates.com

Sec 25