

# Lincoln County Section Summary

## Section 22, T 34 N, R 4 E

### Tomahawk Township

### Lincoln County, Wisconsin

Coordinate  
provided by Lincoln  
County Surveyor  
N: 211578.26'  
E: 322987.27'

Lincoln County  
Bermsen  
Monument Found  
N: 211325.85'  
E: 317694.49'

6" Square Granite  
Monument Found  
N: 211452.50'  
E: 320341.57'



N87° 15' 39"E  
2650.11'

N87° 16' 43"E  
2648.69'

N00° 36' 53"W  
2610.63'

NW 1/4

5161.27'  
2624.92'

NE 1/4

2641.43'  
N00° 44' 17"E

Lincoln County  
Bermsen  
Monument Set  
N: 208715.37'  
E: 317722.49'



N87° 34' 24"E  
2679.60'



5235.44'  
2555.84'



Lincoln County  
Bermsen  
Monument Set  
N: 208937.04'  
E: 322953.24'

N01° 54' 13"W  
2611.92'

SW 1/4

N01° 16' 08"W  
2596.95'

SE 1/4

2640.59'  
N00° 47' 12"E

N: 206104.89'  
E: 317809.26'



2653.26'  
N85° 56' 43"E



2461.11'  
N89° 54' 07"E



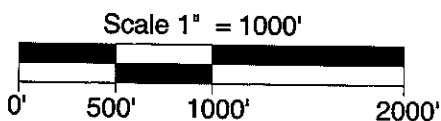
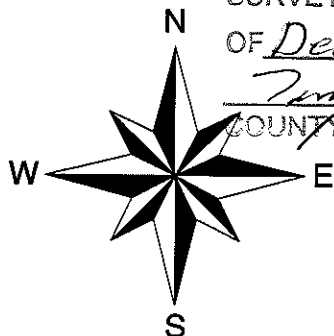
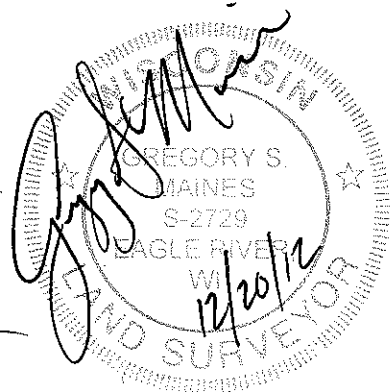
6" Square Granite  
Monument Found

N: 206296.70'  
E: 322916.99'

N: 206292.49'  
E: 320455.88'

Lincoln County  
Bermsen  
Monument Set

RECEIVED BY LINCOLN COUNTY  
Lincoln County Grid  
SURVEYOR THIS 21<sup>ST</sup> DAY  
OF December 20 12  
*Tom Oaker*  
COUNTY SURVEYOR



I hereby certify that the information shown hereon is true  
and correct to the best of my knowledge and belief.



5230 Highway 70 West  
Eagle River, WI 54521

Phone 715.479.2570  
Fax 715.479.7274

**MAINES & ASSOCIATES**  
Land Surveyors

mainesandassociates.com

Sec 22