

Lincoln County Section Summary

Section 15, T 34 N, R 4 E

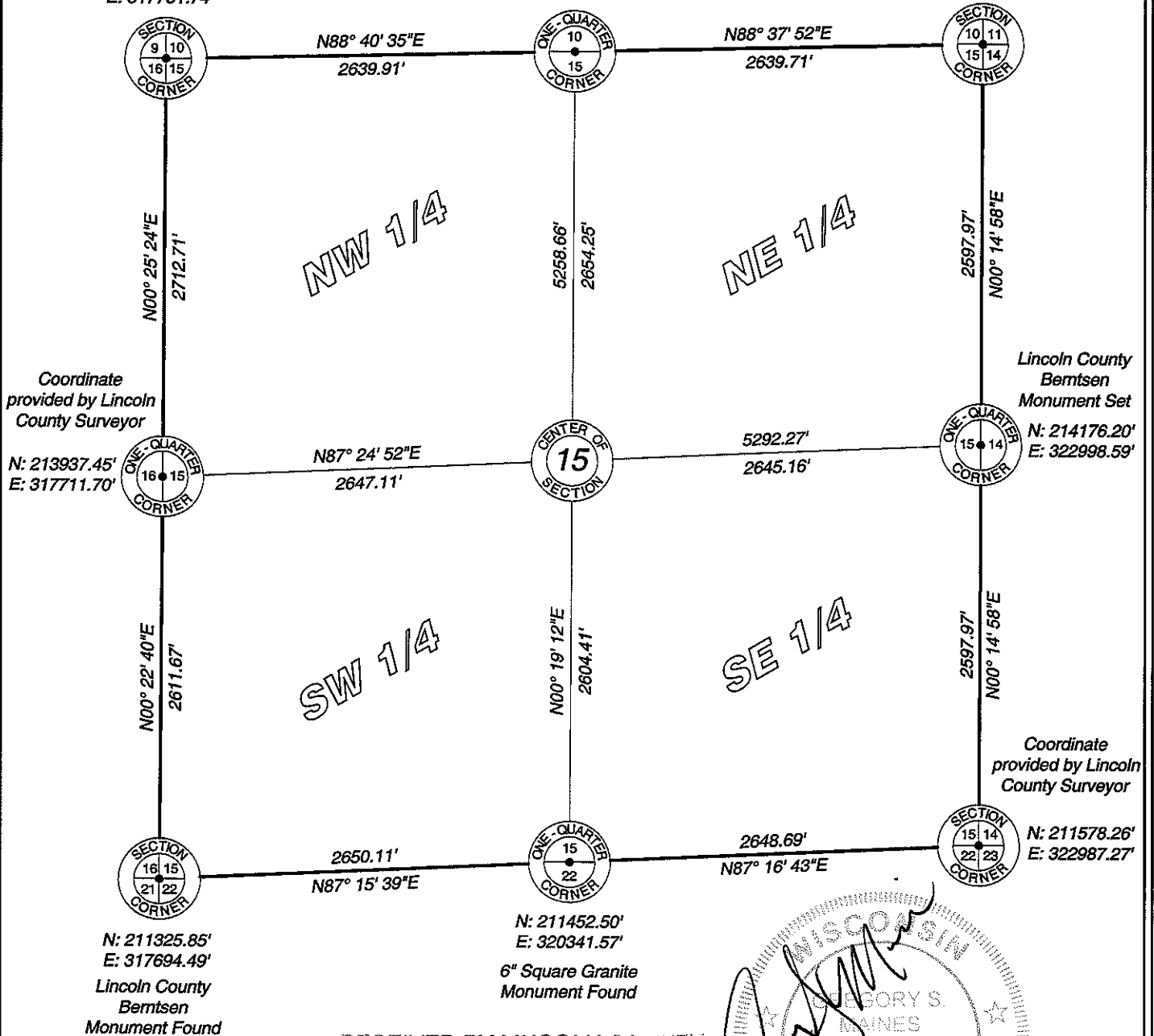
Tomahawk Township

Lincoln County, Wisconsin

6" Square Granite Monument Found
 N: 216650.09'
 E: 317731.74'

2" Iron Pipe With Iron Cap
 N: 216711.08'
 E: 320370.95'

Lincoln County Bemtsen Monument Set
 N: 216774.14'
 E: 323009.90'



Coordinate provided by Lincoln County Surveyor

Lincoln County Bemtsen Monument Set

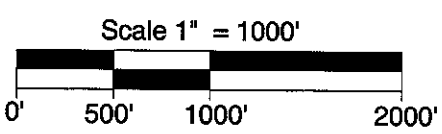
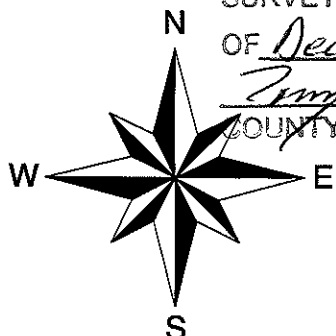
Coordinate provided by Lincoln County Surveyor

N: 211325.85'
 E: 317694.49'
 Lincoln County Bemtsen Monument Found

N: 211452.50'
 E: 320341.57'
 6" Square Granite Monument Found

N: 211578.26'
 E: 322987.27'

RECEIVED BY LINCOLN COUNTY SURVEYOR THIS 21ST DAY OF December, 20 12
Tom Palmer
 COUNTY SURVEYOR



I hereby certify that the information shown hereon is true and correct to the best of my knowledge and belief.

5230 Highway 70 West
 Eagle River, WI 54521
 Phone 715.479.2570
 Fax 715.479.7274
 mainesandassociates.com

Sec 15