

# Lincoln County Section Summary

## Section 14, T 34 N, R 4 E

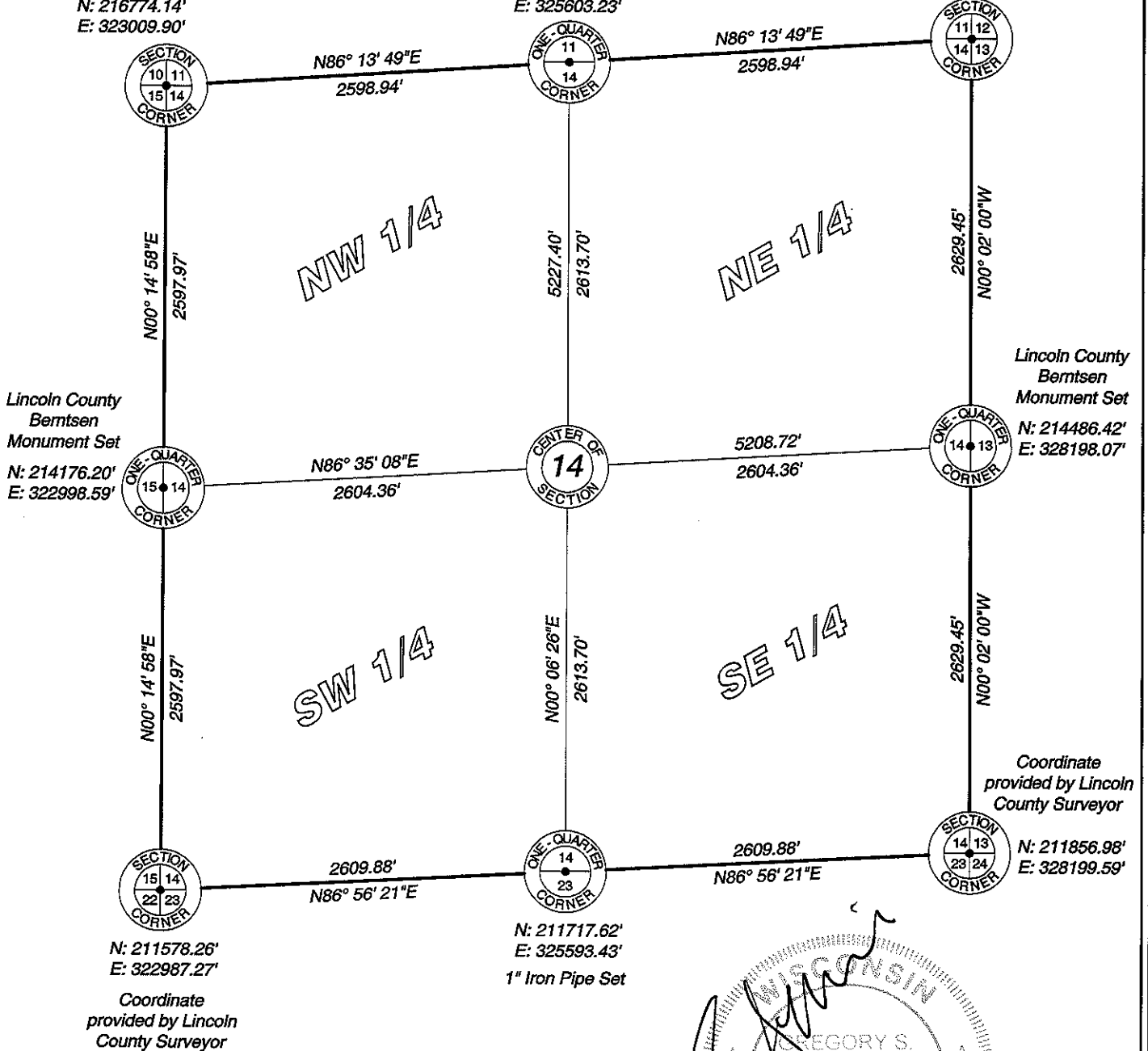
### Tomahawk Township

### Lincoln County, Wisconsin

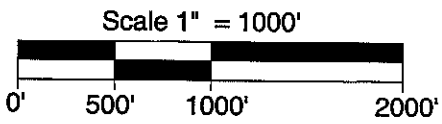
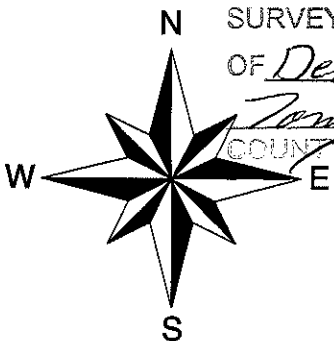
Lincoln County  
Bermtsen  
Monument Set  
N: 216774.14'  
E: 323009.90'

Lincoln County Bermtsen  
Monument Set  
N: 216945.01'  
E: 325603.23'

Coordinate  
provided by Lincoln  
County Surveyor  
N: 217115.87'  
E: 328196.55'



RECEIVED BY LINCOLN COUNTY  
SURVEYOR THIS 21<sup>ST</sup> DAY  
OF December 2012  
Tony Dahl  
COUNTY SURVEYOR



I hereby certify that the information shown hereon is true and correct to the best of my knowledge and belief.



5230 Highway 70 West  
Eagle River, WI 54521  
Phone 715.479.2570  
Fax 715.479.7274

mainesandassociates.com

Sec 14