





LINCOLN COUNTY SECTION SUMMARY

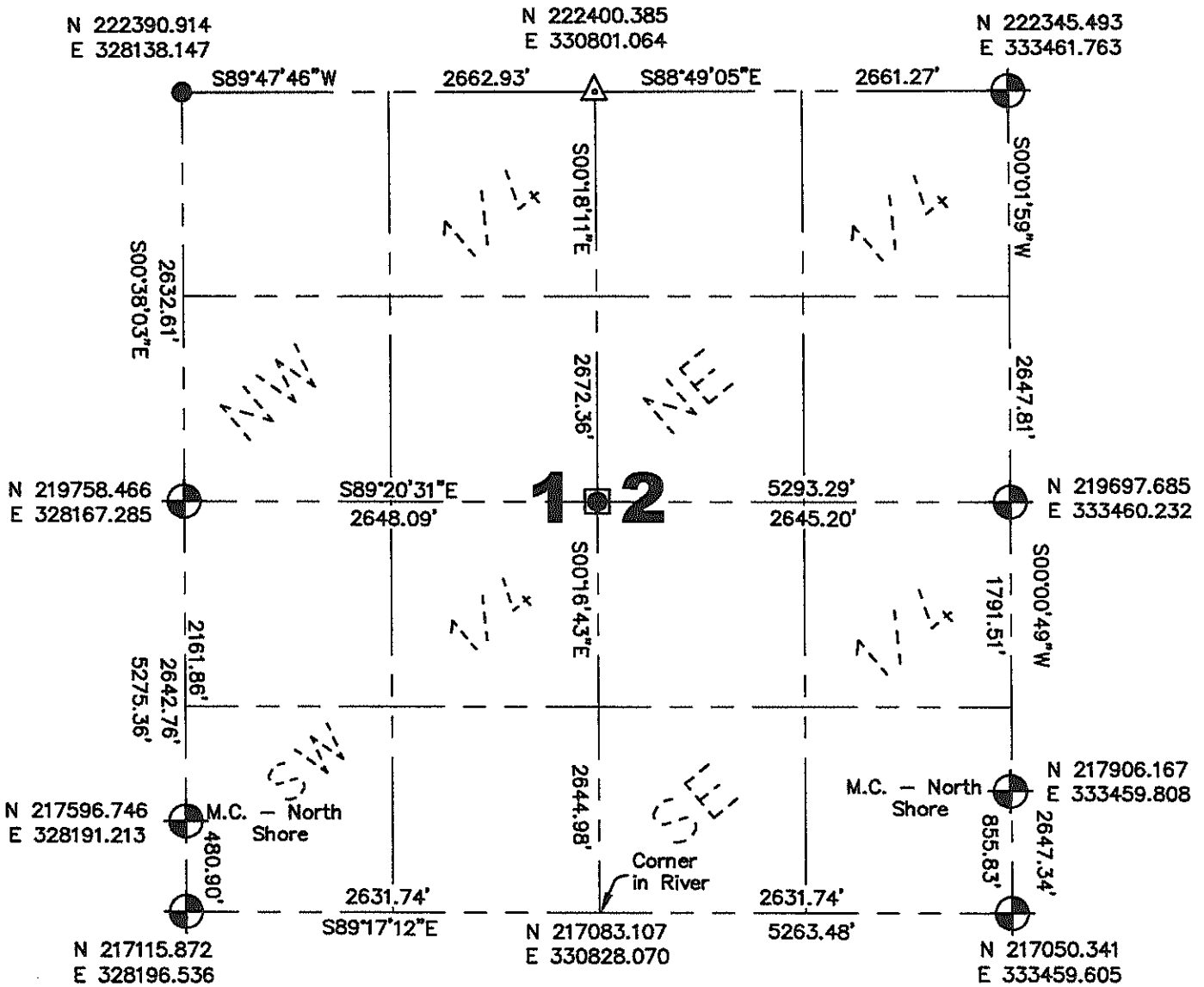
Legend

-  Set Lincoln County Berntsen Aluminum Monument
-  Set Railroad Spike
-  Found 1/2" Iron Rod
-  Found 1-1/4" Iron Pipe



Proj. 593

12 — **34N** — **4E**
 Section Township Range
Tomahawk
 Town

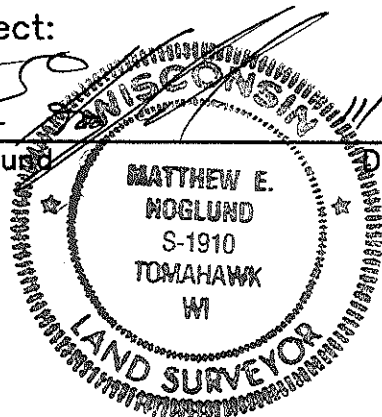


Coordinates and bearings are referenced to the Lincoln County Coordinate System as developed by the Wisconsin Department of Transportation and were determined by GPS observations on control points as supplied by Lincoln County Land Information Office or by manual survey methods, to the best of my knowledge and belief.

Certified Correct:

Matthew E. Hognlund

Date



RECEIVED BY LINCOLN COUNTY SURVEYOR THIS 4th DAY OF November 20 08
Tony Dahl
 COUNTY SURVEYOR

Sec. 12