

Lincoln County Section Summary

Section 7, T 34 N, R 4 E

Tomahawk Township

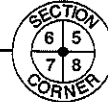
Lincoln County, Wisconsin

Coordinate provided by
Lincoln County Surveyor

N: 222432.20'
E: 301590.26'

Bermtsen Steel
Spike Set

N: 221955.45'
E: 304387.39'



N00° 09' 25" W
2633.78'

S80° 19' 38" E
2837.47'

NW 1/4

4807.21'
2242.06'

NE 1/4

Bermtsen Steel
Spike Set

N: 219798.43'
E: 301597.47'



S88° 13' 58" E
2733.37'



5262.88'
2529.51'

Coordinate
provided by
Lincoln County
Surveyor

N: 219636.14'
E: 306857.85'



N00° 10' 01" W
2628.15'

SW 1/4

N01° 28' 42" E
2565.15'

SE 1/4

N01° 54' 04" W
2387.76'

Coordinate
provided by
Lincoln County
Surveyor

N: 217249.69'
E: 306937.07'



S89° 33' 33" E
2658.32'



N87° 51' 41" E
2675.56'

N: 217170.29'
E: 301605.13'

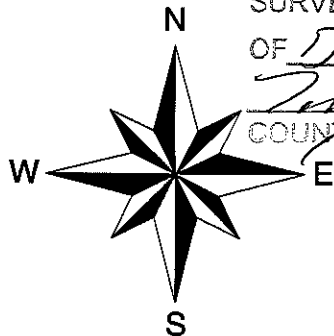
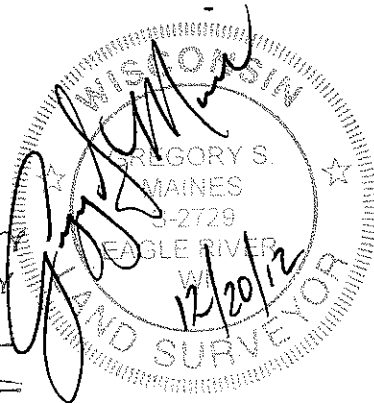
Lincoln County Bermtsen
Steel Spike Set

N: 217149.84'
E: 304263.37'

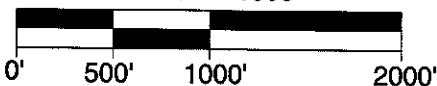
Lincoln County Bermtsen
Monument Set

Lincoln County Grid

RECEIVED BY LINCOLN COUNTY
SURVEYOR THIS 21ST DAY
OF December 20 12
Tom Dahl
COUNTY SURVEYOR



Scale 1" = 1000'



I hereby certify that the information shown hereon is true
and correct to the best of my knowledge and belief.



5230 Highway 70 West
Eagle River, WI 54521

Phone 715.479.2570
Fax 715.479.7274

mainesandassociates.com

Sec 7