

Lincoln County Section Summary

Section 2, T 34 N, R 4 E

Tomahawk Township

Lincoln County, Wisconsin

Coordinate provided by Lincoln County Surveyor

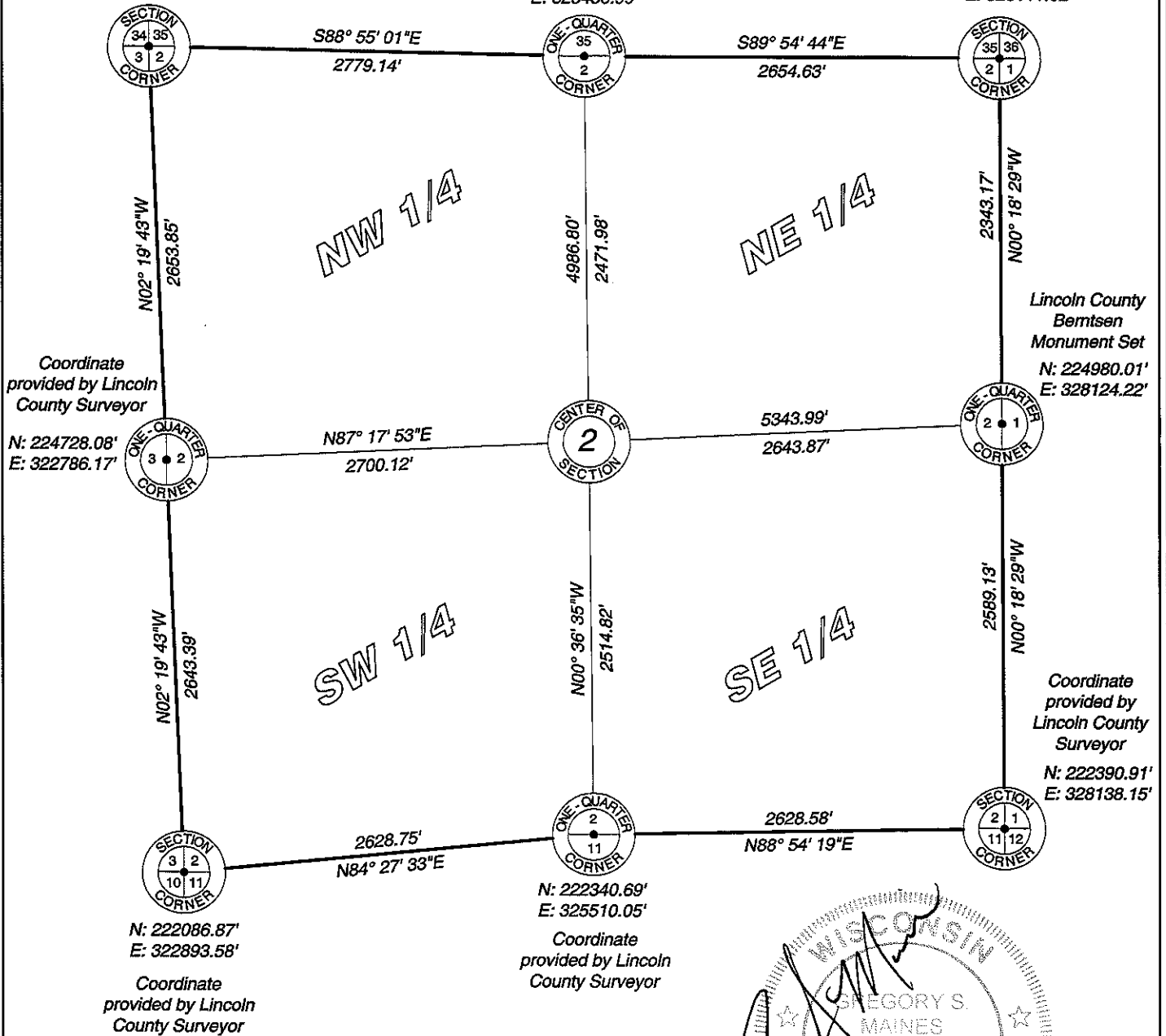
N: 227379.73'
E: 322678.34'

Lincoln County Berntsen Monument Set

N: 227327.21'
E: 325456.99'

Lincoln County Berntsen Monument Set

N: 227323.14'
E: 328111.62'



Coordinate provided by Lincoln County Surveyor

N: 224728.08'
E: 322786.17'

Lincoln County Berntsen Monument Set

N: 224980.01'
E: 328124.22'

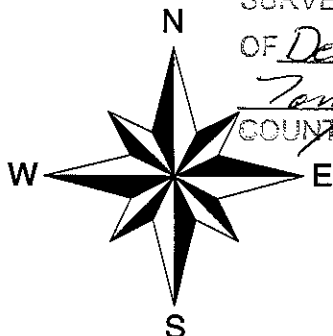
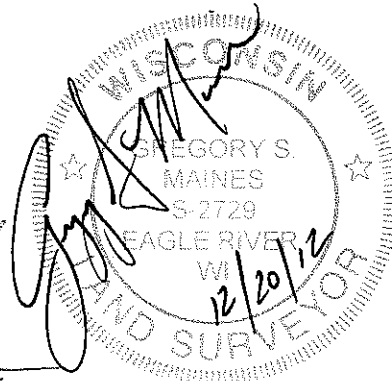
Coordinate provided by Lincoln County Surveyor

N: 222390.91'
E: 328138.15'

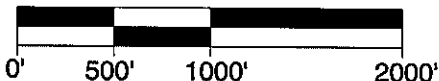
Coordinate provided by Lincoln County Surveyor

Lincoln County Grid

RECEIVED BY LINCOLN COUNTY SURVEYOR THIS 21ST DAY OF December 20 12
Tom Dahlen
 COUNTY SURVEYOR



Scale 1" = 1000'



I hereby certify that the information shown hereon is true and correct to the best of my knowledge and belief.



5230 Highway 70 West
Eagle River, WI 54521

Phone 715.479.2570
Fax 715.479.7274

mainesandassociates.com

Sec 2