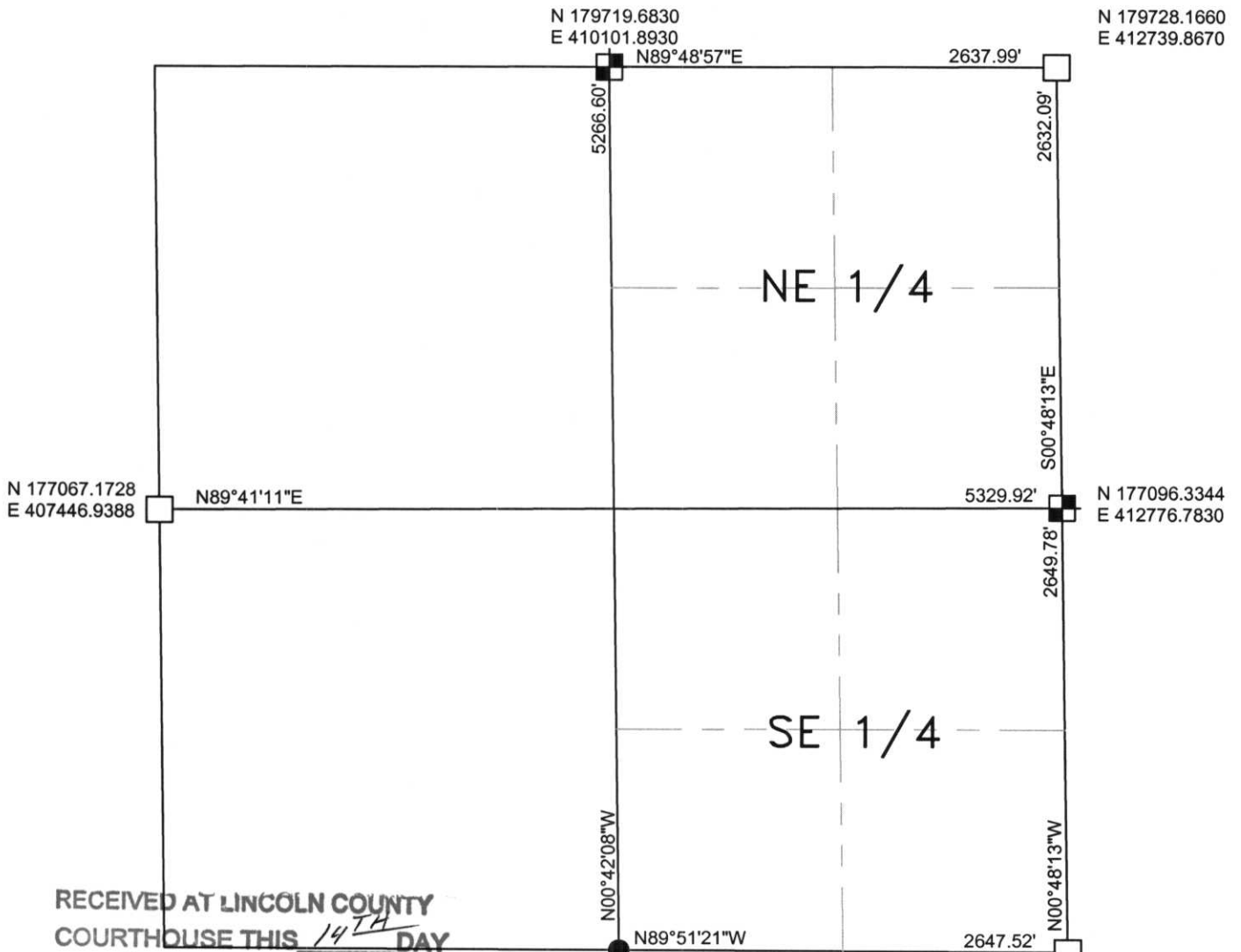




SECTION SUMMARY  
 21 - 33N - 7E  
 Section Township Range  
 BIRCH  
 Town



N 177067.1728  
 E 407446.9388

N89°41'11\"E

N 179719.6830  
 E 410101.8930  
 N89°48'57\"E

2637.99'

N 179728.1660  
 E 412739.8670

5266.60'

2632.09'

NE 1/4

S00°48'13\"E

5329.92'

N 177096.3344  
 E 412776.7830

2649.78'

SE 1/4

N00°42'08\"W

N00°48'13\"W

N89°51'21\"W

2647.52'

N 174453.4740  
 E 410166.4320

N 174446.8150  
 E 412813.9480

RECEIVED AT LINCOLN COUNTY  
 COURTHOUSE THIS 14<sup>TH</sup> DAY  
 OF October 20 02  
*Tommy Diller*  
 LAND INFORMATION OFFICE

NOTES:  
 COORDINATES AND BEARINGS ARE REFERENCED TO THE LINCOLN COUNTY  
 COORDINATE SYSTEM AS DEVELOPED BY THE WISCONSIN DEPARTMENT OF  
 TRANSPORTATION AND WERE DETERMINED BY GPS OBSERVATIONS ON CONTROL  
 POINTS AS SUPPLIED BY LINCOLN COUNTY.

**LEGEND**

- - FOUND 6" X 6" GRANITE STONE MONUMENT
- - FOUND 3/4" BAR
- - SET LINCOLN COUNTY BERNTSEN MONUMENT



CERTIFIED CORRECT:  
*Thomas A. Fadenz*  
 Registered Land Surveyor

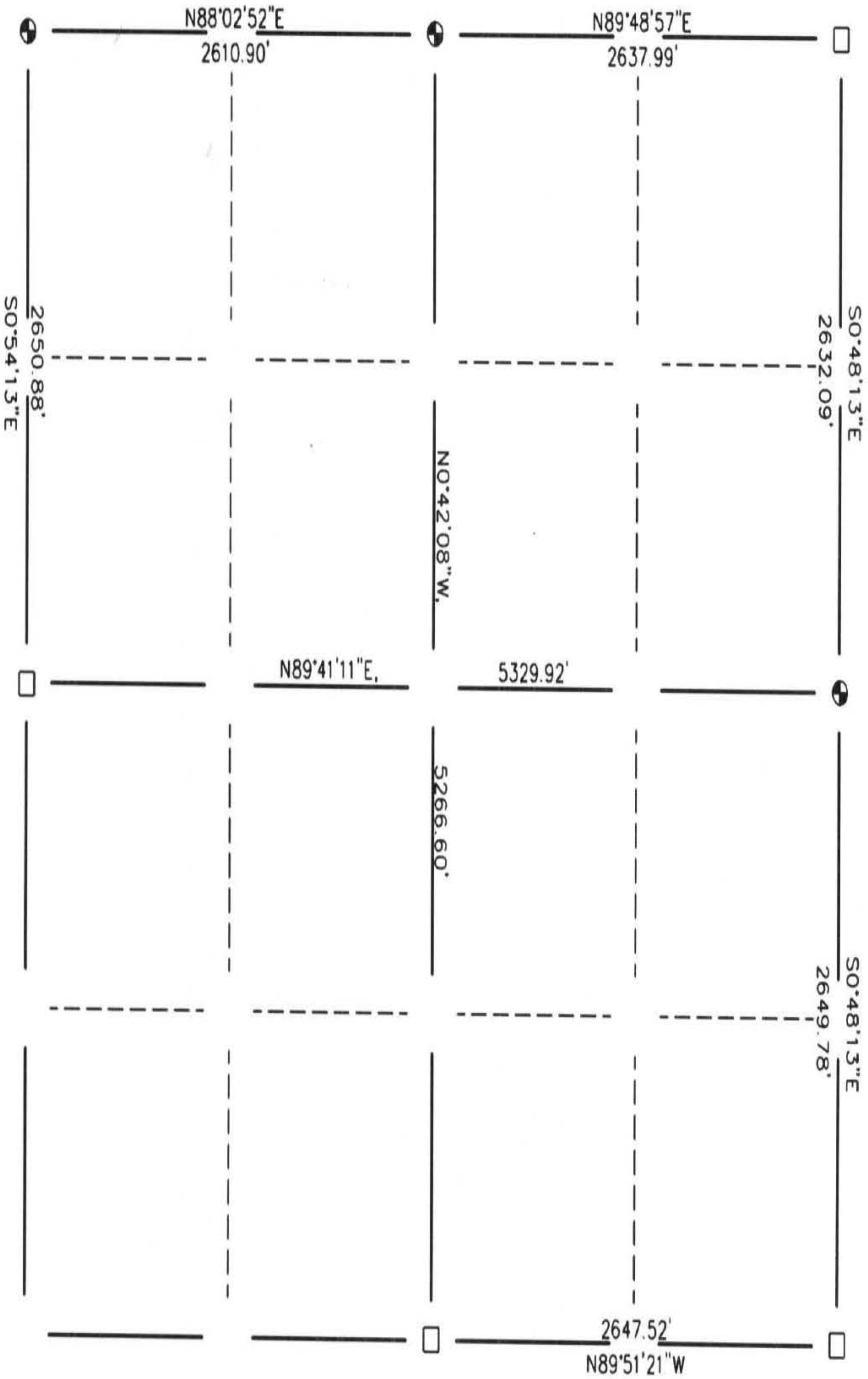
DATE: 10/7/02

R.E.I. 4080 N. 20th AVE WAUSAU, WI 54401 (715)675-9784

MQ: 9-13

Lincoln  
County  
Surveyor

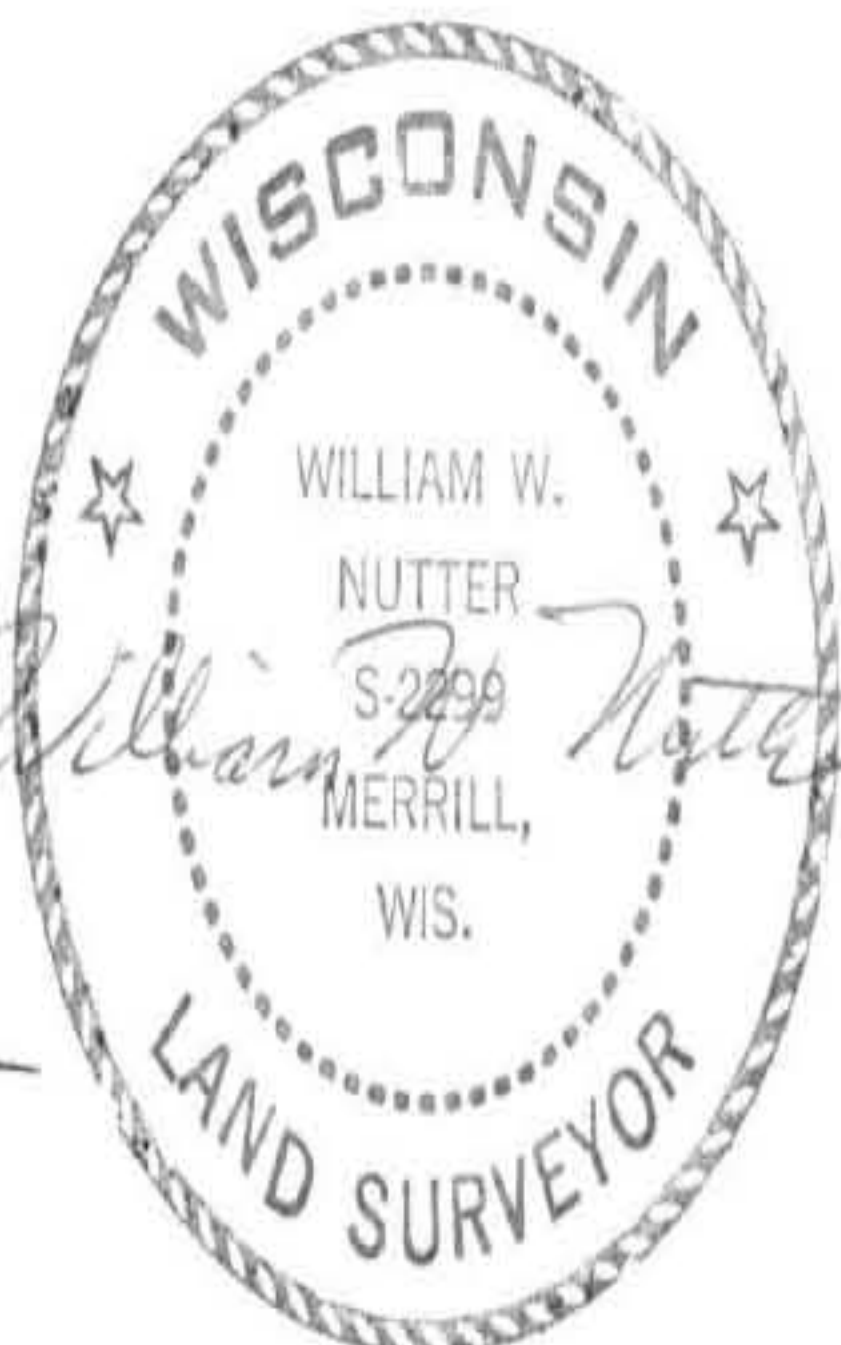
SECTION SUMMARY 21 — 33 — 7  
Section Township Range  
BIRCH  
Town



LEGEND

- ⊕ - Berntsen Monument
- - Stone (Red Granite)

RECEIVED AT LINCOLN COUNTY  
COURTHOUSE THIS 19TH DAY  
OF December 20 07  
Tony Dahl  
LAND INFORMATION OFFICE



CERTIFIED CORRECT:  
William W. Nutter, RLS  
William W. Nutter, RLS  
Registered Land Surveyor  
DATE: 12-19-2002

M-Q: 9-13