







LINCOLN COUNTY SECTION SUMMARY

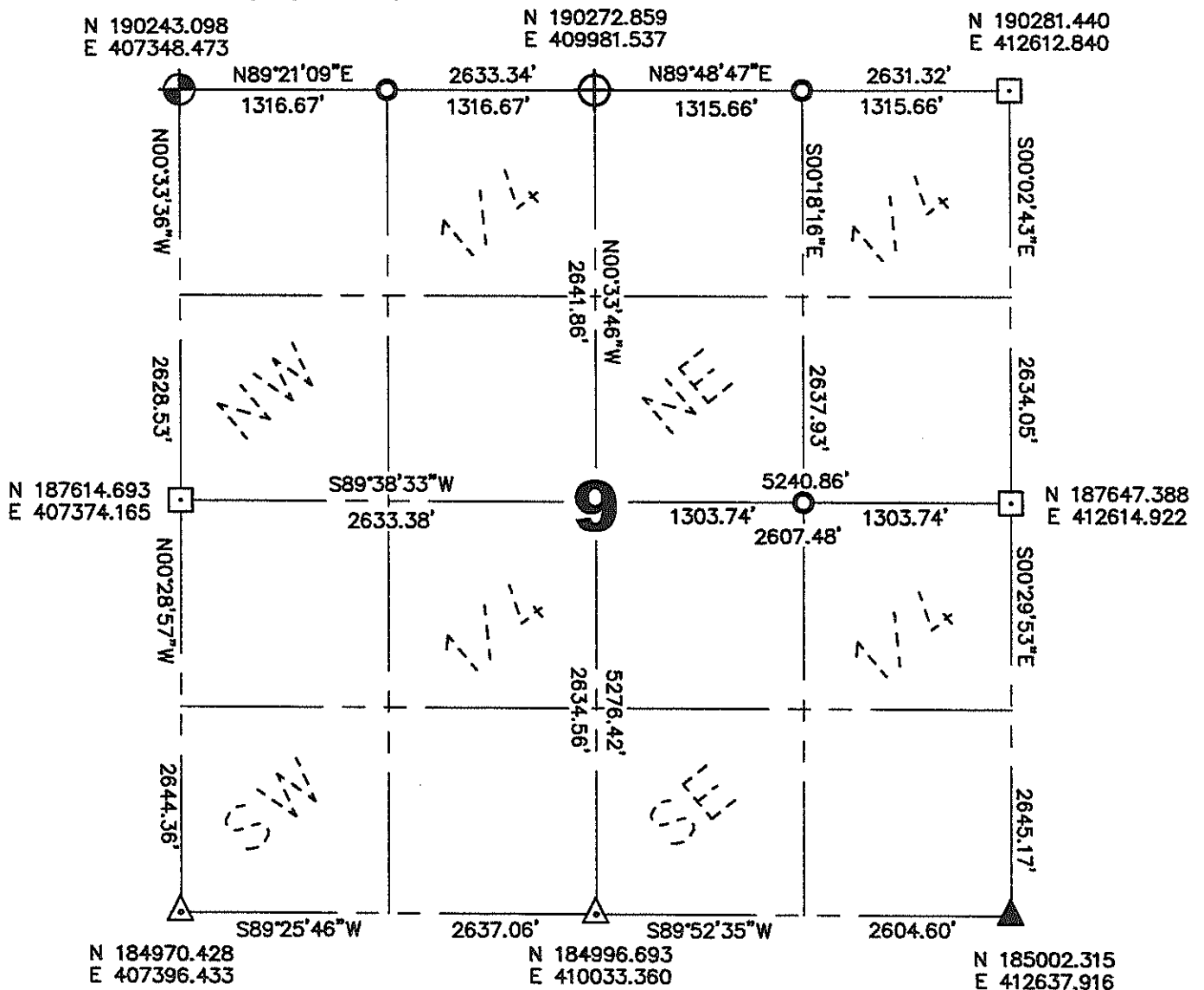
Legend

-  Survey Nail Found
Stamped "SURVEY MARK"
-  Survey Nail Set
Stamped "SURVEY MARK"
-  Lincoln County Bernsten Monument Found
-  Lincoln County Bernsten Monument Set
-  6" by 6" Granite Stone Found
-  3/4" Iron Rebar Found
Weighing 1.50 lbs/lin ft.

Section
Summary

9 — **33N** — **7E**
Section Township Range
Birch
Town

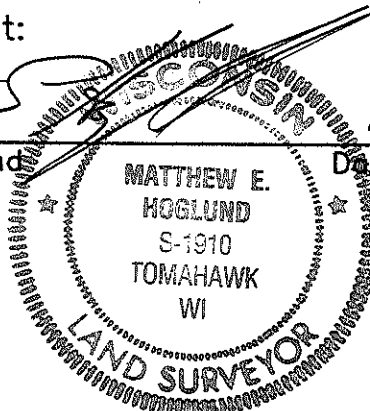
All Coordinates based on Irma
Hill Temp Point supplied by Lincoln
County Land Information Office
N 184924.8929
E 401398.0902
O.H. 1647.1054



Coordinates and bearings are referenced to the Lincoln County Coordinate System as developed by the Wisconsin Department of Transportation and were determined by GPS observations on control points as supplied by Lincoln County Land Information Office or by manual survey methods, to the best of my knowledge and belief.

Certified Correct:

Matthew E. Høglund



10/27/08
Date

RECEIVED BY LINCOLN COUNTY
SURVEYOR THIS 28TH DAY
OF October, 2008
Zany Outh
COUNTY SURVEYOR

Sec. 9