





LINCOLN COUNTY SECTION SUMMARY

Legend

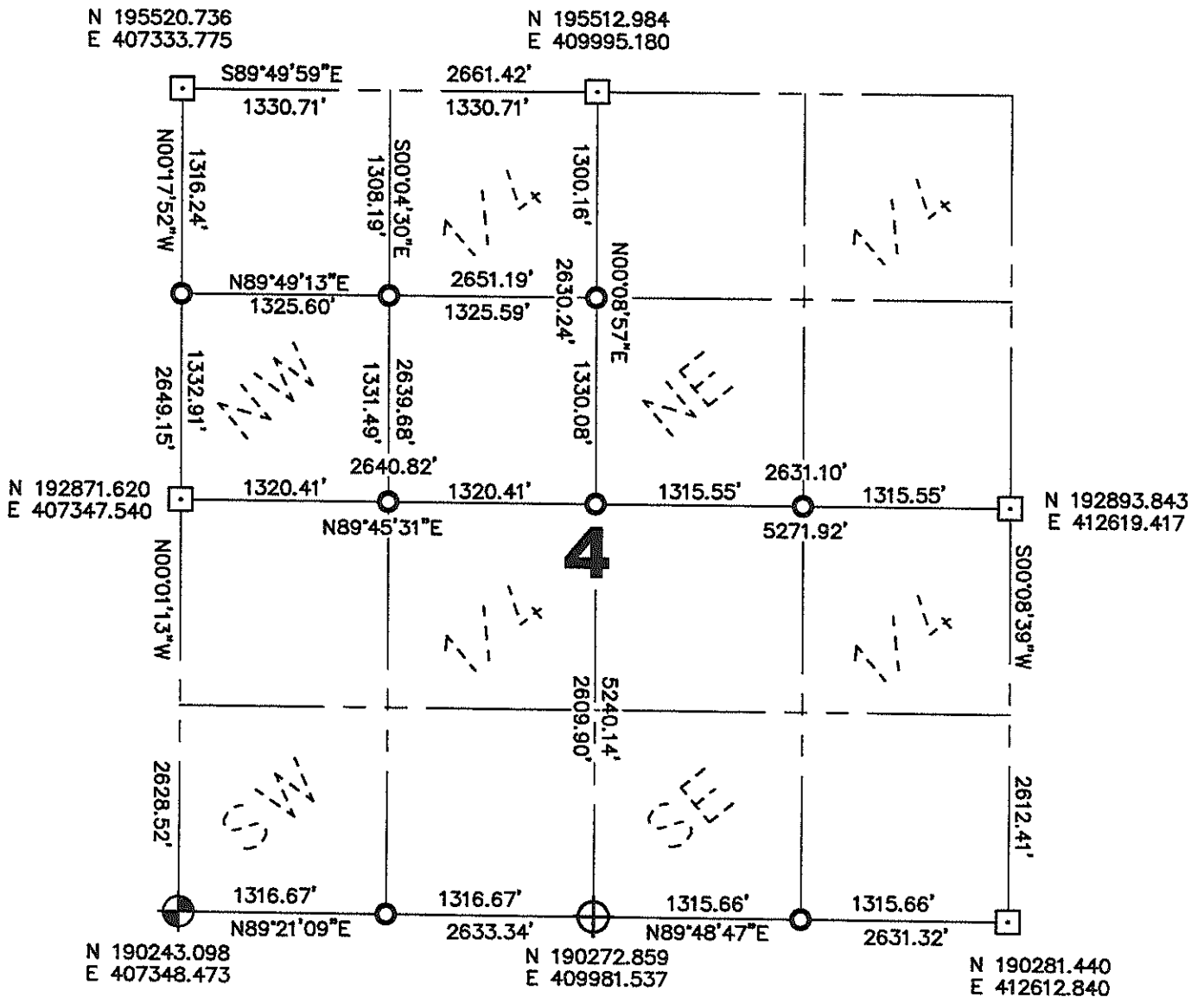
-  Lincoln County Bernsten Monument Found
-  Lincoln County Bernsten Monument Set
-  6" by 6" Granite Stone Found
-  3/4" x 24" Iron Rebar Set Weighing 1.50 lbs/lin ft.

Section Summary

4 — **33N** — **7E**
 Section Township Range
Birch
 Town



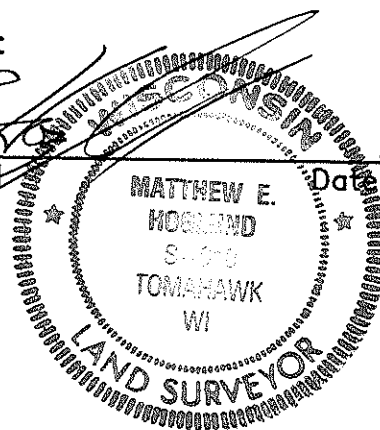
All Coordinates based on Irma Hill Temp Point supplied by Lincoln County Land Information Office
 N 184924.8929
 E 401398.0902
 O.H. 1647.1054



Coordinates and bearings are referenced to the Lincoln County Coordinate System as developed by the Wisconsin Department of Transportation and were determined by GPS observations on control points as supplied by Lincoln County Land Information Office or by manual survey methods, to the best of my knowledge and belief.

Certified Correct:

Matthew E. Hoglund



Date 10/27/08

RECEIVED BY LINCOLN COUNTY SURVEYOR THIS 28TH DAY OF October 20 08
 Tony Dahl
 COUNTY SURVEYOR

Sec. 4