

SECTION 2, T33N, R7E

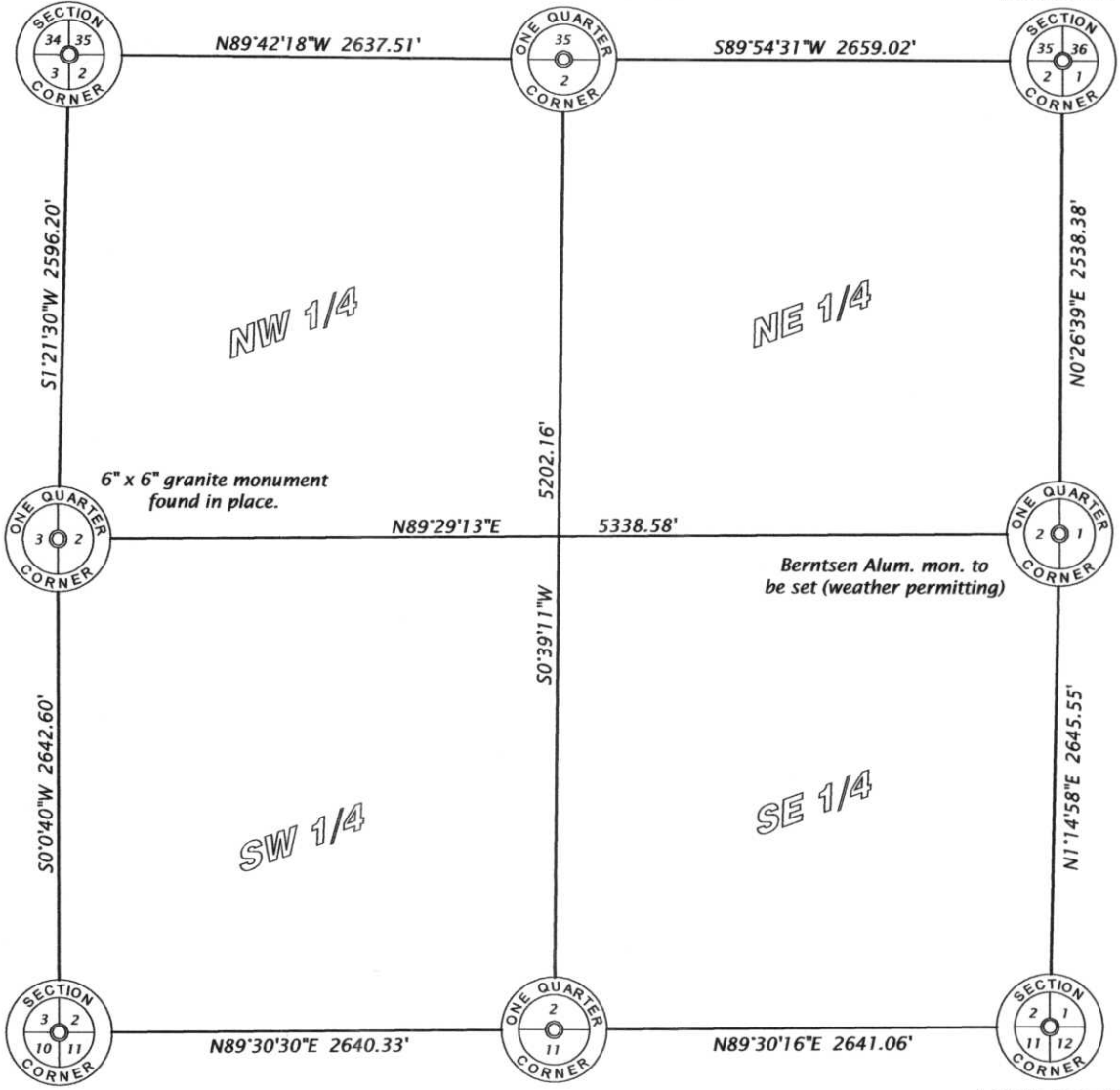
BIRCH TOWNSHIP

LINCOLN COUNTY, WISCONSIN

Berntsen Alum. Mon.
found in place.

Corner position based on
Lincoln County Coordinate System

Berntsen Alum. Mon.
found in place.



6" x 6" granite monument
found in place.

Berntsen Alum. mon. to
be set (weather permitting)

6" x 6" granite monument with
1.0" dia. iron rod found in place.

Berntsen Alum. Mon.
found in place.

1.9" dia. iron pipe
found in place.

RECEIVED BY LINCOLN COUNTY
SURVEYOR THIS 6TH DAY
OF February 20 07
Tom Ball
COUNTY SURVEYOR

Bearing Lincoln County Grid,
based on GPS survey and
referenced to the north line
of the NE 1/4, bearing
S89°54'31"W



Scale 1" = 1000'

Corner monuments are as noted.

E 1/4 corner to be set in spring of 2007.



Note:

See Map No. 07-02 by Oestreich Surveying
& Mapping, LLC, dated 2/02/07 for
additional survey data.