

Lincoln County Section Summary

Section 13, T 33 N, R 5 E Harding Township Lincoln County, Wisconsin

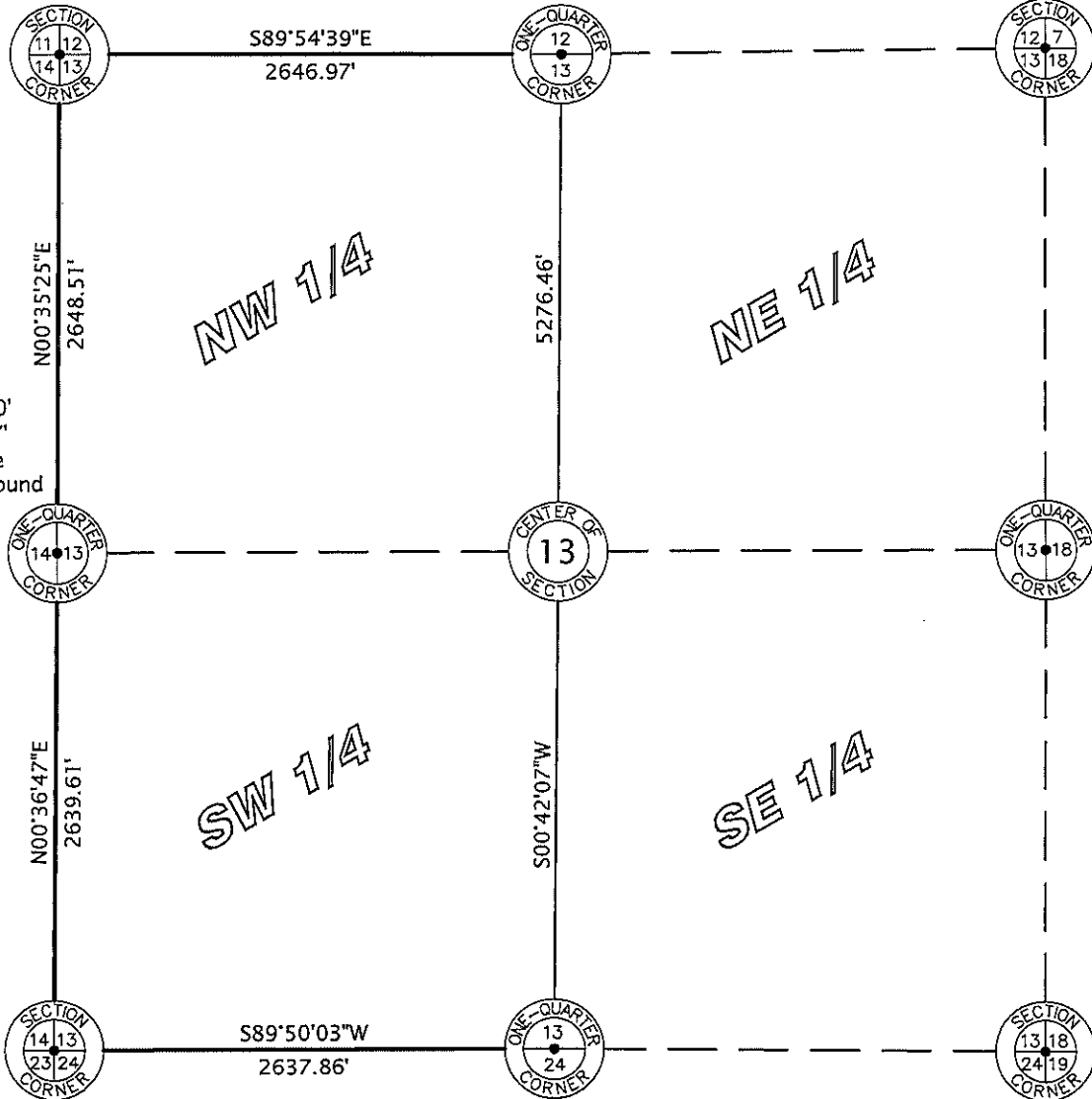
N: 185136.57'
E: 359655.17'
6" sq. granite
monument found

N: 185132.44'
E: 362302.13'
6" sq. granite
monument found

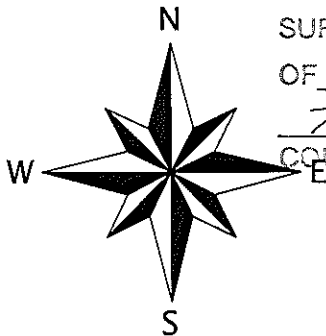
N: 182488.20'
E: 359627.87'
6" sq. granite
monument found

N: 179848.74'
E: 359599.63'
6" sq. granite
monument found

N: 179856.38'
E: 362237.49'
6" sq. granite
monument found



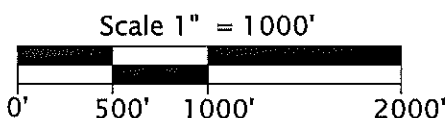
Lincoln County Grid



RECEIVED BY LINCOLN COUNTY
SURVEYOR THIS 15TH DAY
OF February 20 10
Tom Dahl
COUNTY SURVEYOR



I hereby certify that the information shown hereon is true and correct to the best of my knowledge and belief.



**Favorite, Anderson & Maines
Surveying, S.C.**

5230 HWY 70 WEST - EAGLE RIVER, WI 54521
PHONE: (715) 479-2570 - FAX: (715) 479-7274

Sec. 13